

## Product datasheet for **TA371229S**

### NRG2 Rabbit Polyclonal Antibody

#### Product data:

Product Type:	Primary Antibodies
Applications:	IHC
Recommended Dilution:	IHC: 50-300 Positive control: Human thyroid cancer Predicted cell location: Secreted
Reactivity:	Human, Mouse, Rat
Host:	Rabbit
Isotype:	IgG
Clonality:	Polyclonal
Immunogen:	Synthetic peptide of human NRG2
Formulation:	pH7.4 PBS, 0.05% NaN <sub>3</sub> , 40% Glycerol
Concentration:	lot specific
Purification:	Antigen affinity purification
Conjugation:	Unconjugated
Storage:	Store at -20°C.
Stability:	1 year
Gene Name:	neuregulin 2
Database Link:	<a href="#">Entrez Gene 9542 Human Q14511</a>

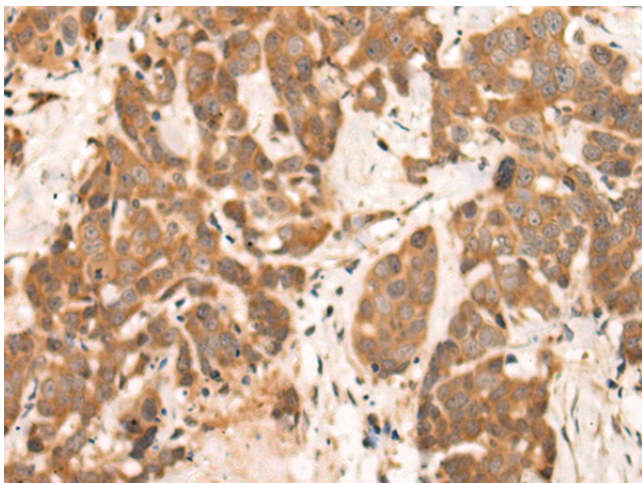
**Background:** This gene encodes a novel member of the neuregulin family of growth and differentiation factors. Through interaction with the ERBB family of receptors, this protein induces the growth and differentiation of epithelial, neuronal, glial, and other types of cells. The gene consists of 12 exons and the genomic structure is similar to that of neuregulin 1, another member of the neuregulin family of ligands. The products of these genes mediate distinct biological processes by acting at different sites in tissues and eliciting different biological responses in cells. This gene is located close to the region for demyelinating Charcot-Marie-Tooth disease locus, but is not responsible for this disease. Alternative transcript variants encoding distinct isoforms have been described.



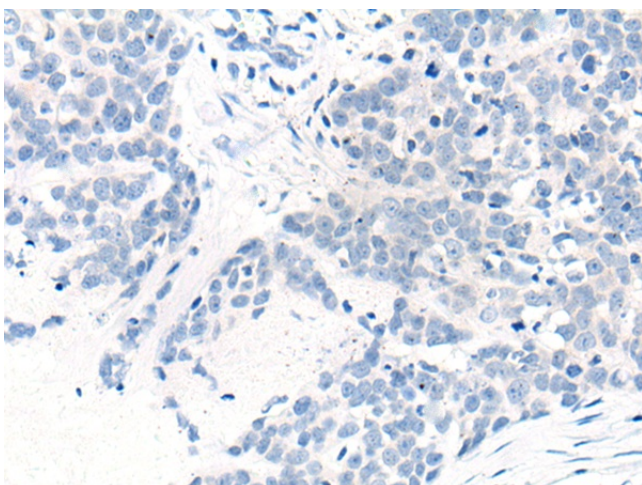
[View online »](#)

Synonyms: Don-1; HRG2; NTAk; Pro-NRG2

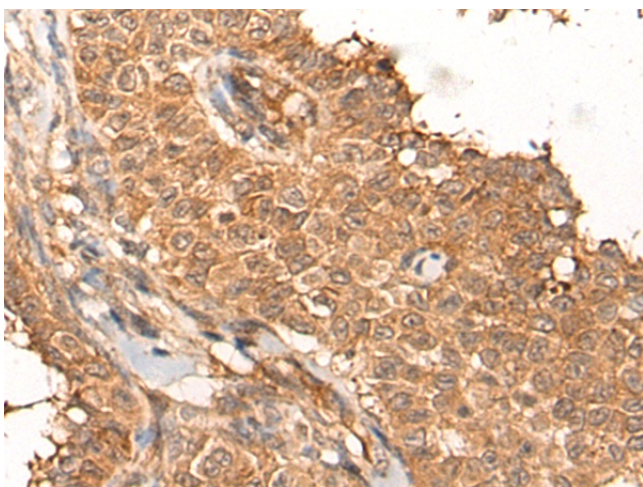
### Product images:



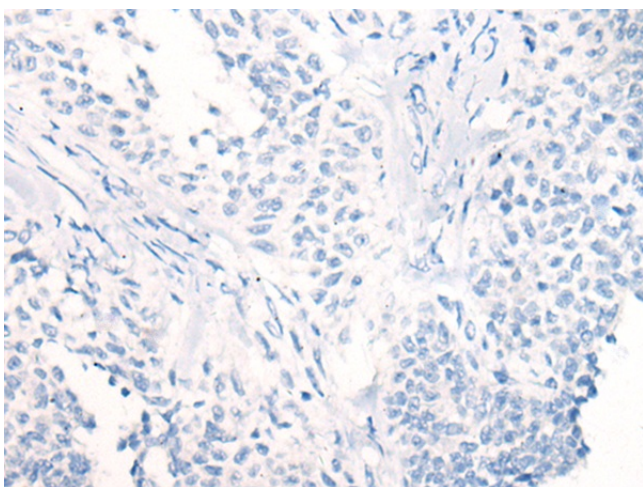
Immunohistochemistry of paraffin-embedded Human thyroid cancer tissue using [TA371229] (NRG2 Antibody) at dilution 1/65 (Original magnification: x200)



Immunohistochemistry of paraffin-embedded Human thyroid cancer tissue using [TA371229] (NRG2 Antibody) at dilution 1/65, treated with synthetic peptide. (Original magnification: x200)



Immunohistochemistry of paraffin-embedded Human ovarian cancer tissue using [TA371229] (NRG2 Antibody) at dilution 1/65 (Original magnification:  $\times 200$ )



Immunohistochemistry of paraffin-embedded Human ovarian cancer tissue using [TA371229] (NRG2 Antibody) at dilution 1/65, treated with synthetic peptide. (Original magnification:  $\times 200$ )