

## Product datasheet for **TA371223S**

### CD44 Rabbit Polyclonal Antibody

#### Product data:

Product Type:	Primary Antibodies
Applications:	IHC
Recommended Dilution:	IHC: 50-100 Positive control: Human gastric cancer Predicted cell location: Cell membrane
Reactivity:	Human, Mouse, Rat
Host:	Rabbit
Isotype:	IgG
Clonality:	Polyclonal
Immunogen:	Synthetic peptide of human CD44
Formulation:	pH7.4 PBS, 0.05% NaN <sub>3</sub> , 40% Glycerol
Concentration:	lot specific
Purification:	Antigen affinity purification
Conjugation:	Unconjugated
Storage:	Store at -20°C.
Stability:	1 year
Gene Name:	CD44 molecule (Indian blood group)
Database Link:	<a href="#">Entrez Gene 960 Human P16070</a>

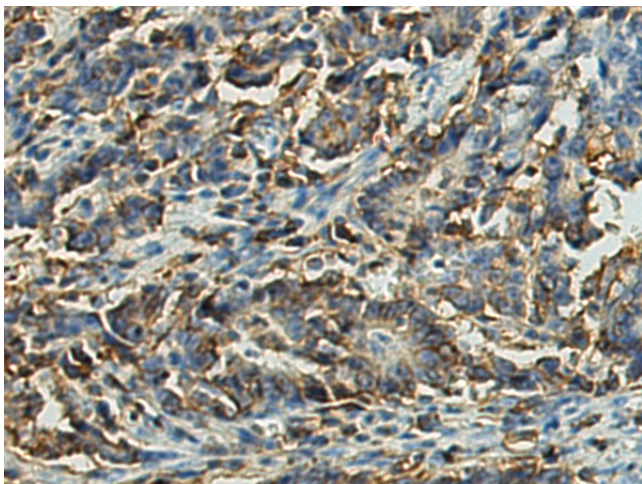
**Background:** The protein encoded by this gene is a cell-surface glycoprotein involved in cell-cell interactions, cell adhesion and migration. It is a receptor for hyaluronic acid (HA) and can also interact with other ligands, such as osteopontin, collagens, and matrix metalloproteinases (MMPs). This protein participates in a wide variety of cellular functions including lymphocyte activation, recirculation and homing, hematopoiesis, and tumor metastasis. Transcripts for this gene undergo complex alternative splicing that results in many functionally distinct isoforms, however, the full length nature of some of these variants has not been determined. Alternative splicing is the basis for the structural and functional diversity of this protein, and may be related to tumor metastasis.



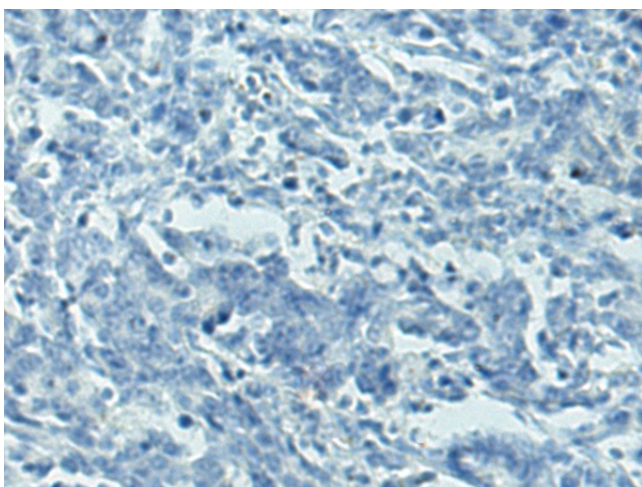
[View online »](#)

**Synonyms:** CD44R; CDW44; CSPG8; ECMR-III; Epican; HCELL; HUTCH-I; IN; LHR; MC56; MDU2; MDU3; MGC10468; MIC4; MUTCH-I; PGP-1; PGP-I; Pgp1

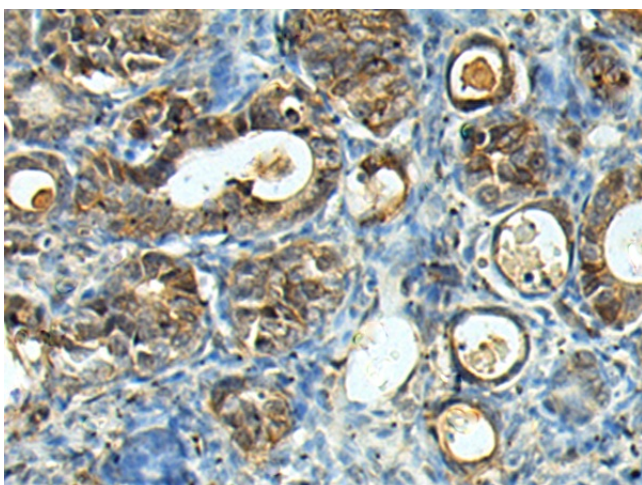
**Product images:**



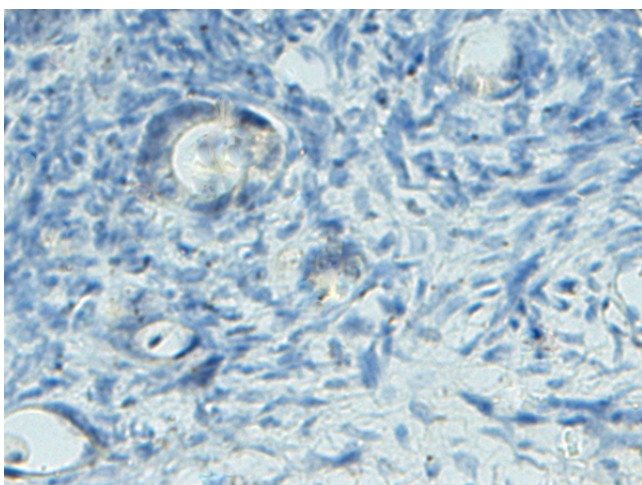
Immunohistochemistry of paraffin-embedded Human gastric cancer using [TA371223] (CD44 Antibody) at dilution 1/45 (Original magnification: ×200)



Immunohistochemistry of paraffin-embedded Human gastric cancer using [TA371223] (CD44 Antibody) at dilution 1/45, treated with synthetic peptide. (Original magnification: ×200)



Immunohistochemistry of paraffin-embedded Human ovarian cancer using [TA371223] (CD44 Antibody) at dilution 1/45 (Original magnification: x200)



Immunohistochemistry of paraffin-embedded Human ovarian cancer using [TA371223] (CD44 Antibody) at dilution 1/45, treated with synthetic peptide. (Original magnification: x200)