

## Product datasheet for **TA371220S**

### Rex1 (ZFP42) Rabbit Polyclonal Antibody

#### Product data:

Product Type:	Primary Antibodies
Applications:	WB
Recommended Dilution:	WB: 200-1000 WB positive control: A549, K562 and PC3 cells
Reactivity:	Human
Host:	Rabbit
Isotype:	IgG
Clonality:	Polyclonal
Immunogen:	Synthetic peptide of human ZFP42
Formulation:	pH7.4 PBS, 0.05% NaN <sub>3</sub> , 40% Glycerol
Concentration:	lot specific
Purification:	Antigen affinity purification
Conjugation:	Unconjugated
Storage:	Store at -20°C.
Stability:	1 year
Predicted Protein Size:	35 kDa
Gene Name:	ZFP42 zinc finger protein
Database Link:	<a href="#">Entrez Gene 132625 Human Q96MM3</a>

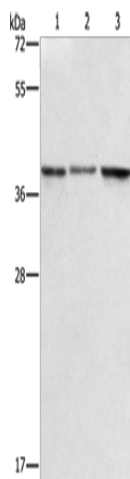
**Background:** Rex-1 (for reduced expression), also designated zinc finger protein 42 (ZFP42), is an acidic zinc finger protein. Rex-1 contains four repeats of the zinc finger nucleic acid-binding motif and a potential acidic activator domain, suggesting that it is a regulatory protein. Rex-1 localizes to the nucleus and is highly expressed in embryonic stem (ES) and undifferentiated murine F9 teratocarcinoma cells. At the transcriptional level, expression of Rex-1 is reduced when F9 cells are induced to differentiate by the addition of retinoic acid (RA), and Rex-1 repression is enhanced by E1A. The Oct-3/4 transcription factor can either activate or repress the Rex-1 promoter, depending on the cellular environment, while Oct-6 can lower the expression of Rex-1.



[View online »](#)

Synonyms: hREX-1; REX-1; REX1; Zfp-42; ZNF754

### Product images:



Gel: 12%SDS-PAGE  
Lysate: 40  $\mu$ g  
Lane 1-3: A549 cells  
K562 cells  
PC3 cells  
Primary antibody: [TA371220] (ZFP42 Antibody) at dilution 1/500  
Secondary antibody: Goat anti rabbit IgG at 1/8000 dilution  
Exposure time: 30 seconds