

## Product datasheet for **TA371214**

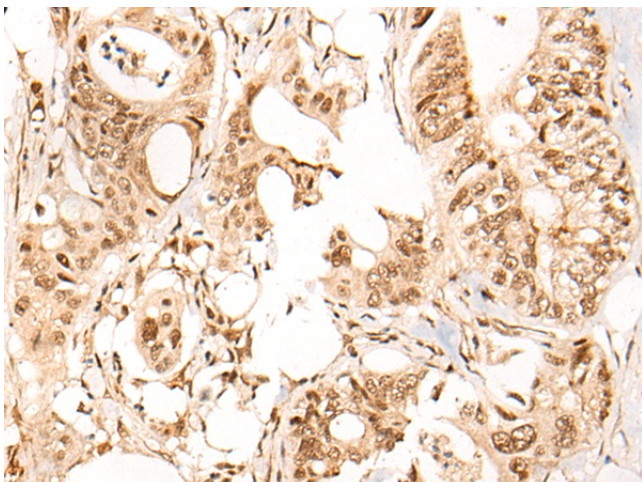
### ARID1B Rabbit Polyclonal Antibody

#### Product data:

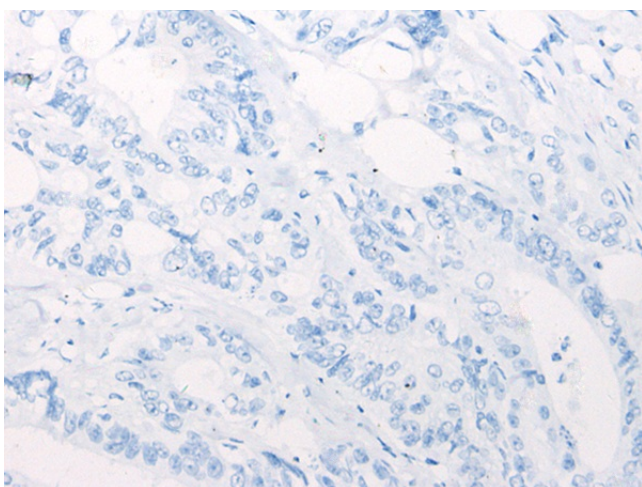
Product Type:	Primary Antibodies
Applications:	IHC
Recommended Dilution:	IHC: 30-150 Positive control: Human colorectal cancer Predicted cell location: Nucleus and Cytoplasm
Reactivity:	Human
Host:	Rabbit
Isotype:	IgG
Clonality:	Polyclonal
Immunogen:	Synthetic peptide of human ARID1B
Formulation:	pH7.4 PBS, 0.05% NaN <sub>3</sub> , 40% Glycerol
Concentration:	lot specific
Purification:	Antigen affinity purification
Conjugation:	Unconjugated
Storage:	Store at -20°C.
Stability:	1 year
Gene Name:	AT-rich interaction domain 1B
Database Link:	<a href="#">Entrez Gene 57492 Human Q8NFD5</a>
Background:	This locus encodes an AT-rich DNA interacting domain-containing protein. The encoded protein is a component of the SWI/SNF chromatin remodeling complex and may play a role in cell-cycle activation. The protein encoded by this locus is similar to AT-rich interactive domain-containing protein 1A. These two proteins function as alternative, mutually exclusive ARID-subunits of the SWI/SNF complex. The associated complexes play opposing roles. Alternatively spliced transcript variants encoding different isoforms have been described.
Synonyms:	6A3-5; BAF250b; BRIGHT; DAN15; ELD/OSA1; hOsa2; KIAA1235; OSA2; p250R



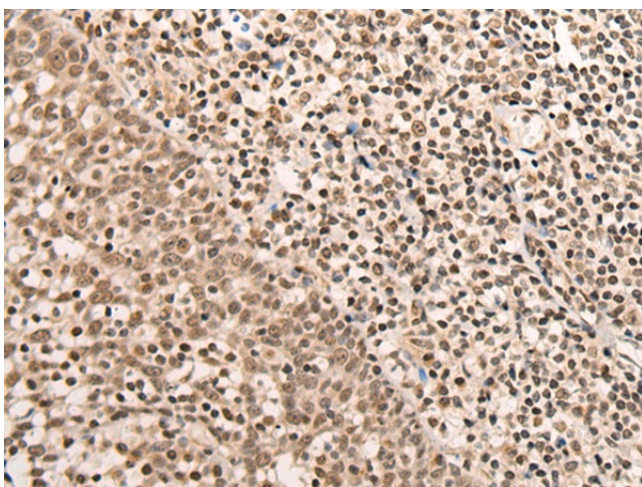
[View online »](#)

**Product images:**

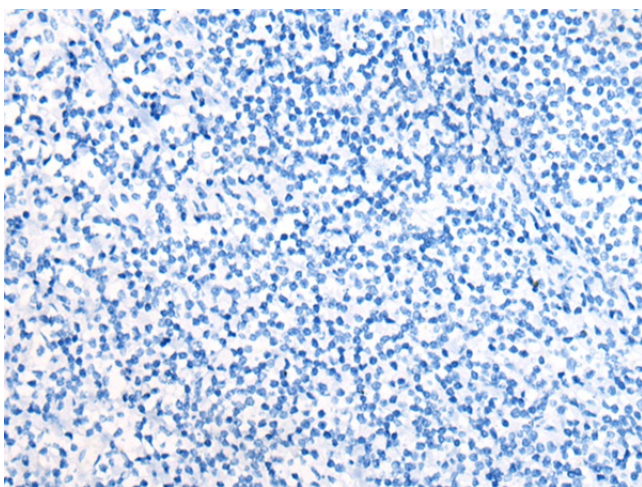
Immunohistochemistry of paraffin-embedded Human colorectal cancer tissue using TA371214 (ARID1B Antibody) at dilution 1/40 (Original magnification:  $\times 200$ )



Immunohistochemistry of paraffin-embedded Human colorectal cancer tissue using TA371214 (ARID1B Antibody) at dilution 1/40, treated with synthetic peptide. (Original magnification:  $\times 200$ )



Immunohistochemistry of paraffin-embedded Human tonsil tissue using TA371214 (ARID1B Antibody) at dilution 1/40 (Original magnification: ×200)



Immunohistochemistry of paraffin-embedded Human tonsil tissue using TA371214 (ARID1B Antibody) at dilution 1/40, treated with synthetic peptide. (Original magnification: ×200)