

## Product datasheet for **TA371211S**

### **APOBEC2 Rabbit Polyclonal Antibody**

#### **Product data:**

Product Type:	Primary Antibodies
Applications:	WB
Recommended Dilution:	WB: 200-1000 WB positive control: Mouse muscle and skin tissue
Reactivity:	Human, Mouse
Host:	Rabbit
Isotype:	IgG
Clonality:	Polyclonal
Immunogen:	Synthetic peptide of human APOBEC2
Formulation:	pH7.4 PBS, 0.05% NaN <sub>3</sub> , 40% Glycerol
Concentration:	lot specific
Purification:	Antigen affinity purification
Conjugation:	Unconjugated
Storage:	Store at -20°C.
Stability:	1 year
Predicted Protein Size:	26 kDa
Gene Name:	apolipoprotein B mRNA editing enzyme catalytic subunit 2
Database Link:	<a href="#">Entrez Gene 10930 Human Q9Y235</a>

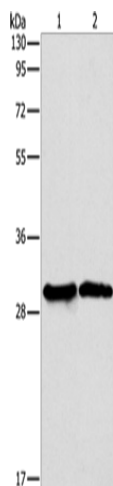
**Background:** Apolipoprotein B mRNA editing enzyme, catalytic polypeptide-like 2 (APOBEC2) is a 224 amino acid protein that belongs to the cytidine and deoxycytidylate deaminase family. Expressed exclusively in heart and skeletal muscle, APOBEC2 is thought to be a probable C (cytidine) to U (uridine) editing enzyme. However, unlike other members of the family, such as APOBEC1, which mediates the editing of apolipoprotein (apo) B mRNA, APOBEC2 does not display any detectable apoB mRNA editing activity. Also, APOBEC2 has been shown to have low, but definite, intrinsic cytidine deaminase activity.

**Synonyms:** ARCD1; ARP1



[View online »](#)

## Product images:



Gel: 10%SDS-PAGE  
Lysate: 40  $\mu$ g  
Lane 1-2: Mouse muscle tissue  
Mouse skin tissue  
Primary antibody: [TA371211] (APOBEC2  
Antibody) at dilution 1/266.6  
Secondary antibody: Goat anti rabbit IgG at  
1/8000 dilution  
Exposure time: 20 seconds