

## Product datasheet for **TA371210**

### Apolipoprotein L 2 (APOL2) Rabbit Polyclonal Antibody

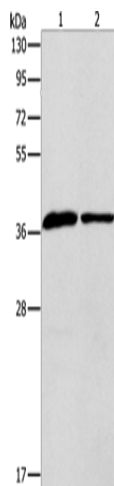
#### Product data:

Product Type:	Primary Antibodies
Applications:	IHC, WB
Recommended Dilution:	WB: 500-2000 WB positive control: Human fetal liver tissue and huvec cells IHC: 100-300 Positive control: Human cervical cancer Predicted cell location: Cytoplasm
Reactivity:	Human
Host:	Rabbit
Isotype:	IgG
Clonality:	Polyclonal
Immunogen:	Synthetic peptide of human APOL2
Formulation:	pH7.4 PBS, 0.05% NaN <sub>3</sub> , 40% Glycerol
Concentration:	lot specific
Purification:	Antigen affinity purification
Conjugation:	Unconjugated
Storage:	Store at -20°C.
Stability:	1 year
Predicted Protein Size:	37 kDa
Gene Name:	apolipoprotein L2
Database Link:	<a href="#">Entrez Gene 23780 Human Q9BQE5</a>
Background:	This gene is a member of the apolipoprotein L gene family. The encoded protein is found in the cytoplasm, where it may affect the movement of lipids or allow the binding of lipids to organelles. Two transcript variants encoding the same protein have been found for this gene.
Synonyms:	APOL-II; APOL3



[View online »](#)

## Product images:



Gel: 10%SDS-PAGE

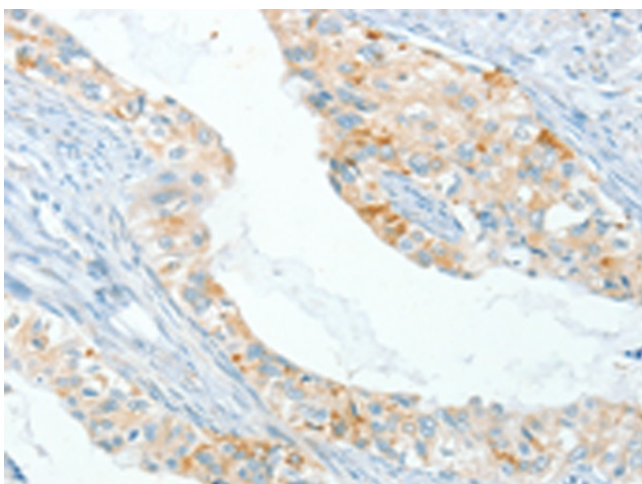
Lysate: 40  $\mu$ g

Lane 1-2: Human fetal liver tissue  
huvec cells

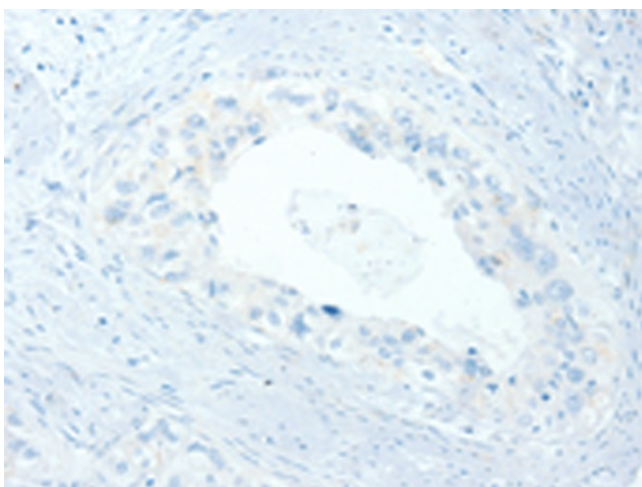
Primary antibody: TA371210 (APOL2 Antibody) at  
dilution 1/725

Secondary antibody: Goat anti rabbit IgG at  
1/8000 dilution

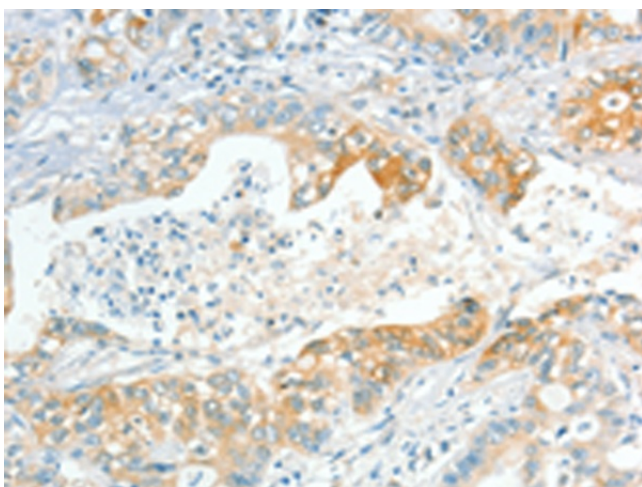
Exposure time: 40 seconds



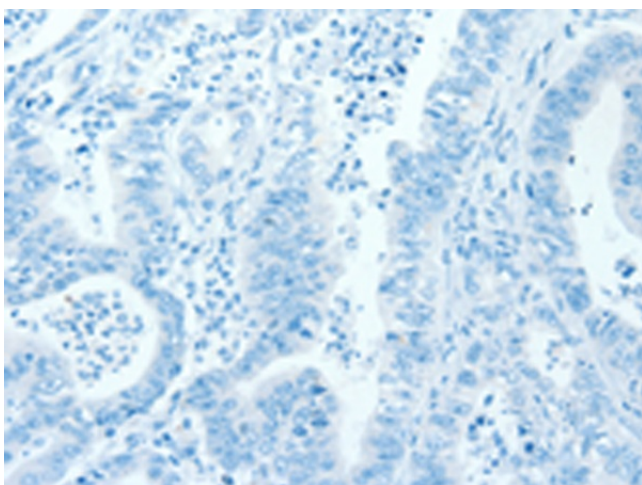
Immunohistochemistry of paraffin-embedded  
Human cervical cancer tissue using TA371210  
(APOL2 Antibody) at dilution 1/80 (Original  
magnification:  $\times 200$ )



Immunohistochemistry of paraffin-embedded Human cervical cancer tissue using TA371210 (APOL2 Antibody) at dilution 1/80, treated with synthetic peptide. (Original magnification:  $\times 200$ )



Immunohistochemistry of paraffin-embedded Human gastric cancer tissue using TA371210 (APOL2 Antibody) at dilution 1/80 (Original magnification:  $\times 200$ )



Immunohistochemistry of paraffin-embedded Human gastric cancer tissue using TA371210 (APOL2 Antibody) at dilution 1/80, treated with synthetic peptide. (Original magnification:  $\times 200$ )