

Product datasheet for **TA371208**

Angiotensin Converting Enzyme 1 (ACE) Rabbit Polyclonal Antibody

Product data:

Product Type:	Primary Antibodies
Applications:	IHC, WB
Recommended Dilution:	WB: 200-1000 WB positive control: Human ileum adenocarcinoma tissue, Human testis and prostate tissue IHC: 100-300 Positive control: Human breast cancer Predicted cell location: Cytoplasm
Reactivity:	Human, Mouse, Rat
Host:	Rabbit
Isotype:	IgG
Clonality:	Polyclonal
Immunogen:	Synthetic peptide of human ACE
Formulation:	pH7.4 PBS, 0.05% NaN ₃ , 40% Glycerol
Concentration:	lot specific
Purification:	Antigen affinity purification
Conjugation:	Unconjugated
Storage:	Store at -20°C.
Stability:	1 year
Predicted Protein Size:	150 kDa
Gene Name:	angiotensin I converting enzyme
Database Link:	Entrez Gene 1636 Human P12821



[View online »](#)

Background:

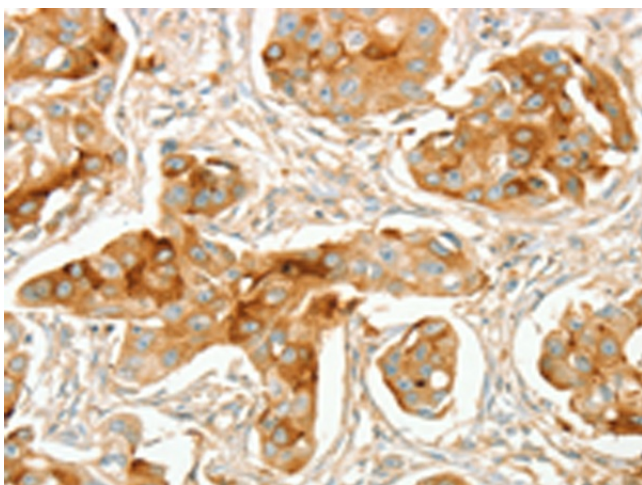
This gene encodes an enzyme involved in catalyzing the conversion of angiotensin I into a physiologically active peptide angiotensin II. Angiotensin II is a potent vasopressor and aldosterone-stimulating peptide that controls blood pressure and fluid-electrolyte balance. This enzyme plays a key role in the renin-angiotensin system. Many studies have associated the presence or absence of a 287 bp Alu repeat element in this gene with the levels of circulating enzyme or cardiovascular pathophysiology. Multiple alternatively spliced transcript variants encoding different isoforms have been identified, and two most abundant spliced variants encode the somatic form and the testicular form, respectively, that are equally active.

Synonyms:

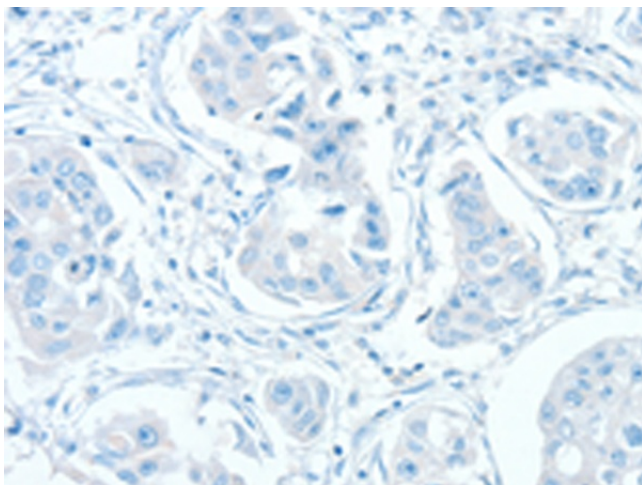
ACE1; carboxycathepsin; CD143; DCP; DCP1; MGC26566; MVCD3

Product images:

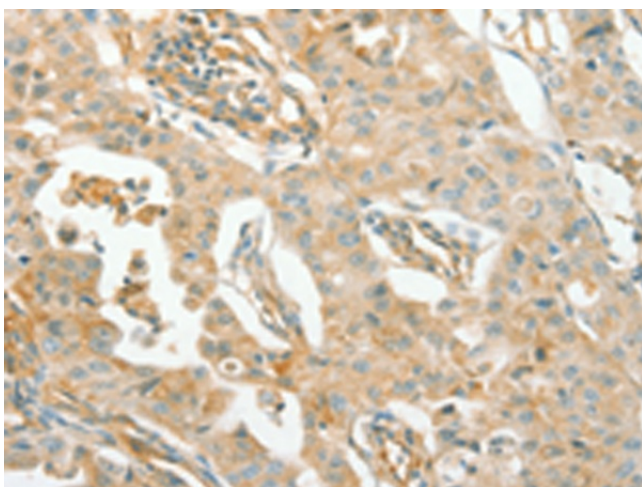
Gel: 10%SDS-PAGE
Lysate: 40 µg
Lane 1-3: Human ileum adenocarcinoma tissue
Human testis tissue
Human prostate tissue
Primary antibody: TA371208 (ACE Antibody) at dilution 1/240
Secondary antibody: Goat anti rabbit IgG at 1/8000 dilution
Exposure time: 30 seconds



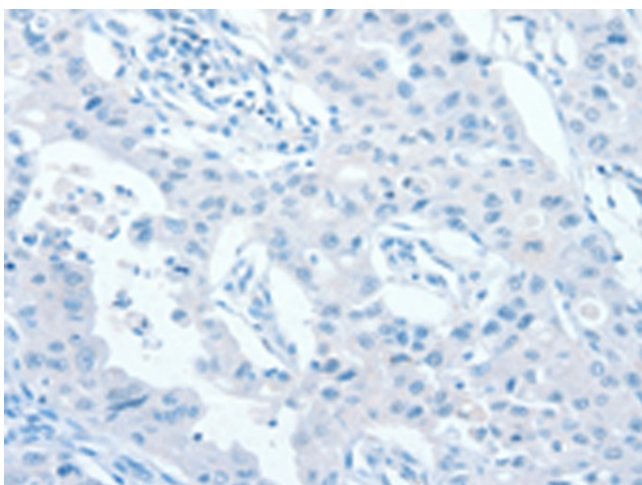
Immunohistochemistry of paraffin-embedded Human breast cancer tissue using TA371208 (ACE Antibody) at dilution 1/70 (Original magnification: ×200)



Immunohistochemistry of paraffin-embedded Human breast cancer tissue using TA371208 (ACE Antibody) at dilution 1/70, treated with synthetic peptide. (Original magnification: $\times 200$)



Immunohistochemistry of paraffin-embedded Human lung cancer tissue using TA371208 (ACE Antibody) at dilution 1/70 (Original magnification: $\times 200$)



Immunohistochemistry of paraffin-embedded Human lung cancer tissue using TA371208 (ACE Antibody) at dilution 1/70, treated with synthetic peptide. (Original magnification: $\times 200$)