

Product datasheet for **TA371206S**

AMPD1 Rabbit Polyclonal Antibody

Product data:

Product Type:	Primary Antibodies
Applications:	IHC, WB
Recommended Dilution:	WB: 500-2000 WB positive control: Human fetal muscle tissue IHC: 100-300 Positive control: Human liver cancer Predicted cell location: Cytoplasm
Reactivity:	Human
Host:	Rabbit
Isotype:	IgG
Clonality:	Polyclonal
Immunogen:	Synthetic peptide of human AMPD1
Formulation:	pH7.4 PBS, 0.05% NaN ₃ , 40% Glycerol
Concentration:	lot specific
Purification:	Antigen affinity purification
Conjugation:	Unconjugated
Storage:	Store at -20°C.
Stability:	1 year
Predicted Protein Size:	90 kDa
Gene Name:	adenosine monophosphate deaminase 1
Database Link:	Entrez Gene 270 Human P23109



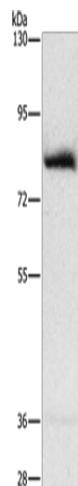
[View online »](#)

Background:

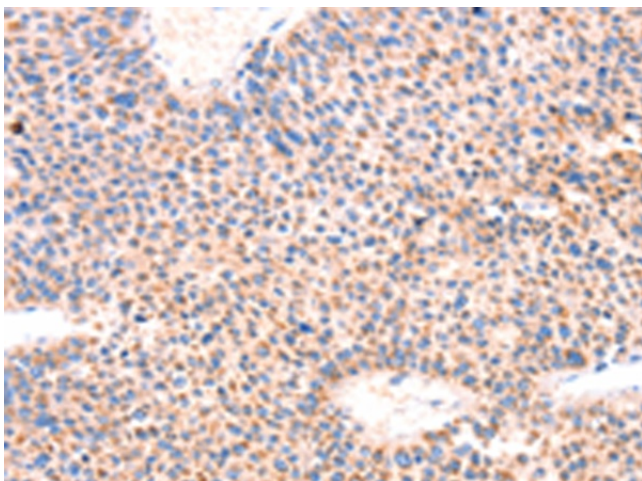
Adenosine monophosphate deaminase 1 catalyzes the deamination of AMP to IMP in skeletal muscle and plays an important role in the purine nucleotide cycle. Two other genes have been identified, AMPD2 and AMPD3, for the liver- and erythrocyte-specific isoforms, respectively. Deficiency of the muscle-specific enzyme is apparently a common cause of exercise-induced myopathy and probably the most common cause of metabolic myopathy in the human. Alternatively spliced transcript variants encoding different isoforms have been identified in this gene.

Synonyms:

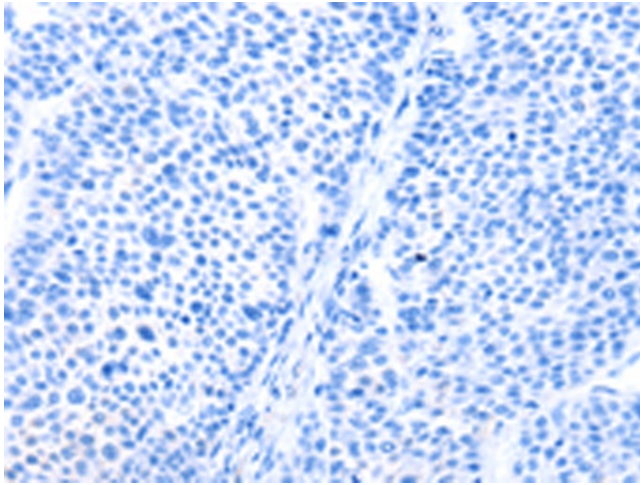
MAD; MADA

Product images:

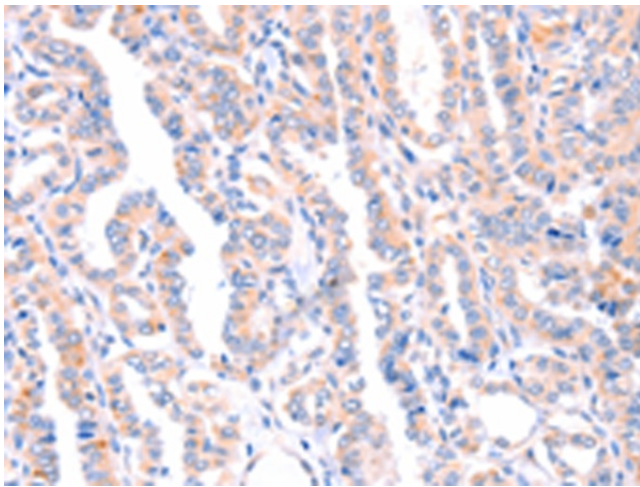
Gel: 8%SDS-PAGE
Lysate: 40 µg
Lane: Human fetal muscle tissue
Primary antibody: [TA371206] (AMPD1 Antibody)
at dilution 1/1600
Secondary antibody: Goat anti rabbit IgG at
1/8000 dilution
Exposure time: 3 seconds



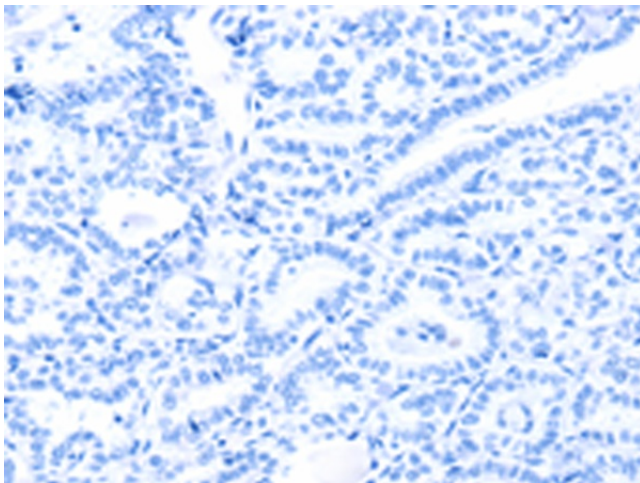
Immunohistochemistry of paraffin-embedded
Human liver cancer tissue using [TA371206]
(AMPD1 Antibody) at dilution 1/70 (Original
magnification: ×200)



Immunohistochemistry of paraffin-embedded Human liver cancer tissue using [TA371206] (AMPD1 Antibody) at dilution 1/70, treated with synthetic peptide. (Original magnification: ×200)



Immunohistochemistry of paraffin-embedded Human thyroid cancer tissue using [TA371206] (AMPD1 Antibody) at dilution 1/70 (Original magnification: ×200)



Immunohistochemistry of paraffin-embedded Human thyroid cancer tissue using [TA371206] (AMPD1 Antibody) at dilution 1/70, treated with synthetic peptide. (Original magnification: ×200)