

Product datasheet for **TA371187**

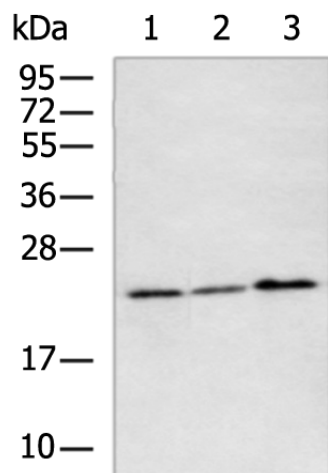
Neurogenin 1 (NEUROG1) Rabbit Polyclonal Antibody

Product data:

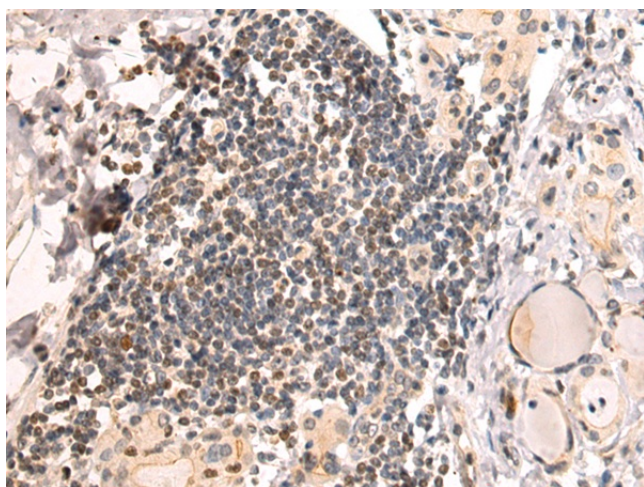
Product Type:	Primary Antibodies
Applications:	IHC, WB
Recommended Dilution:	WB: 500-2000 WB positive control: 293T, HepG2, A375 cell lysates IHC: 50-100 Positive control: Human thyroid cancer Predicted cell location: Nucleus
Reactivity:	Human
Host:	Rabbit
Isotype:	IgG
Clonality:	Polyclonal
Immunogen:	Synthetic peptide of human NEUROG1
Formulation:	pH7.4 PBS, 0.05% NaN ₃ , 40% Glycerol
Concentration:	lot specific
Purification:	Antigen affinity purification
Conjugation:	Unconjugated
Storage:	Store at -20°C.
Stability:	1 year
Predicted Protein Size:	26 kDa
Gene Name:	neurogenin 1
Database Link:	Entrez Gene 4762 Human Q92886
Background:	Acts as a transcriptional regulator. Involved in the initiation of neuronal differentiation. Activates transcription by binding to the E box (5'-CANNTG-3'). Associates with chromatin to enhancer regulatory elements in genes encoding key transcriptional regulators of neurogenesis.
Synonyms:	AKA; bHLHa6; Math4C; NEUROD3; NGN; NGN1



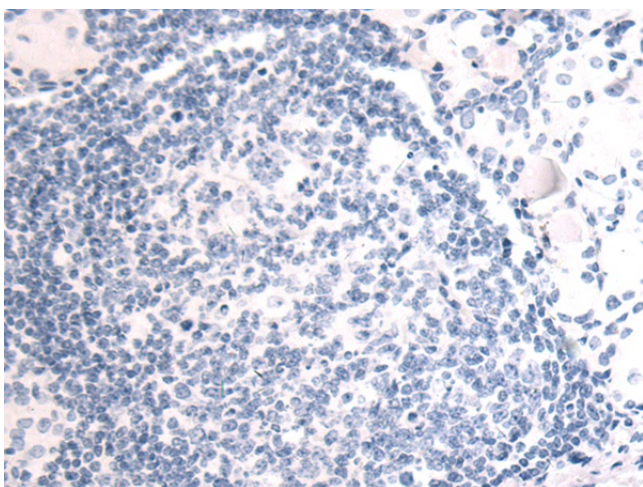
[View online »](#)

Product images:


Gel: 10%SDS-PAGE
 Lysate: 40 μ g
 Lane 1-3: 293T
 HepG2
 A375 cell lysates
 Primary antibody: TA371187 (NEUROG1
 Antibody) at dilution 1/250
 Secondary antibody: Goat anti rabbit IgG at
 1/5000 dilution
 Exposure time: 1 minute



Immunohistochemistry of paraffin-embedded
 Human thyroid cancer tissue using TA371187
 (NEUROG1 Antibody) at dilution 1/50 (Original
 magnification: \times 200)



Immunohistochemistry of paraffin-embedded Human thyroid cancer tissue using TA371187 (NEUROG1 Antibody) at dilution 1/50, treated with synthetic peptide. (Original magnification: ×200)