

## Product datasheet for **TA371182**

### KEAP1 Rabbit Polyclonal Antibody

#### Product data:

Product Type:	Primary Antibodies
Applications:	IHC, WB
Recommended Dilution:	WB: 500-2000 WB positive control: NIH/3T3 cell lysate IHC: 25-100 Positive control: Human breast cancer Predicted cell location: Cytoplasm and Nucleus
Reactivity:	Human, Mouse, Rat
Host:	Rabbit
Isotype:	IgG
Clonality:	Polyclonal
Immunogen:	Synthetic peptide of human KEAP1
Formulation:	pH7.4 PBS, 0.05% NaN <sub>3</sub> , 40% Glycerol
Concentration:	lot specific
Purification:	Antigen affinity purification
Conjugation:	Unconjugated
Storage:	Store at -20°C.
Stability:	1 year
Predicted Protein Size:	70 kDa
Gene Name:	kelch like ECH associated protein 1
Database Link:	<a href="#">Entrez Gene 9817 Human Q14145</a>

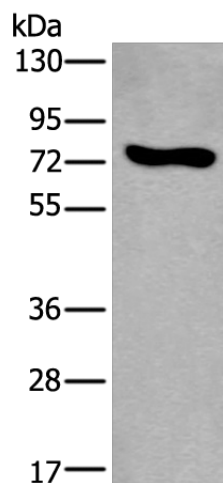
**Background:** This gene encodes a protein containing KELCH-1 like domains, as well as a BTB/POZ domain. Kelch-like ECH-associated protein 1 interacts with NF-E2-related factor 2 in a redox-sensitive manner and the dissociation of the proteins in the cytoplasm is followed by transportation of NF-E2-related factor 2 to the nucleus. This interaction results in the expression of the catalytic subunit of gamma-glutamylcysteine synthetase. Two alternatively spliced transcript variants encoding the same isoform have been found for this gene.



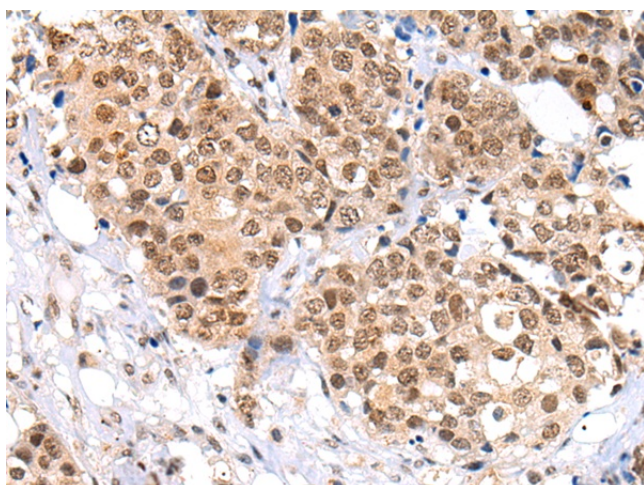
[View online »](#)

Synonyms: INrf2; KIAA0132; KLHL19; MGC1114; MGC4407; MGC9454; MGC10630; MGC20887

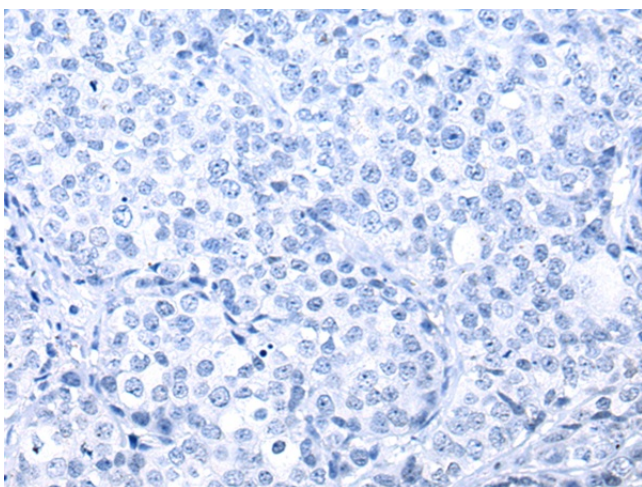
### Product images:



Gel: 6%SDS-PAGE  
Lysate: 40  $\mu$ g  
Lane: NIH/3T3 cell lysate  
Primary antibody: TA371182 (KEAP1 Antibody) at dilution 1/600  
Secondary antibody: Goat anti rabbit IgG at 1/8000 dilution  
Exposure time: 1 minute



Immunohistochemistry of paraffin-embedded Human breast cancer tissue using TA371182 (KEAP1 Antibody) at dilution 1/35 (Original magnification:  $\times$ 200)



Immunohistochemistry of paraffin-embedded Human breast cancer tissue using TA371182 (KEAP1 Antibody) at dilution 1/35, treated with synthetic peptide. (Original magnification: ×200)