

## Product datasheet for **TA371172S**

### **BAT3 (BAG6) Rabbit Polyclonal Antibody**

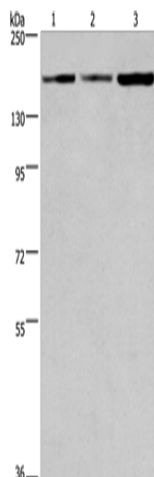
#### **Product data:**

Product Type:	Primary Antibodies
Applications:	WB
Recommended Dilution:	WB: 200-1000 WB positive control: 293T, hela and hepG2 cells
Reactivity:	Human, Mouse, Rat
Host:	Rabbit
Isotype:	IgG
Clonality:	Polyclonal
Immunogen:	Synthetic peptide of human BAG6
Formulation:	pH7.4 PBS, 0.05% NaN <sub>3</sub> , 40% Glycerol
Purification:	Antigen affinity purification
Conjugation:	Unconjugated
Storage:	Store at -20°C.
Stability:	1 year
Predicted Protein Size:	119 kDa
Gene Name:	BCL2 associated athanogene 6
Database Link:	<a href="#">Entrez Gene 7917 Human P46379</a>
Background:	This gene was first characterized as part of a cluster of genes located within the human major histocompatibility complex class III region. This gene encodes a nuclear protein that is cleaved by caspase 3 and is implicated in the control of apoptosis. In addition, the protein forms a complex with E1A binding protein p300 and is required for the acetylation of p53 in response to DNA damage. Multiple transcript variants encoding different isoforms have been found for this gene.
Synonyms:	BAG-6; BAT3; D6S52E; G3



[View online »](#)

## Product images:



Gel: 6%SDS-PAGE

Lysate: 40 µg

Lane 1-3: 293T cells

hela cells

hepG2 cells

Primary antibody: [TA371172] (BAG6 Antibody) at dilution 1/100

Secondary antibody: Goat anti rabbit IgG at 1/8000 dilution

Exposure time: 20 seconds