

Product datasheet for **TA371171S**

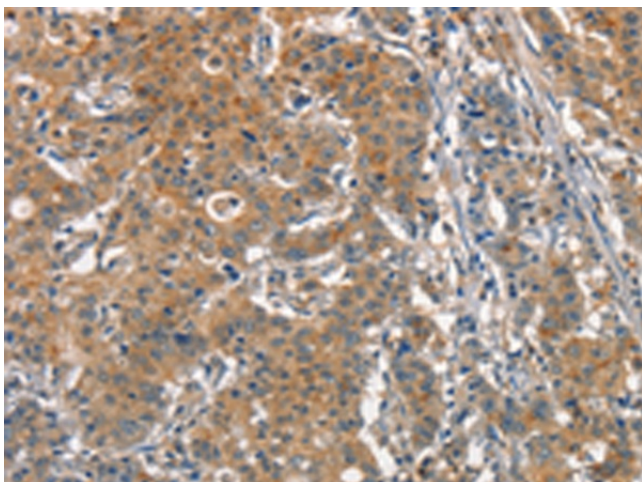
ACP4 Rabbit Polyclonal Antibody

Product data:

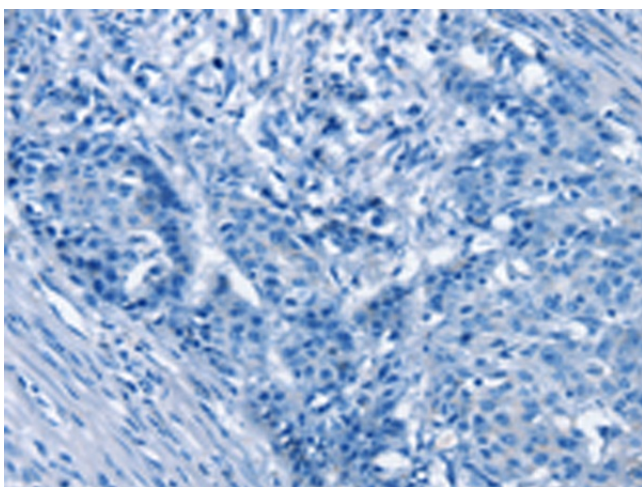
Product Type:	Primary Antibodies
Applications:	IHC
Recommended Dilution:	IHC: 25-100 Positive control: Human gastric cancer Predicted cell location: Cytoplasm
Reactivity:	Human, Mouse
Host:	Rabbit
Isotype:	IgG
Clonality:	Polyclonal
Immunogen:	Synthetic peptide of human ACP4
Formulation:	pH7.4 PBS, 0.05% NaN ₃ , 40% Glycerol
Purification:	Antigen affinity purification
Conjugation:	Unconjugated
Storage:	Store at -20°C.
Stability:	1 year
Gene Name:	acid phosphatase, testicular
Database Link:	Entrez Gene 93650 Human Q9BZG2
Background:	Acid phosphatases are enzymes capable of hydrolyzing orthophosphoric acid esters in an acid medium. This gene is up-regulated by androgens and is down-regulated by estrogens in the prostate cancer cell line. This gene exhibits a lower level of expression in testicular cancer tissues than in normal tissues. The protein encoded by this gene has structural similarity to prostatic and lysosomal acid phosphatases. Alternatively spliced transcript variants have been described, but their biological validity has not been determined. [provided by RefSeq, Jul 2008]
Synonyms:	ACPT



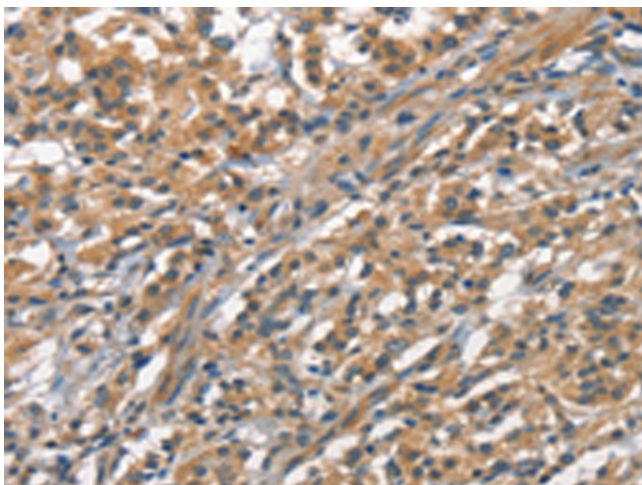
[View online »](#)

Product images:

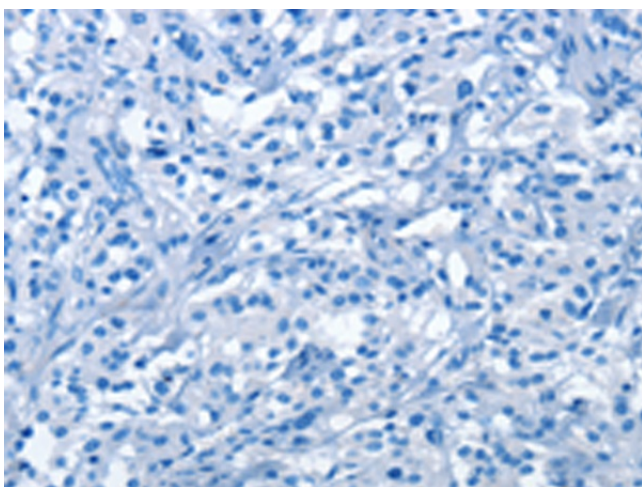
Immunohistochemistry of paraffin-embedded Human gastric cancer tissue using [TA371171] (ACP4 Antibody) at dilution 1/25 (Original magnification: $\times 200$)



Immunohistochemistry of paraffin-embedded Human gastric cancer tissue using [TA371171] (ACP4 Antibody) at dilution 1/25, treated with synthetic peptide. (Original magnification: $\times 200$)



Immunohistochemistry of paraffin-embedded Human thyroid cancer tissue using [TA371171] (ACP4 Antibody) at dilution 1/25 (Original magnification: $\times 200$)



Immunohistochemistry of paraffin-embedded Human thyroid cancer tissue using [TA371171] (ACP4 Antibody) at dilution 1/25, treated with synthetic peptide. (Original magnification: $\times 200$)