

Product datasheet for **TA371169**

MAGEA3 Rabbit Polyclonal Antibody

Product data:

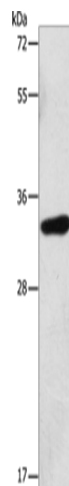
Product Type:	Primary Antibodies
Applications:	WB
Recommended Dilution:	WB: 200-1000 WB positive control: Human testis tissue
Reactivity:	Human
Host:	Rabbit
Isotype:	IgG
Clonality:	Polyclonal
Immunogen:	Synthetic peptide of human MAGEA3
Formulation:	pH7.4 PBS, 0.05% NaN ₃ , 40% Glycerol
Concentration:	lot specific
Purification:	Antigen affinity purification
Conjugation:	Unconjugated
Storage:	Store at -20°C.
Stability:	1 year
Predicted Protein Size:	35 kDa
Gene Name:	MAGE family member A3
Database Link:	Entrez Gene 4102 Human P43357

Background: This gene is a member of the MAGEA gene family. The members of this family encode proteins with 50 to 80% sequence identity to each other. The promoters and first exons of the MAGEA genes show considerable variability, suggesting that the existence of this gene family enables the same function to be expressed under different transcriptional controls. The MAGEA genes are clustered at chromosomal location Xq28. They have been implicated in some hereditary disorders, such as dyskeratosis congenita.

Synonyms: CT1.3; HIP8; HYPD; MAGE3; MAGEA6; MGC14613



[View online »](#)

Product images:

Gel: 12%SDS-PAGE
Lysate: 40 µg
Lane: Human testis tissue
Primary antibody: TA371169 (MAGEA3 Antibody)
at dilution 1/325
Secondary antibody: Goat anti rabbit IgG at
1/8000 dilution
Exposure time: 40 seconds