

## Product datasheet for **TA371167**

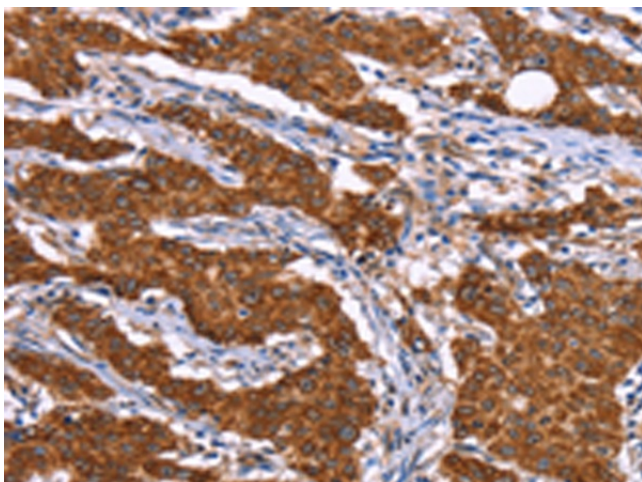
### **RSK4 (RPS6KA6) Rabbit Polyclonal Antibody**

#### **Product data:**

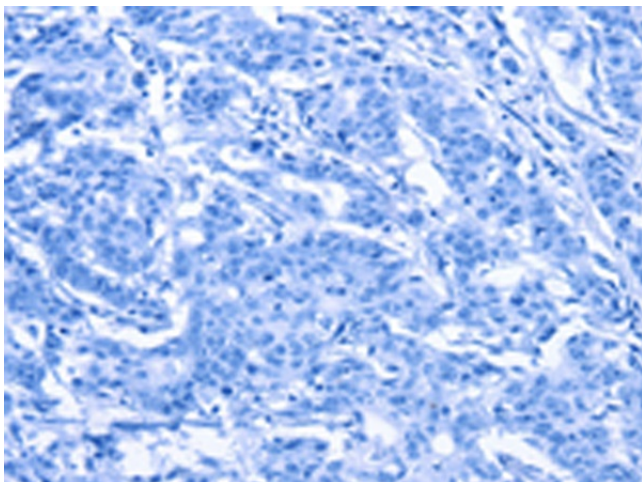
<b>Product Type:</b>	Primary Antibodies
<b>Applications:</b>	IHC
<b>Recommended Dilution:</b>	IHC: 25-100 Positive control: Human gastric cancer Predicted cell location: Cytoplasm
<b>Reactivity:</b>	Human
<b>Host:</b>	Rabbit
<b>Isotype:</b>	IgG
<b>Clonality:</b>	Polyclonal
<b>Immunogen:</b>	Synthetic peptide of human RPS6KA6
<b>Formulation:</b>	pH7.4 PBS, 0.05% NaN <sub>3</sub> , 40% Glycerol
<b>Concentration:</b>	lot specific
<b>Purification:</b>	Antigen affinity purification
<b>Conjugation:</b>	Unconjugated
<b>Storage:</b>	Store at -20°C.
<b>Stability:</b>	1 year
<b>Gene Name:</b>	ribosomal protein S6 kinase A6
<b>Database Link:</b>	<a href="#">Entrez Gene 27330 Human Q9UK32</a>
<b>Background:</b>	This gene encodes a member of ribosomal S6 kinase family, serine-threonine protein kinases which are regulated by growth factors. The encoded protein may be distinct from other members of this family, however, as studies suggest it is not growth factor dependent and may not participate in the same signaling pathways.
<b>Synonyms:</b>	pp90RSK4; RSK-4; RSK4



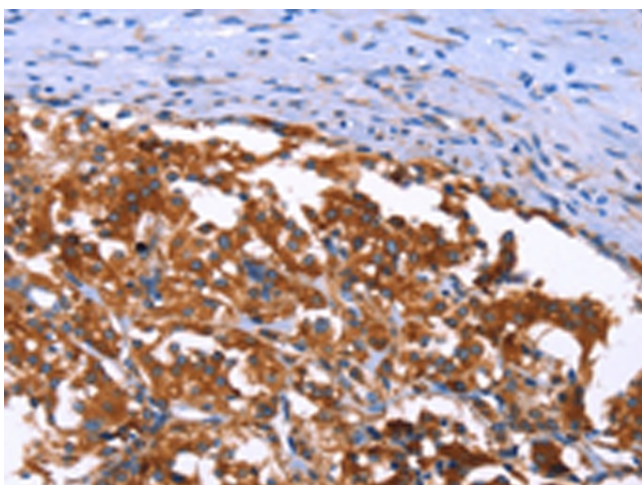
[View online »](#)

**Product images:**

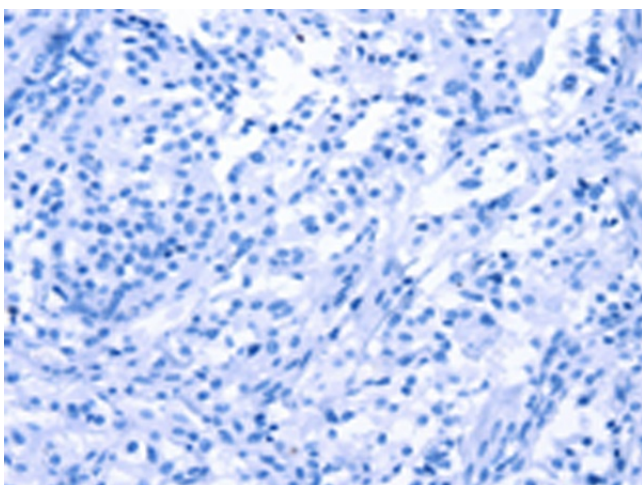
Immunohistochemistry of paraffin-embedded Human gastric cancer tissue using TA371167 (RPS6KA6 Antibody) at dilution 1/20 (Original magnification:  $\times 200$ )



Immunohistochemistry of paraffin-embedded Human gastric cancer tissue using TA371167 (RPS6KA6 Antibody) at dilution 1/20, treated with synthetic peptide. (Original magnification:  $\times 200$ )



Immunohistochemistry of paraffin-embedded Human thyroid cancer tissue using TA371167 (RPS6KA6 Antibody) at dilution 1/20 (Original magnification:  $\times 200$ )



Immunohistochemistry of paraffin-embedded Human thyroid cancer tissue using TA371167 (RPS6KA6 Antibody) at dilution 1/20, treated with synthetic peptide. (Original magnification:  $\times 200$ )