

Product datasheet for **TA371166S**

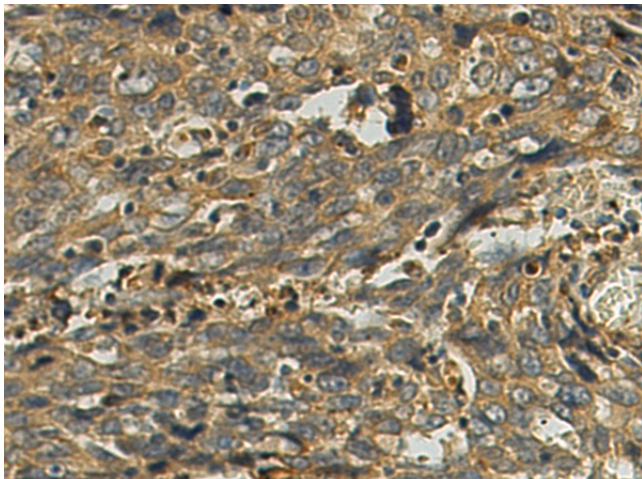
ORAI1 Rabbit Polyclonal Antibody

Product data:

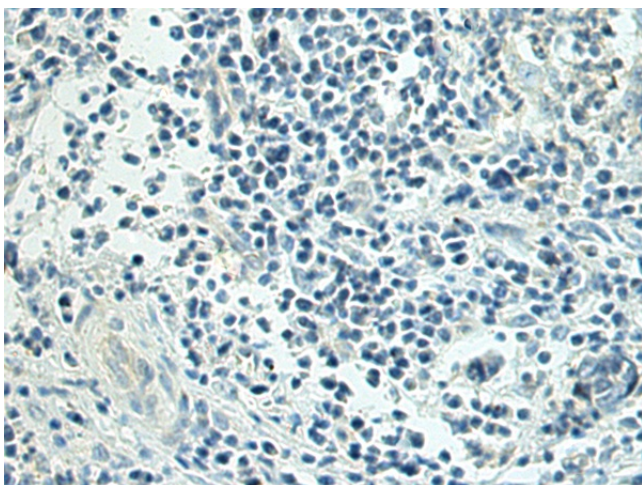
Product Type:	Primary Antibodies
Applications:	IHC
Recommended Dilution:	IHC: 50-200 Positive control: Human esophagus cancer Predicted cell location: Cell membrane
Reactivity:	Human, Mouse, Rat
Host:	Rabbit
Isotype:	IgG
Clonality:	Polyclonal
Immunogen:	Synthetic peptide of human ORAI1(L1)
Formulation:	pH7.4 PBS, 0.05% NaN ₃ , 40% Glycerol
Purification:	Antigen affinity purification
Conjugation:	Unconjugated
Storage:	Store at -20°C.
Stability:	1 year
Gene Name:	ORAI calcium release-activated calcium modulator 1
Database Link:	Entrez Gene 84876 Human Q96D31
Background:	The protein encoded by this gene is a membrane calcium channel subunit that is activated by the calcium sensor STIM1 when calcium stores are depleted. This type of channel is the primary way for calcium influx into T-cells. Defects in this gene are a cause of immune dysfunction with T-cell inactivation due to calcium entry defect type 1 (IDTICED1).
Synonyms:	CRACM1; FLJ14466; ORAT1; TMEM142A



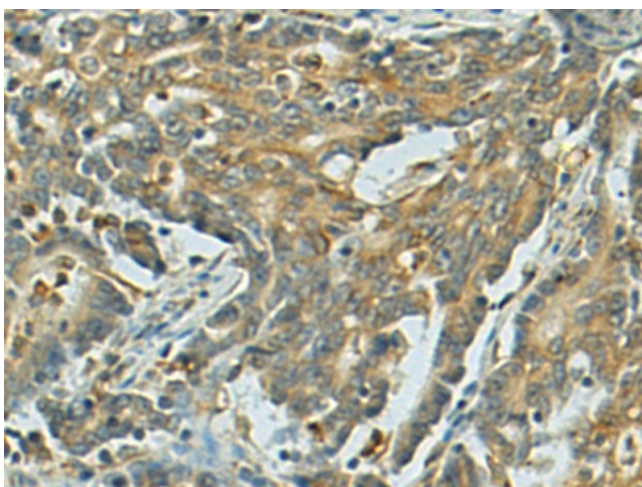
[View online »](#)

Product images:

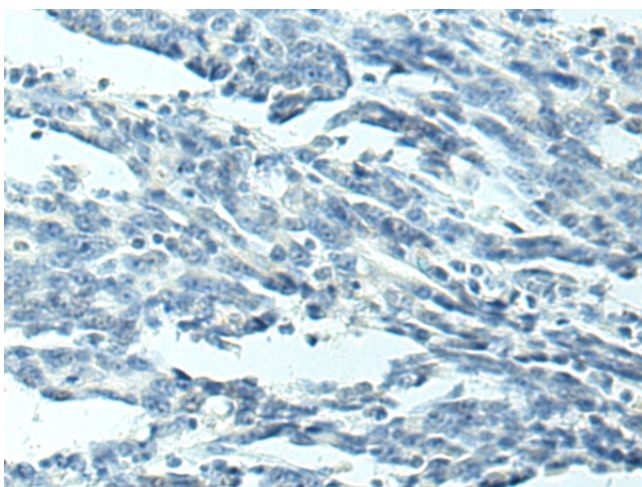
Immunohistochemistry of paraffin-embedded Human esophagus cancer using [TA371166] (ORAI1(L1) Antibody) at dilution 1/50 (Original magnification: $\times 200$)



Immunohistochemistry of paraffin-embedded Human esophagus cancer using [TA371166] (ORAI1(L1) Antibody) at dilution 1/50, treated with synthetic peptide. (Original magnification: $\times 200$)



Immunohistochemistry of paraffin-embedded Human gastric cancer using [TA371166] (ORAI1(L1) Antibody) at dilution 1/50 (Original magnification: $\times 200$)



Immunohistochemistry of paraffin-embedded Human gastric cancer using [TA371166] (ORAI1(L1) Antibody) at dilution 1/50, treated with synthetic peptide. (Original magnification: $\times 200$)