

## Product datasheet for **TA371164**

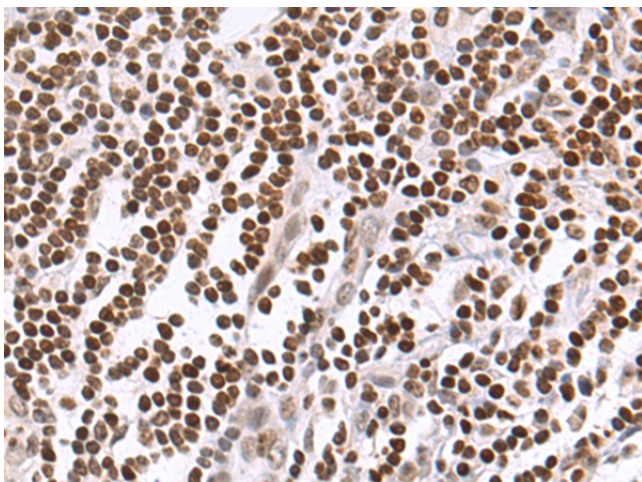
### **SAPK4 (MAPK13) Rabbit Polyclonal Antibody**

#### **Product data:**

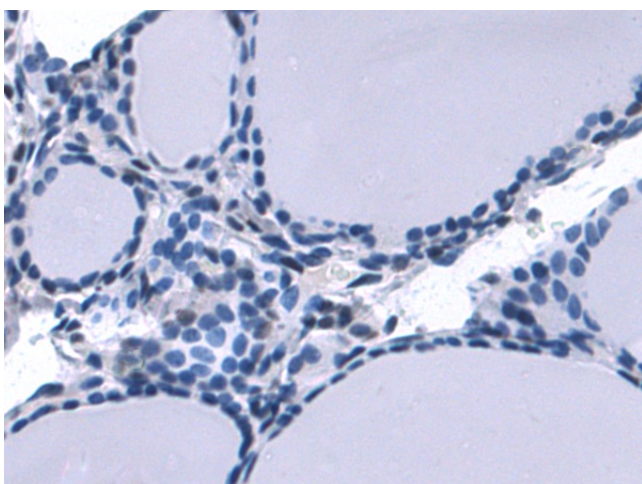
Product Type:	Primary Antibodies
Applications:	IHC
Recommended Dilution:	IHC: 50-200 Positive control: Human thyroid cancer Predicted cell location: Nucleus and Cytoplasm
Reactivity:	Human, Mouse, Rat
Host:	Rabbit
Isotype:	IgG
Clonality:	Polyclonal
Immunogen:	Synthetic peptide of human MAPK13
Formulation:	pH7.4 PBS, 0.05% NaN <sub>3</sub> , 40% Glycerol
Concentration:	lot specific
Purification:	Antigen affinity purification
Conjugation:	Unconjugated
Storage:	Store at -20°C.
Stability:	1 year
Gene Name:	mitogen-activated protein kinase 13
Database Link:	<a href="#">Entrez Gene 5603 Human</a> <a href="#">O15264</a>
Background:	This gene encodes a member of the mitogen-activated protein (MAP) kinase family. MAP kinases act as an integration point for multiple biochemical signals, and are involved in a wide variety of cellular processes such as proliferation, differentiation, transcription regulation and development. The encoded protein is a p38 MAP kinase and is activated by proinflammatory cytokines and cellular stress. Substrates of the encoded protein include the transcription factor ATF2 and the microtubule dynamics regulator stathmin. Alternatively spliced transcript variants have been observed for this gene.
Synonyms:	MGC99536; p38delta; PRKM13; SAPK4



[View online »](#)

**Product images:**

Immunohistochemistry of paraffin-embedded Human thyroid cancer tissue using TA371164 (MAPK13 Antibody) at dilution 1/50 (Original magnification:  $\times 200$ )



Immunohistochemistry of paraffin-embedded Human thyroid cancer tissue using TA371164 (MAPK13 Antibody) at dilution 1/50, treated with synthetic peptide. (Original magnification:  $\times 200$ )