

## Product datasheet for **TA371160**

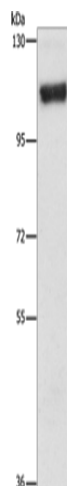
### PKC mu (PRKD1) Rabbit Polyclonal Antibody

#### Product data:

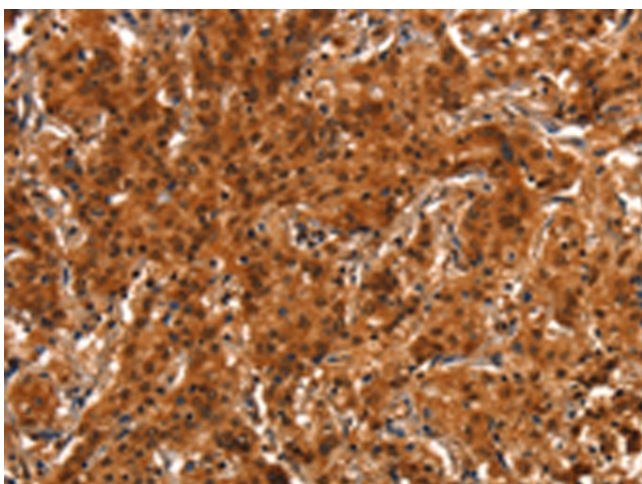
Product Type:	Primary Antibodies
Applications:	IHC, WB
Recommended Dilution:	WB: 200-1000 WB positive control: 293T cells IHC: 25-100 Positive control: Human gastric cancer Predicted cell location: Cytoplasm
Reactivity:	Human, Mouse, Rat
Host:	Rabbit
Isotype:	IgG
Clonality:	Polyclonal
Immunogen:	Synthetic peptide of human PRKD1
Formulation:	pH7.4 PBS, 0.05% NaN <sub>3</sub> , 40% Glycerol
Concentration:	lot specific
Purification:	Antigen affinity purification
Conjugation:	Unconjugated
Storage:	Store at -20°C.
Stability:	1 year
Predicted Protein Size:	102 kDa
Gene Name:	protein kinase D1
Database Link:	<a href="#">Entrez Gene 5587 Human Q15139</a>
Background:	PRKD1 is a serine/threonine kinase that regulates a variety of cellular functions, including membrane receptor signaling, transport at the Golgi, protection from oxidative stress at the mitochondria, gene transcription, and regulation of cell shape, motility, and adhesion.
Synonyms:	nPKC-D1; nPKC-mu; PKC-mu; PKCM; PKD; PKD1; PRKCM



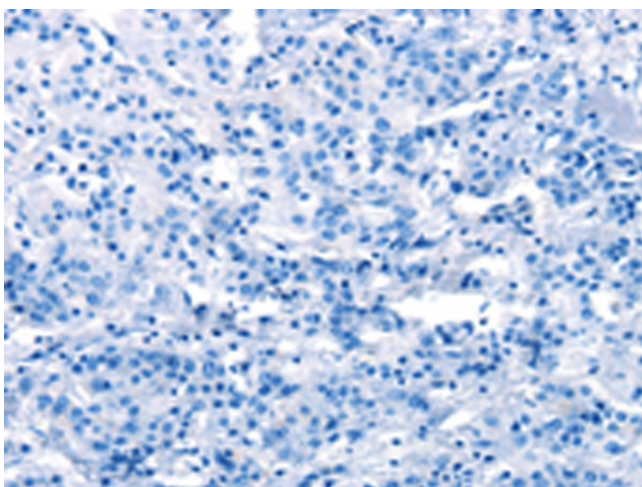
[View online »](#)

**Product images:**

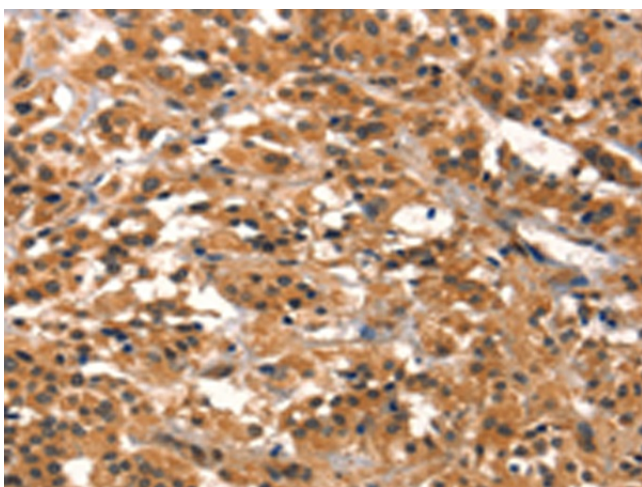
Gel: 6%SDS-PAGE  
Lysate: 40 µg  
Lane: 293T cells  
Primary antibody: TA371160 (PRKD1 Antibody) at dilution 1/250  
Secondary antibody: Goat anti rabbit IgG at 1/8000 dilution  
Exposure time: 10 minutes



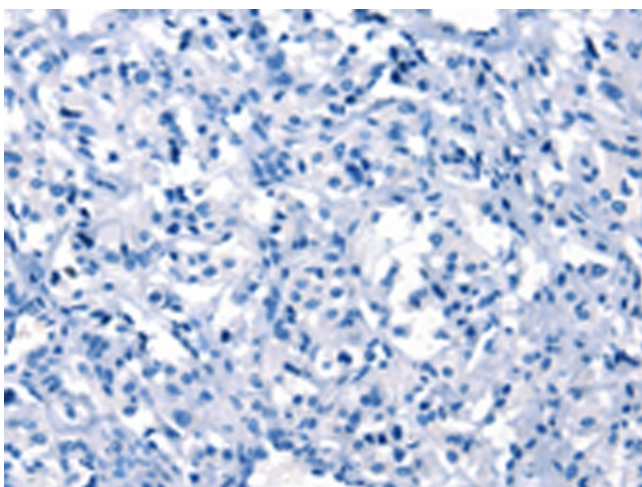
Immunohistochemistry of paraffin-embedded Human gastric cancer tissue using TA371160 (PRKD1 Antibody) at dilution 1/15 (Original magnification: x200)



Immunohistochemistry of paraffin-embedded Human gastric cancer tissue using TA371160 (PRKD1 Antibody) at dilution 1/15, treated with synthetic peptide. (Original magnification: ×200)



Immunohistochemistry of paraffin-embedded Human thyroid cancer tissue using TA371160 (PRKD1 Antibody) at dilution 1/15 (Original magnification: ×200)



Immunohistochemistry of paraffin-embedded Human thyroid cancer tissue using TA371160 (PRKD1 Antibody) at dilution 1/15, treated with synthetic peptide. (Original magnification: ×200)