

Product datasheet for **TA371156**

ARPC4 Rabbit Polyclonal Antibody

Product data:

Product Type:	Primary Antibodies
Applications:	IHC, WB
Recommended Dilution:	WB: 500-2000 WB positive control: NIH/3T3 cell, Mouse brain tissue, Mouse thymus tissue lysates IHC: 50-200 Positive control: Human liver cancer Predicted cell location: Cytoplasm and Nucleus
Reactivity:	Human, Mouse
Host:	Rabbit
Isotype:	IgG
Clonality:	Polyclonal
Immunogen:	Synthetic peptide of human ARPC4
Formulation:	pH7.4 PBS, 0.05% NaN ₃ , 40% Glycerol
Concentration:	lot specific
Purification:	Antigen affinity purification
Conjugation:	Unconjugated
Storage:	Store at -20°C.
Stability:	1 year
Predicted Protein Size:	20 kDa
Gene Name:	actin related protein 2/3 complex subunit 4
Database Link:	Entrez Gene 10093 Human P59998



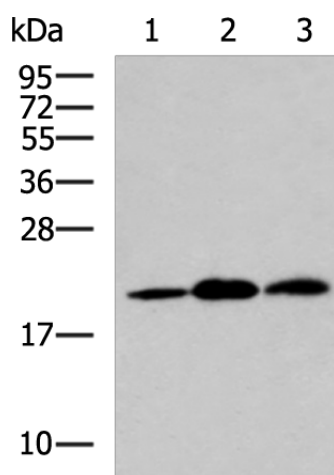
[View online »](#)

Background:

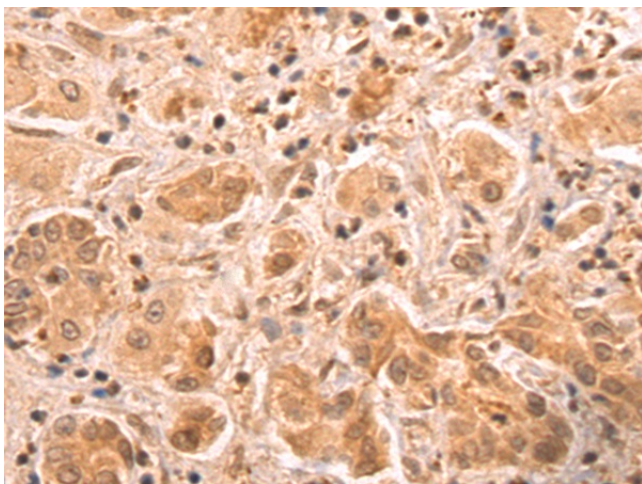
This gene encodes one of seven subunits of the human Arp2/3 protein complex. This complex controls actin polymerization in cells and has been conserved throughout eukaryotic evolution. This gene encodes the p20 subunit, which is necessary for actin nucleation and high-affinity binding to F-actin. Alternative splicing results in multiple transcript variants. Naturally occurring read-through transcription exists between this gene and the downstream tubulin tyrosine ligase-like family, member 3 (TTLL3), which results in the production of a fusion protein.

Synonyms:

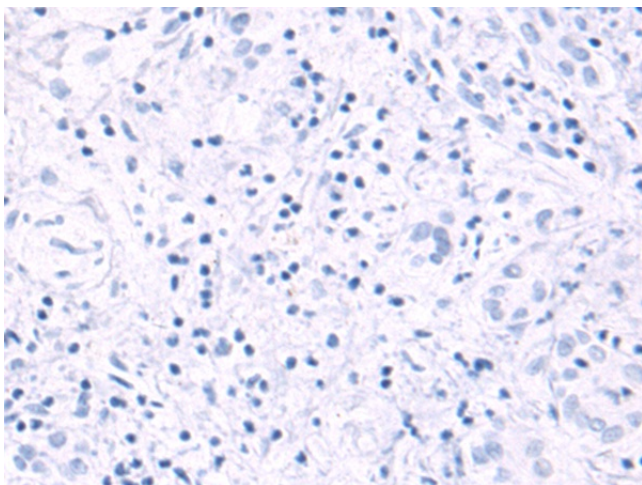
ARC20; MGC13544; p20-Arc

Product images:

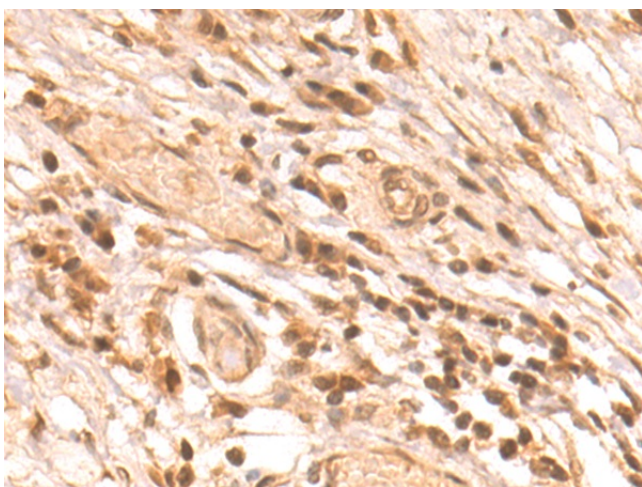
Gel: 12%SDS-PAGE
Lysate: 40 μ g
Lane 1-3: NIH/3T3 cell
Mouse brain tissue
Mouse thymus tissue lysates
Primary antibody: TA371156 (ARPC4 Antibody) at dilution 1/550
Secondary antibody: Goat anti rabbit IgG at 1/5000 dilution
Exposure time: 40 seconds



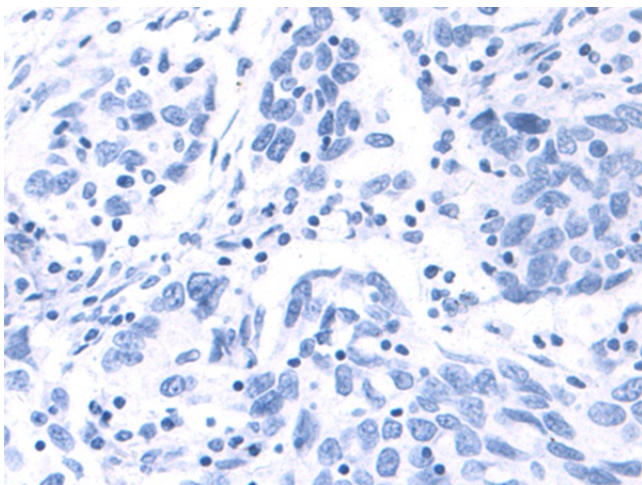
Immunohistochemistry of paraffin-embedded Human liver cancer tissue using TA371156 (ARPC4 Antibody) at dilution 1/50 (Original magnification: \times 200)



Immunohistochemistry of paraffin-embedded Human liver cancer tissue using TA371156 (ARPC4 Antibody) at dilution 1/50, treated with synthetic peptide. (Original magnification: ×200)



Immunohistochemistry of paraffin-embedded Human colorectal cancer tissue using TA371156 (ARPC4 Antibody) at dilution 1/50 (Original magnification: ×200)



Immunohistochemistry of paraffin-embedded Human colorectal cancer tissue using TA371156 (ARPC4 Antibody) at dilution 1/50, treated with synthetic peptide. (Original magnification: ×200)