

Product datasheet for **TA371151S**

AGPAT2 Rabbit Polyclonal Antibody

Product data:

Product Type:	Primary Antibodies
Applications:	IHC, WB
Recommended Dilution:	WB: 500-2000 WB positive control: K562, A549, 231, PC3 cell lysates IHC: 50-200 Positive control: Human esophagus cancer Predicted cell location: Cytoplasm and Cell membrane
Reactivity:	Human
Host:	Rabbit
Isotype:	IgG
Clonality:	Polyclonal
Immunogen:	Synthetic peptide of human AGPAT2
Formulation:	pH7.4 PBS, 0.05% NaN ₃ , 40% Glycerol
Purification:	Antigen affinity purification
Conjugation:	Unconjugated
Storage:	Store at -20°C.
Stability:	1 year
Predicted Protein Size:	31 kDa
Gene Name:	1-acylglycerol-3-phosphate O-acyltransferase 2
Database Link:	Entrez Gene 10555 Human O15120

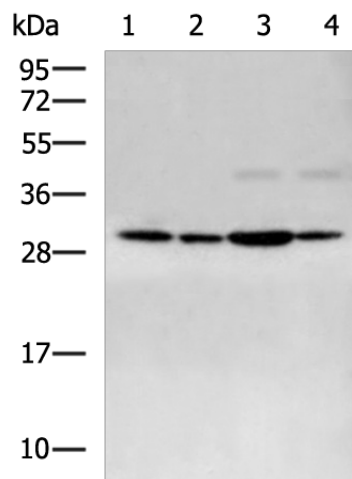
Background: This gene encodes a member of the 1-acylglycerol-3-phosphate O-acyltransferase family. The protein is located within the endoplasmic reticulum membrane and converts lysophosphatidic acid to phosphatidic acid, the second step in de novo phospholipid biosynthesis. Mutations in this gene have been associated with congenital generalized lipodystrophy (CGL), or Berardinelli-Seip syndrome, a disease characterized by a near absence of adipose tissue and severe insulin resistance. Alternate transcriptional splice variants, encoding different isoforms, have been characterized.



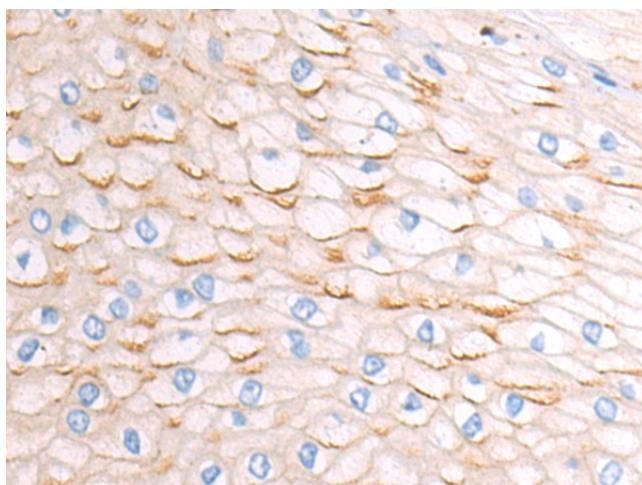
[View online »](#)

Synonyms: 1-AGPAT2; BSCL; BSCL1; LPAAB; LPAAT-beta

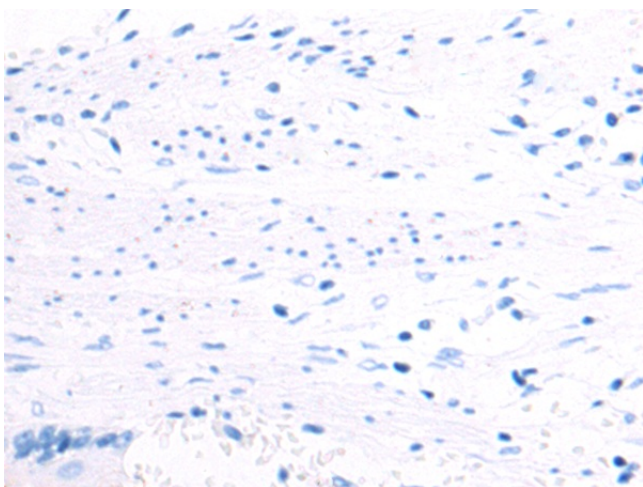
Product images:



Gel: 12%SDS-PAGE
 Lysate: 40 µg
 Lane 1-4: K562
 A549
 231
 PC3 cell lysates
 Primary antibody: [TA371151] (AGPAT2 Antibody)
 at dilution 1/500
 Secondary antibody: Goat anti rabbit IgG at
 1/5000 dilution
 Exposure time: 1 minute



Immunohistochemistry of paraffin-embedded
 Human esophagus cancer tissue using
 [TA371151] (AGPAT2 Antibody) at dilution 1/50
 (Original magnification: ×200)



Immunohistochemistry of paraffin-embedded Human esophagus cancer tissue using [TA371151] (AGPAT2 Antibody) at dilution 1/50, treated with synthetic peptide. (Original magnification: $\times 200$)