

Product datasheet for **TA371151**

AGPAT2 Rabbit Polyclonal Antibody

Product data:

Product Type:	Primary Antibodies
Applications:	IHC, WB
Recommended Dilution:	WB: 500-2000 WB positive control: K562, A549, 231, PC3 cell lysates IHC: 50-200 Positive control: Human esophagus cancer Predicted cell location: Cytoplasm and Cell membrane
Reactivity:	Human
Host:	Rabbit
Isotype:	IgG
Clonality:	Polyclonal
Immunogen:	Synthetic peptide of human AGPAT2
Formulation:	pH7.4 PBS, 0.05% NaN ₃ , 40% Glycerol
Concentration:	lot specific
Purification:	Antigen affinity purification
Conjugation:	Unconjugated
Storage:	Store at -20°C.
Stability:	1 year
Predicted Protein Size:	31 kDa
Gene Name:	1-acylglycerol-3-phosphate O-acyltransferase 2
Database Link:	Entrez Gene 10555 Human O15120



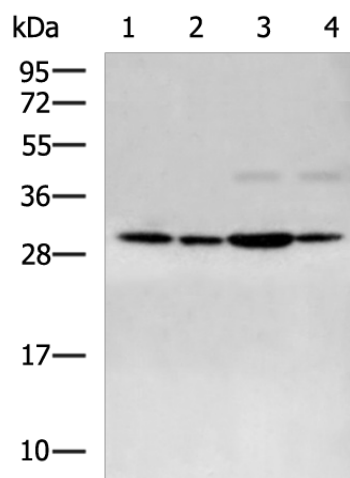
[View online »](#)

Background:

This gene encodes a member of the 1-acylglycerol-3-phosphate O-acyltransferase family. The protein is located within the endoplasmic reticulum membrane and converts lysophosphatidic acid to phosphatidic acid, the second step in de novo phospholipid biosynthesis. Mutations in this gene have been associated with congenital generalized lipodystrophy (CGL), or Berardinelli-Seip syndrome, a disease characterized by a near absence of adipose tissue and severe insulin resistance. Alternate transcriptional splice variants, encoding different isoforms, have been characterized.

Synonyms:

1-AGPAT2; BSCL; BSCL1; LPAAB; LPAAT-beta

Product images:

Gel: 12%SDS-PAGE

Lysate: 40 µg

Lane 1-4: K562

A549

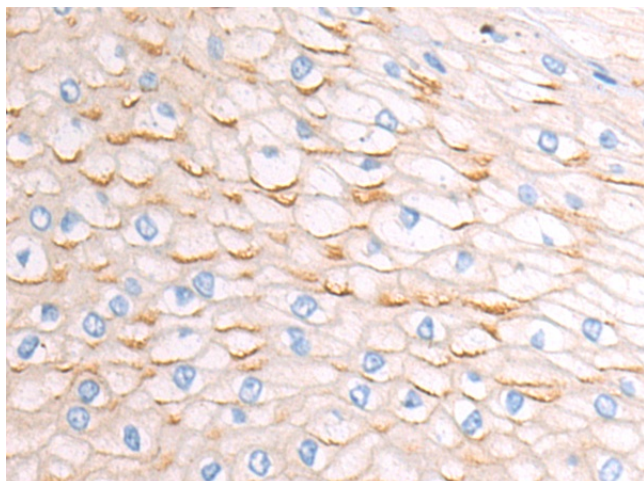
231

PC3 cell lysates

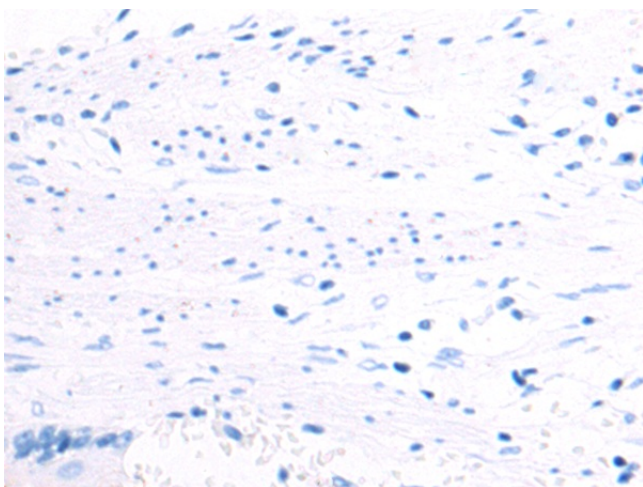
Primary antibody: TA371151 (AGPAT2 Antibody)
at dilution 1/500

Secondary antibody: Goat anti rabbit IgG at
1/5000 dilution

Exposure time: 1 minute



Immunohistochemistry of paraffin-embedded
Human esophagus cancer tissue using TA371151
(AGPAT2 Antibody) at dilution 1/50 (Original
magnification: ×200)



Immunohistochemistry of paraffin-embedded Human esophagus cancer tissue using TA371151 (AGPAT2 Antibody) at dilution 1/50, treated with synthetic peptide. (Original magnification: ×200)