

Product datasheet for **TA371148**

TTF2 Rabbit Polyclonal Antibody

Product data:

Product Type: Primary Antibodies
Applications: IHC
Recommended Dilution: IHC: 50-200
Positive control: Human esophagus cancer
Predicted cell location: Cytoplasm

Reactivity: Human

Host: Rabbit

Isotype: IgG

Clonality: Polyclonal

Immunogen: Synthetic peptide of human TTF2

Formulation: pH7.4 PBS, 0.05% NaN₃, 40% Glycerol

Concentration: lot specific

Purification: Antigen affinity purification

Conjugation: Unconjugated

Storage: Store at -20°C.

Stability: 1 year

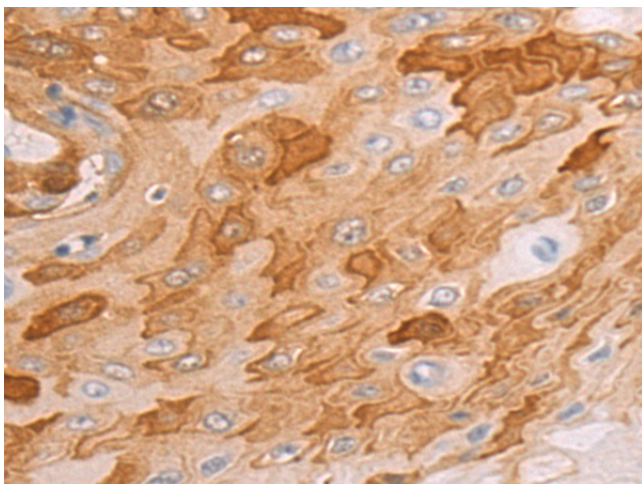
Gene Name: transcription termination factor 2

Database Link: [Entrez Gene 8458 Human](#)
[Q9UNY4](#)

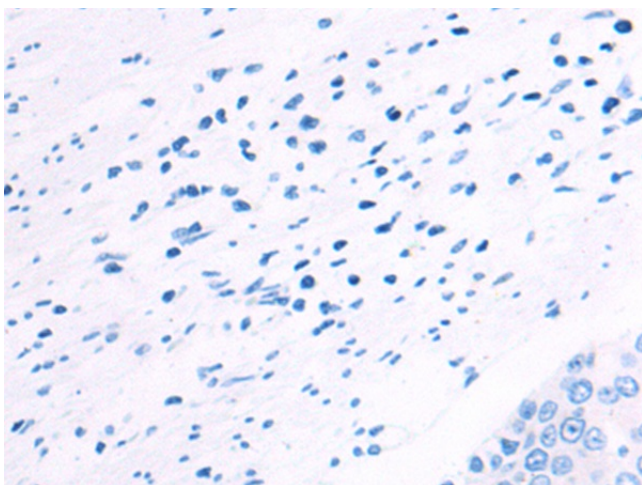
Background: This gene encodes a member of the SWI2/SNF2 family of proteins, which play a critical role in altering protein-DNA interactions. The encoded protein has been shown to have dsDNA-dependent ATPase activity and RNA polymerase II termination activity. This protein interacts with cell division cycle 5-like, associates with human splicing complexes, and plays a role in pre-mRNA splicing.

Synonyms: F2; FKHL15; FOXE1; HuF2; TITF2

[View online »](#)

Product images:

Immunohistochemistry of paraffin-embedded Human esophagus cancer tissue using TA371148 (TTF2 Antibody) at dilution 1/50 (Original magnification: $\times 200$)



Immunohistochemistry of paraffin-embedded Human esophagus cancer tissue using TA371148 (TTF2 Antibody) at dilution 1/50, treated with synthetic peptide. (Original magnification: $\times 200$)