

## Product datasheet for **TA371138S**

### CHRNA1 Rabbit Polyclonal Antibody

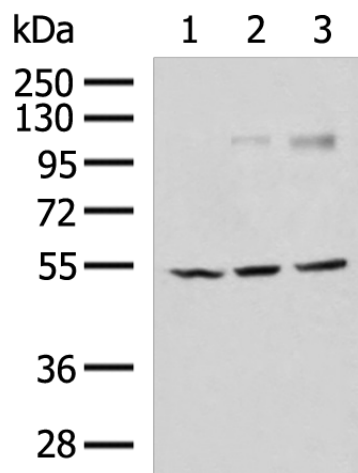
#### Product data:

Product Type:	Primary Antibodies
Applications:	IHC, WB
Recommended Dilution:	WB: 1000-5000 WB positive control: Mouse skeletal muscle tissue, Jurkat and 231 cell lysates IHC: 50-200 Positive control: Human gastric cancer Predicted cell location: Cell membrane
Reactivity:	Human, Mouse, Rat
Host:	Rabbit
Isotype:	IgG
Clonality:	Polyclonal
Immunogen:	Synthetic peptide of human CHRNA1
Formulation:	pH7.4 PBS, 0.05% NaN <sub>3</sub> , 40% Glycerol
Purification:	Antigen affinity purification
Conjugation:	Unconjugated
Storage:	Store at -20°C.
Stability:	1 year
Predicted Protein Size:	54 kDa
Gene Name:	cholinergic receptor nicotinic alpha 1 subunit
Database Link:	<a href="#">Entrez Gene 1134 Human P02708</a>
Background:	The muscle acetylcholine receptor consists of 5 subunits of 4 different types: 2 alpha subunits and 1 each of the beta, gamma, and delta subunits. This gene encodes an alpha subunit that plays a role in acetylcholine binding/channel gating. Alternatively spliced transcript variants encoding different isoforms have been identified.
Synonyms:	ACHRA; ACHRD; CHNRA; CHRNA; CMS2A; FCCMS; SCCMS

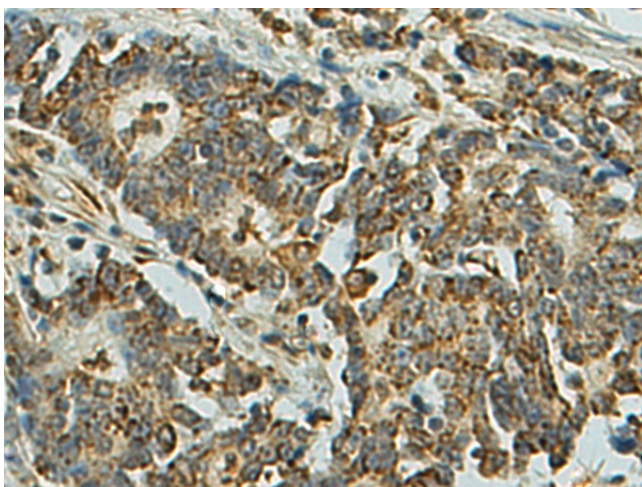


[View online »](#)

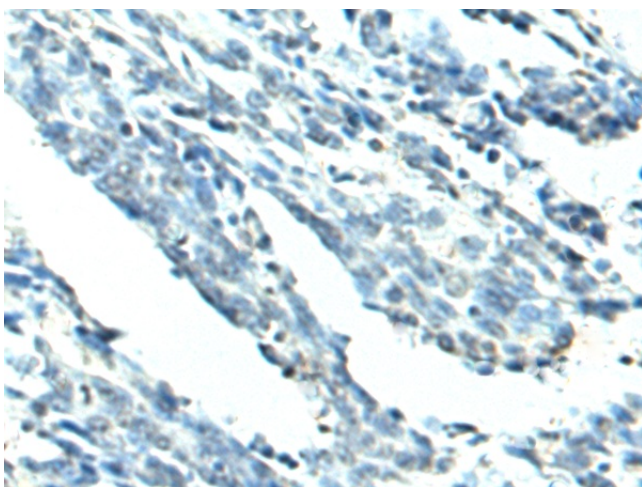
## Product images:



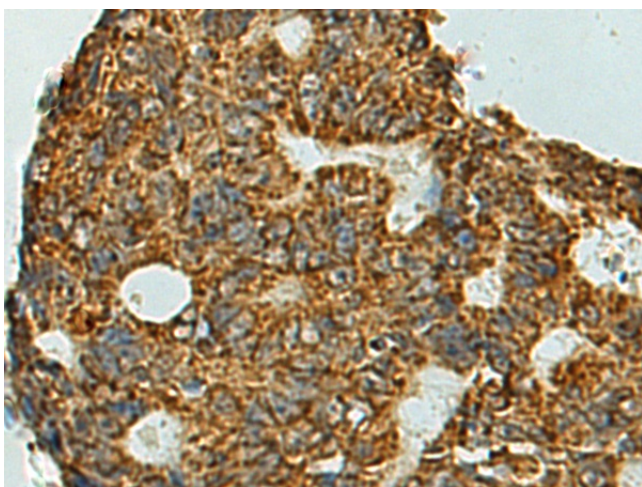
Gel: 8%SDS-PAGE  
Lysate: 40  $\mu$ g  
Lane 1-3: Mouse skeletal muscle tissue  
Jurkat and 231 cell lysates  
Primary antibody: [TA371138] (CHRNA1 Antibody)  
at dilution 1/1000  
Secondary antibody: Goat anti rabbit IgG at  
1/5000 dilution  
Exposure time: 30 seconds



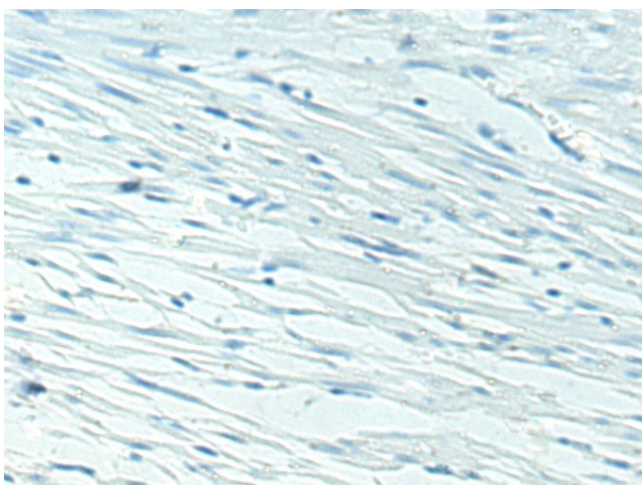
Immunohistochemistry of paraffin-embedded  
Human gastric cancer tissue using [TA371138]  
(CHRNA1 Antibody) at dilution 1/75 (Original  
magnification:  $\times$ 200)



Immunohistochemistry of paraffin-embedded Human gastric cancer tissue using [TA371138] (CHRNA1 Antibody) at dilution 1/75, treated with synthetic peptide. (Original magnification:  $\times 200$ )



Immunohistochemistry of paraffin-embedded Human colorectal cancer tissue using [TA371138] (CHRNA1 Antibody) at dilution 1/75 (Original magnification:  $\times 200$ )



Immunohistochemistry of paraffin-embedded Human colorectal cancer tissue using [TA371138] (CHRNA1 Antibody) at dilution 1/75, treated with synthetic peptide. (Original magnification:  $\times 200$ )