

## Product datasheet for **TA371137**

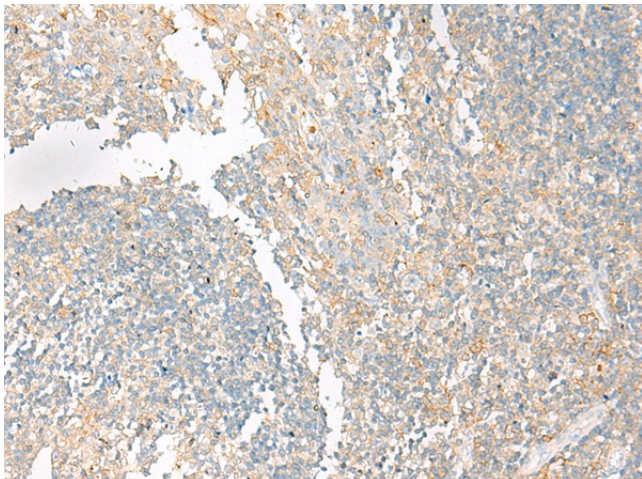
### MMP26 Rabbit Polyclonal Antibody

#### Product data:

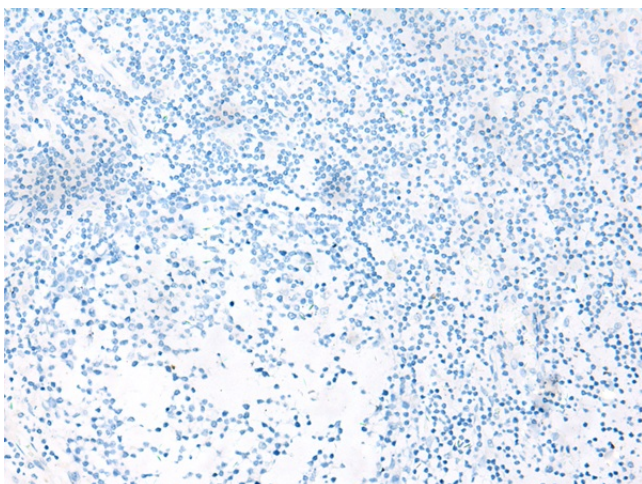
Product Type:	Primary Antibodies
Applications:	IHC
Recommended Dilution:	IHC: 25-100 Positive control: Human tonsil Predicted cell location: Secreted
Reactivity:	Human
Host:	Rabbit
Isotype:	IgG
Clonality:	Polyclonal
Immunogen:	Synthetic peptide of human MMP26
Formulation:	pH7.4 PBS, 0.05% NaN <sub>3</sub> , 40% Glycerol
Concentration:	lot specific
Purification:	Antigen affinity purification
Conjugation:	Unconjugated
Storage:	Store at -20°C.
Stability:	1 year
Gene Name:	matrix metalloproteinase 26
Database Link:	<a href="#">Entrez Gene 56547 Human Q9NRE1</a>
Background:	Proteins of the matrix metalloproteinase (MMP) family are involved in the breakdown of extracellular matrix in normal physiological processes, such as embryonic development, reproduction, and tissue remodeling, as well as in disease processes, such as arthritis and metastasis. The encoded preproprotein is proteolytically processed to generate the mature enzyme. This enzyme may degrade collagen type IV, fibronectin, fibrinogen, and beta-casein, and activate matrix metalloproteinase-9 by cleavage. The protein differs from most MMP family members in that it lacks a conserved C-terminal protein domain. The encoded protein may promote cell invasion in multiple human cancers.
Synonyms:	Endometase; Matrilysin-2; MGC126590; MGC126592; MMP-26; OTTHUMP00000069244



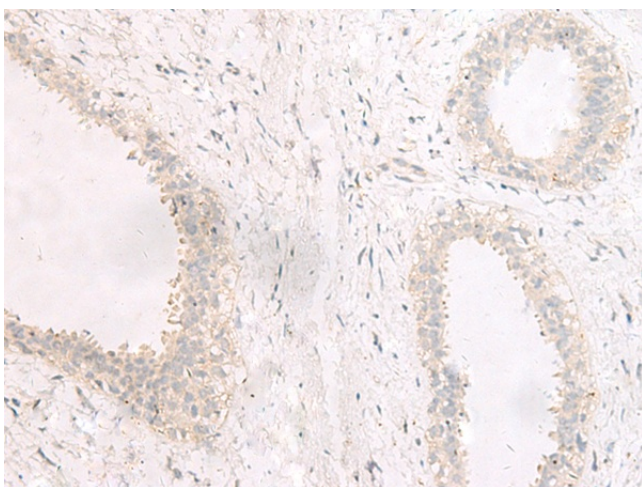
[View online »](#)

**Product images:**

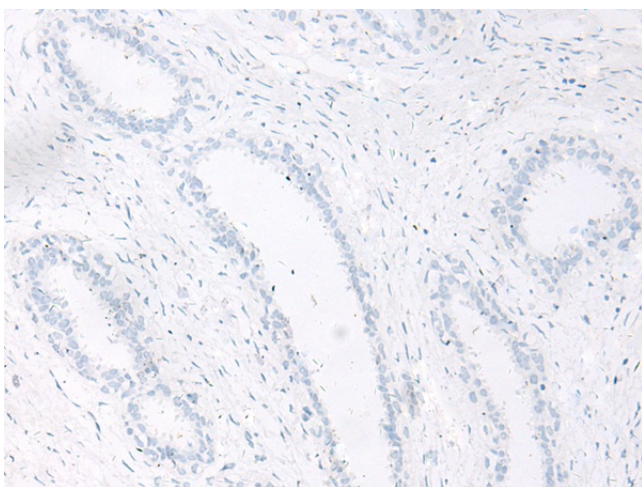
Immunohistochemistry of paraffin-embedded Human tonsil tissue using TA371137 (MMP26 Antibody) at dilution 1/40 (Original magnification: ×200)



Immunohistochemistry of paraffin-embedded Human tonsil tissue using TA371137 (MMP26 Antibody) at dilution 1/40, treated with synthetic peptide. (Original magnification: ×200)



Immunohistochemistry of paraffin-embedded Human breast cancer tissue using TA371137 (MMP26 Antibody) at dilution 1/40 (Original magnification:  $\times 200$ )



Immunohistochemistry of paraffin-embedded Human breast cancer tissue using TA371137 (MMP26 Antibody) at dilution 1/40, treated with synthetic peptide. (Original magnification:  $\times 200$ )