

Product datasheet for **TA371123**

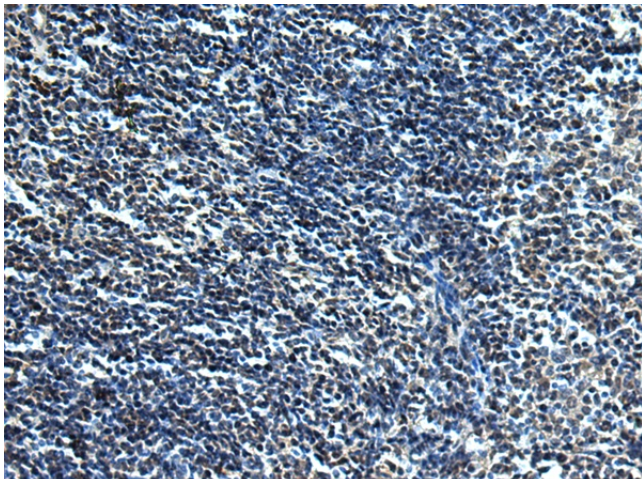
GLUT12 (SLC2A12) Rabbit Polyclonal Antibody

Product data:

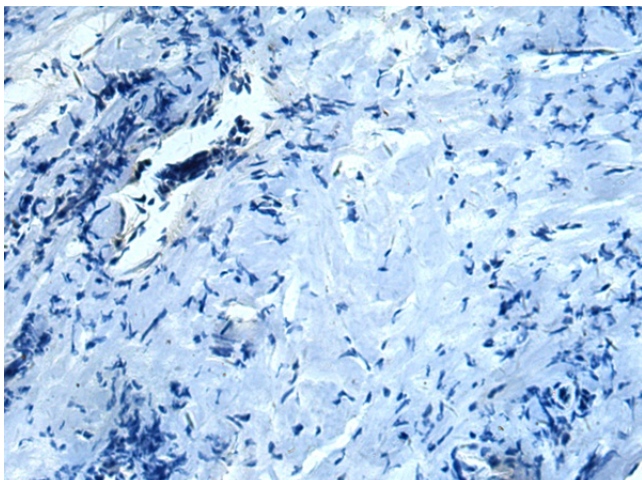
Product Type:	Primary Antibodies
Applications:	IHC
Recommended Dilution:	IHC: 50-100 Positive control: Human tonsil Predicted cell location: Cytoplasm
Reactivity:	Human
Host:	Rabbit
Isotype:	IgG
Clonality:	Polyclonal
Immunogen:	Synthetic peptide of human SLC2A12
Formulation:	pH7.4 PBS, 0.05% NaN ₃ , 40% Glycerol
Concentration:	lot specific
Purification:	Antigen affinity purification
Conjugation:	Unconjugated
Storage:	Store at -20°C.
Stability:	1 year
Gene Name:	solute carrier family 2 member 12
Database Link:	Entrez Gene 154091 Human Q8TD20
Background:	SLC2A12 belongs to a family of transporters that catalyze the uptake of sugars through facilitated diffusion (Rogers et al., 2002). This family of transporters show conservation of 12 transmembrane helices as well as functionally significant amino acid residues (Joost and Thorens, 2001 [PubMed 11780753]).
Synonyms:	GLUT-12; GLUT8; GLUT12



[View online »](#)

Product images:

Immunohistochemistry of paraffin-embedded Human tonsil tissue using TA371123 (SLC2A12 Antibody) at dilution 1/30 (Original magnification: ×200)



Immunohistochemistry of paraffin-embedded Human tonsil tissue using TA371123 (SLC2A12 Antibody) at dilution 1/30, treated with synthetic peptide. (Original magnification: ×200)