

Product datasheet for **TA371122S**

CXCL7 (PPBP) Rabbit Polyclonal Antibody

Product data:

Product Type:	Primary Antibodies
Applications:	IHC, WB
Recommended Dilution:	WB: 1000-5000 WB positive control: Human plasma solution IHC: 25-100 Positive control: Human lung cancer Predicted cell location: Secreted
Reactivity:	Human
Host:	Rabbit
Isotype:	IgG
Clonality:	Polyclonal
Immunogen:	Synthetic peptide of human PPBP
Formulation:	pH7.4 PBS, 0.05% NaN ₃ , 40% Glycerol
Purification:	Antigen affinity purification
Conjugation:	Unconjugated
Storage:	Store at -20°C.
Stability:	1 year
Predicted Protein Size:	14 kDa
Gene Name:	pro-platelet basic protein
Database Link:	Entrez Gene 5473 Human P02775

Background: The protein encoded by this gene is a platelet-derived growth factor that belongs to the CXC chemokine family. This growth factor is a potent chemoattractant and activator of neutrophils. It has been shown to stimulate various cellular processes including DNA synthesis, mitosis, glycolysis, intracellular cAMP accumulation, prostaglandin E₂ secretion, and synthesis of hyaluronic acid and sulfated glycosaminoglycan. It also stimulates the formation and secretion of plasminogen activator by synovial cells. The protein also is an antimicrobial protein with bactericidal and antifungal activity.

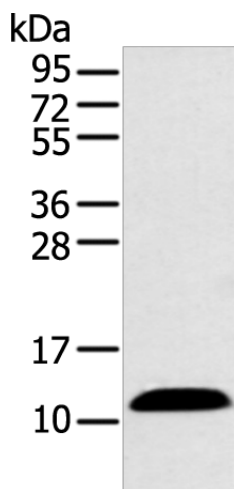


[View online »](#)

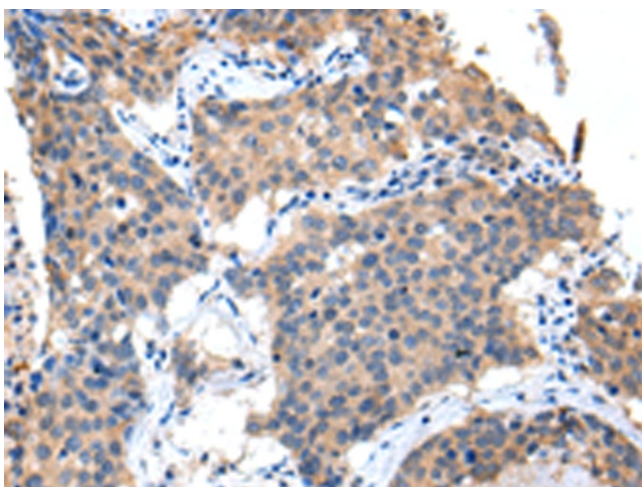
Synonyms:

B-TG1; Beta-TG; beta-thromboglobulin; CTAP-III; CTAP3; CTAPIII; CXCL7; LA-PF4; LDGF; MDGF; NAP-2; NAP-2-L1; PBP; SCYB7; TC1; TC2; TGB; TGB1; THBGB; THBGB1

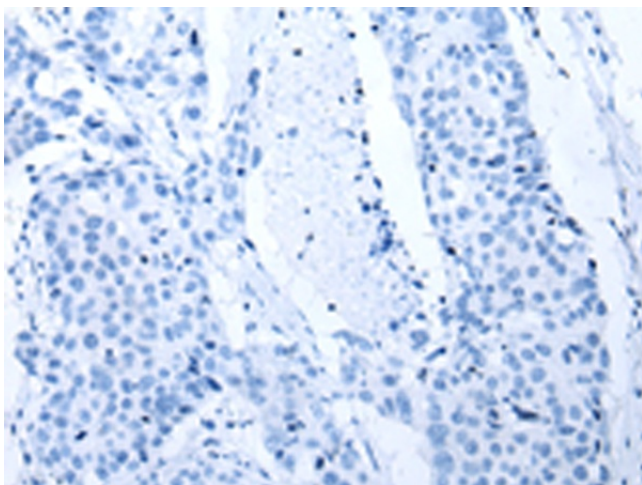
Product images:



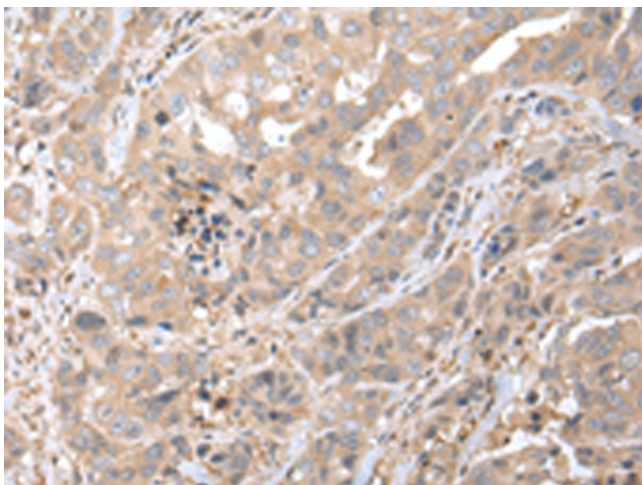
Gel: 12%SDS-PAGE
Lysate: 40 µg
Lane: Human plasma solution
Primary antibody: [TA371122] (PPBP Antibody) at dilution 1/500
Secondary antibody: Goat anti rabbit IgG at 1/8000 dilution
Exposure time: 10 seconds



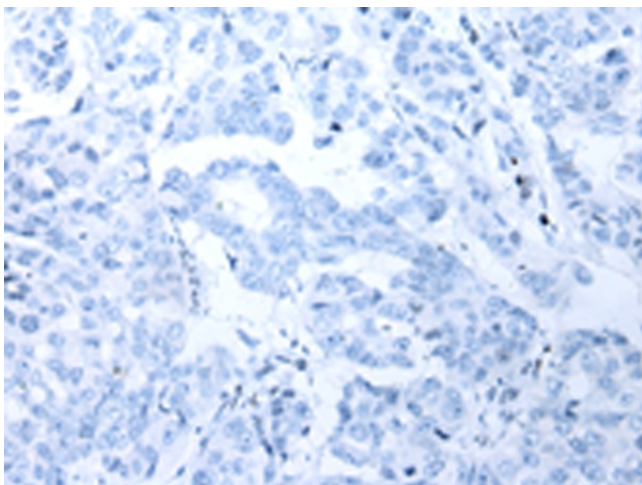
Immunohistochemistry of paraffin-embedded Human lung cancer tissue using [TA371122] (PPBP Antibody) at dilution 1/35 (Original magnification: ×200)



Immunohistochemistry of paraffin-embedded Human lung cancer tissue using [TA371122] (PPBP Antibody) at dilution 1/35, treated with synthetic peptide. (Original magnification: $\times 200$)



Immunohistochemistry of paraffin-embedded Human breast cancer tissue using [TA371122] (PPBP Antibody) at dilution 1/35 (Original magnification: $\times 200$)



Immunohistochemistry of paraffin-embedded Human breast cancer tissue using [TA371122] (PPBP Antibody) at dilution 1/35, treated with synthetic peptide. (Original magnification: $\times 200$)