

Product datasheet for **TA371117S**

FOXC2 Rabbit Polyclonal Antibody

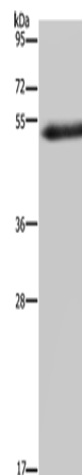
Product data:

Product Type:	Primary Antibodies
Applications:	WB
Recommended Dilution:	WB: 500-2000 WB positive control: Human breast infiltrative duct tissue
Reactivity:	Human, Mouse, Rat
Host:	Rabbit
Isotype:	IgG
Clonality:	Polyclonal
Immunogen:	Synthetic peptide of human FOXC2
Formulation:	pH7.4 PBS, 0.05% NaN ₃ , 40% Glycerol
Purification:	Antigen affinity purification
Conjugation:	Unconjugated
Storage:	Store at -20°C.
Stability:	1 year
Predicted Protein Size:	54 kDa
Gene Name:	forkhead box C2
Database Link:	Entrez Gene 2303 Human Q99958
Background:	This gene belongs to the forkhead family of transcription factors which is characterized by a distinct DNA-binding forkhead domain. The specific function of this gene has not yet been determined; however, it may play a role in the development of mesenchymal tissues.
Synonyms:	FKHL14; LD; MFH-1; MFH1



[View online »](#)

Product images:



Gel: 8%SDS-PAGE

Lysate: 40 μ g

Lane: Human breast infiltrative duct tissue

Primary antibody: [TA371117] (FOXC2 Antibody)
at dilution 1/733

Secondary antibody: Goat anti rabbit IgG at
1/8000 dilution

Exposure time: 5 minutes