

## Product datasheet for **TA371098S**

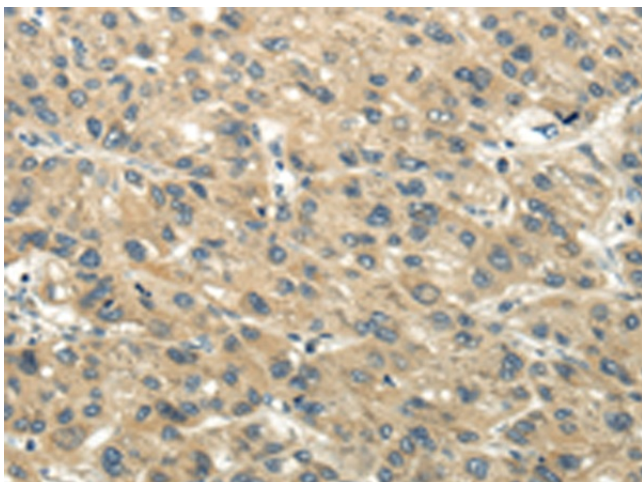
### Chromogranin B (CHGB) Rabbit Polyclonal Antibody

#### Product data:

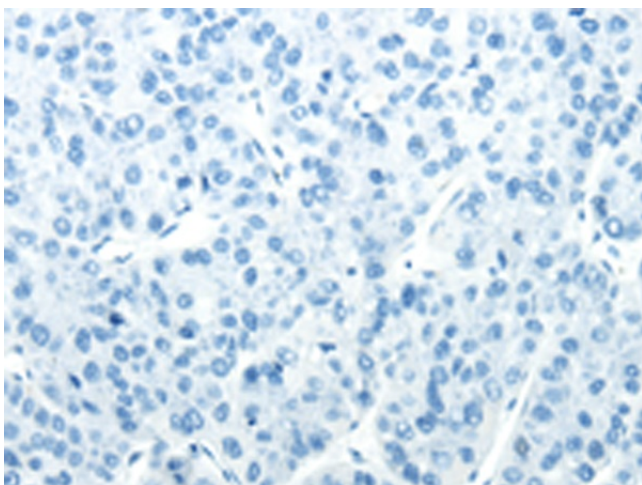
Product Type:	Primary Antibodies
Applications:	IHC
Recommended Dilution:	IHC: 30-150 Positive control: Human liver cancer Predicted cell location: Cytoplasm
Reactivity:	Human, Mouse, Rat
Host:	Rabbit
Isotype:	IgG
Clonality:	Polyclonal
Immunogen:	Synthetic peptide of human CHGB
Formulation:	pH7.4 PBS, 0.05% NaN <sub>3</sub> , 40% Glycerol
Purification:	Antigen affinity purification
Conjugation:	Unconjugated
Storage:	Store at -20°C.
Stability:	1 year
Gene Name:	chromogranin B
Database Link:	<a href="#">Entrez Gene 1114 Human P05060</a>
Background:	This gene encodes a tyrosine-sulfated secretory protein abundant in peptidergic endocrine cells and neurons. This protein may serve as a precursor for regulatory peptides.
Synonyms:	CgB; Chromogranin-B; SCG1; Sgl



[View online »](#)

**Product images:**

Immunohistochemistry of paraffin-embedded Human liver cancer tissue using [TA371098] (CHGB Antibody) at dilution 1/40 (Original magnification:  $\times 200$ )



Immunohistochemistry of paraffin-embedded Human liver cancer tissue using [TA371098] (CHGB Antibody) at dilution 1/40, treated with synthetic peptide. (Original magnification:  $\times 200$ )