

Product datasheet for **TA371090**

MTCO2 (COX2) Rabbit Polyclonal Antibody

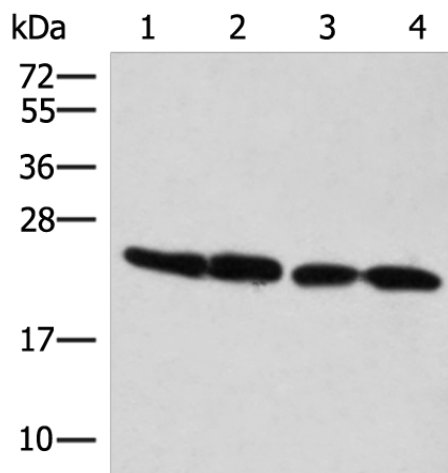
Product data:

Product Type:	Primary Antibodies
Applications:	IHC, WB
Recommended Dilution:	WB: 1000-5000 WB positive control: K562, 293T, 231 and A549 cell lysates IHC: 50-200 Positive control: Human breast cancer Predicted cell location: Cytoplasm
Reactivity:	Human
Host:	Rabbit
Isotype:	IgG
Clonality:	Polyclonal
Immunogen:	Synthetic peptide of human MT-CO2
Formulation:	pH7.4 PBS, 0.05% NaN ₃ , 40% Glycerol
Concentration:	lot specific
Purification:	Antigen affinity purification
Conjugation:	Unconjugated
Storage:	Store at -20°C.
Stability:	1 year
Predicted Protein Size:	26 kDa
Gene Name:	mitochondrially encoded cytochrome c oxidase II
Database Link:	Entrez Gene 4513 Human P00403
Background:	Cytochrome c oxidase is the component of the respiratory chain that catalyzes the reduction of oxygen to water. Subunits 1-3 form the functional core of the enzyme complex. Subunit 2 transfers the electrons from cytochrome c via its binuclear copper A center to the bimetallic center of the catalytic subunit 1.



[View online »](#)

Product images:



Gel: 12%SDS-PAGE

Lysate: 40 μ g

Lane 1-4: K562

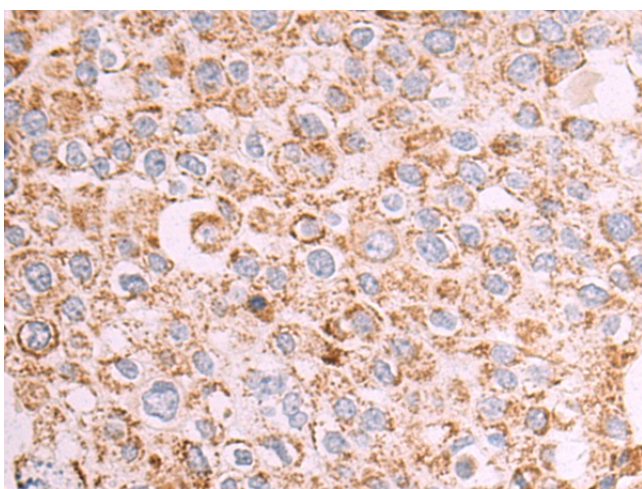
293T

231 and A549 cell lysates

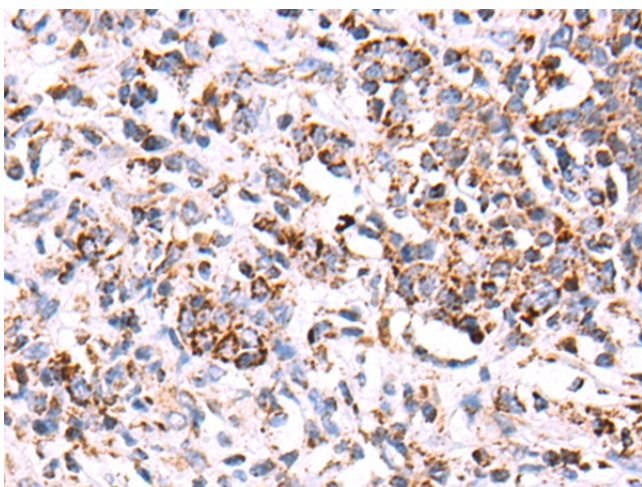
Primary antibody: TA371090 (MT-CO2 Antibody)
at dilution 1/800

Secondary antibody: Goat anti rabbit IgG at
1/8000 dilution

Exposure time: 5 seconds



Immunohistochemistry of paraffin-embedded
Human breast cancer tissue using TA371090 (MT-
CO2 Antibody) at dilution 1/50. (Original
magnification: \times 200)



Immunohistochemistry of paraffin-embedded Human gastric cancer tissue using TA371090 (MT-CO2 Antibody) at dilution 1/50. (Original magnification: $\times 200$)