

Product datasheet for **TA371085**

C5orf25 (SIMC1) Rabbit Polyclonal Antibody

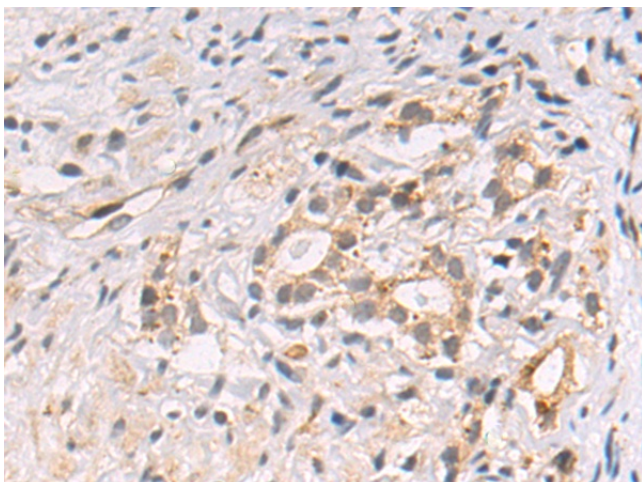
Product data:

Product Type:	Primary Antibodies
Applications:	IHC
Recommended Dilution:	IHC: 50-100 Positive control: Human prostate cancer Predicted cell location: Cytoplasm
Reactivity:	Human
Host:	Rabbit
Isotype:	IgG
Clonality:	Polyclonal
Immunogen:	Fusion protein of human SIMC1
Formulation:	pH7.4 PBS, 0.05% NaN ₃ , 40% Glycerol
Concentration:	lot specific
Purification:	Antigen affinity purification
Conjugation:	Unconjugated
Storage:	Store at -20°C.
Stability:	1 year
Gene Name:	SUMO interacting motifs containing 1
Database Link:	Entrez Gene 375484 Human Q8NDZ2
Background:	SIMC1 (SUMO Interacting Motifs Containing 1) is a Protein Coding gene. Gene Ontology (GO) annotations related to this gene include SUMO polymer binding. An important paralog of this gene is SKIDA1.
Synonyms:	4732471D19Rik

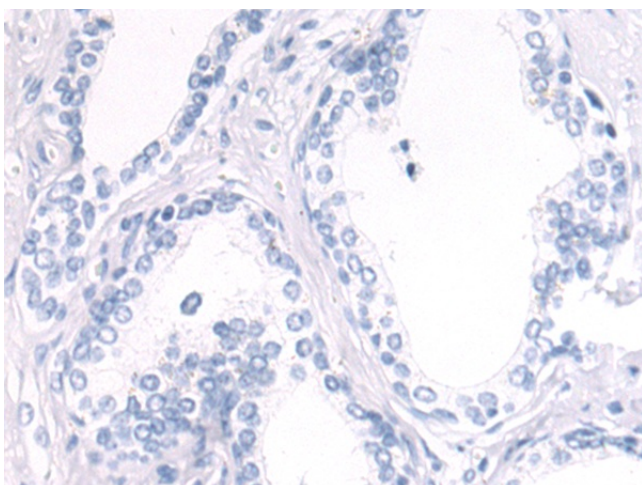


[View online »](#)

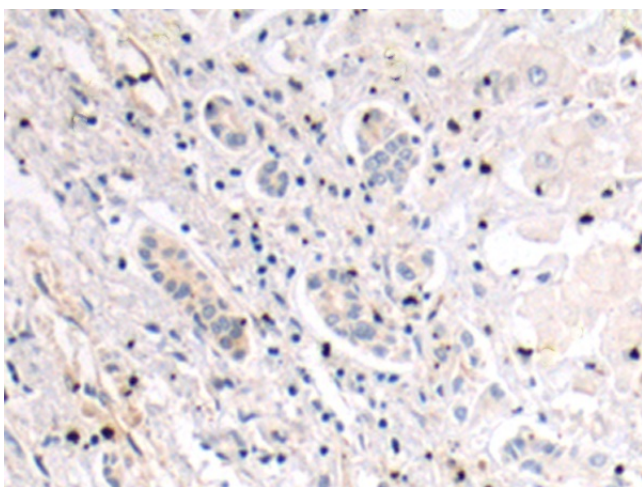
Product images:



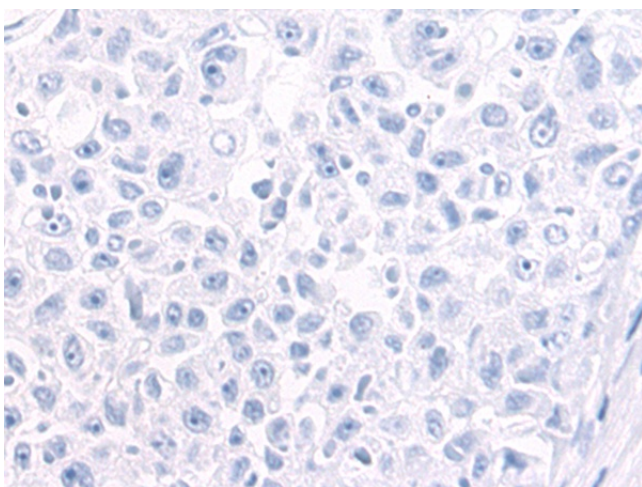
Immunohistochemistry of paraffin-embedded Human prostate cancer tissue using TA371085 (SIMC1 Antibody) at dilution 1/50 (Original magnification: ×200)



Immunohistochemistry of paraffin-embedded Human prostate cancer tissue using TA371085 (SIMC1 Antibody) at dilution 1/50, treated with fusion protein. (Original magnification: ×200)



Immunohistochemistry of paraffin-embedded Human liver cancer tissue using TA371085 (SIMC1 Antibody) at dilution 1/50 (Original magnification: ×200)



Immunohistochemistry of paraffin-embedded Human liver cancer tissue using TA371085 (SIMC1 Antibody) at dilution 1/50, treated with fusion protein. (Original magnification: ×200)