

Product datasheet for **TA371083**

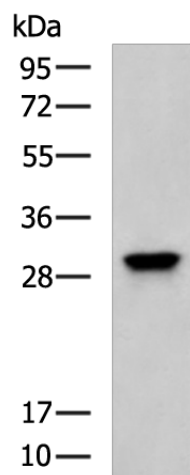
TMEM38B Rabbit Polyclonal Antibody

Product data:

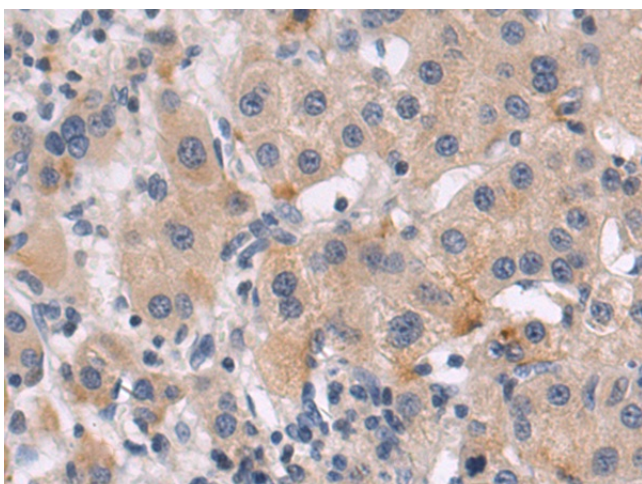
Product Type:	Primary Antibodies
Applications:	IHC, WB
Recommended Dilution:	WB: 500-2000 WB positive control: K562 cell lysate IHC: 50-100 Positive control: Human liver cancer Predicted cell location: Cytoplasm
Reactivity:	Human
Host:	Rabbit
Isotype:	IgG
Clonality:	Polyclonal
Immunogen:	Fusion protein of human TMEM38B
Formulation:	pH7.4 PBS, 0.05% NaN ₃ , 40% Glycerol
Concentration:	lot specific
Purification:	Antigen affinity purification
Conjugation:	Unconjugated
Storage:	Store at -20°C.
Stability:	1 year
Predicted Protein Size:	33 kDa
Gene Name:	transmembrane protein 38B
Database Link:	Entrez Gene 55151 Human Q9NVV0
Background:	This gene encodes an intracellular monovalent cation channel that functions in maintenance of intracellular calcium release. Mutations in this gene may be associated with autosomal recessive osteogenesis.
Synonyms:	bA219P18.1; C9orf87; D4Ert89e; FLJ10493; TRIC-B; TRICB



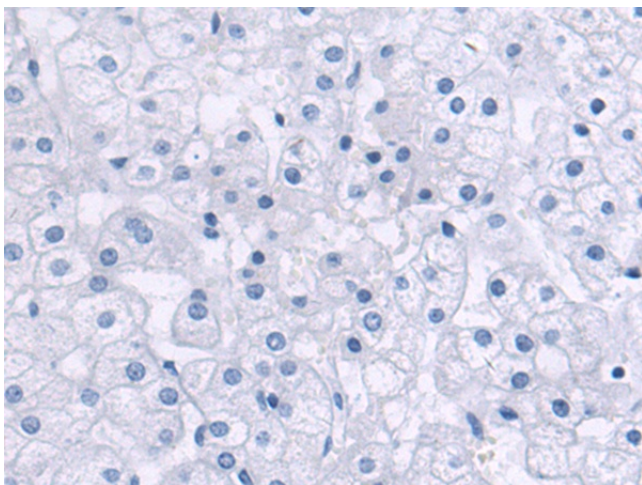
[View online »](#)

Product images:

Gel: 12%SDS-PAGE
Lysate: 40 μ g
Lane: K562 cell lysate
Primary antibody: TA371083 (TMEM38B Antibody) at dilution 1/600
Secondary antibody: Goat anti rabbit IgG at 1/5000 dilution
Exposure time: 1 minute



Immunohistochemistry of paraffin-embedded Human liver cancer tissue using TA371083 (TMEM38B Antibody) at dilution 1/50 (Original magnification: \times 200)



Immunohistochemistry of paraffin-embedded Human liver cancer tissue using TA371083 (TMEM38B Antibody) at dilution 1/50, treated with fusion protein. (Original magnification: $\times 200$)