

Product datasheet for **TA371081**

Shwachman Bodian Diamond syndrome (SBDS) Rabbit Polyclonal Antibody

Product data:

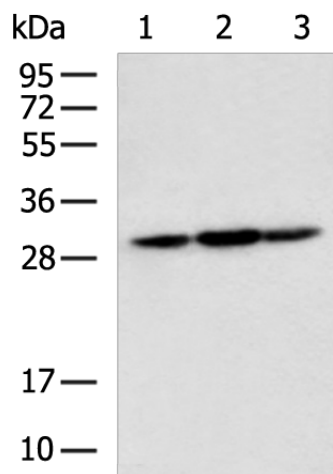
Product Type:	Primary Antibodies
Applications:	IHC, WB
Recommended Dilution:	WB: 500-2000 WB positive control: Hela, HepG2, 293T cell lysates IHC: 50-100 Positive control: Human cervical cancer Predicted cell location: Cytoplasm
Reactivity:	Human, Mouse, Rat
Host:	Rabbit
Isotype:	IgG
Clonality:	Polyclonal
Immunogen:	Fusion protein of human SBDS
Formulation:	pH7.4 PBS, 0.05% NaN ₃ , 40% Glycerol
Concentration:	lot specific
Purification:	Antigen affinity purification
Conjugation:	Unconjugated
Storage:	Store at -20°C.
Stability:	1 year
Predicted Protein Size:	29 kDa
Gene Name:	SBDS ribosome assembly guanine nucleotide exchange factor
Database Link:	Entrez Gene 51119 Human Q9Y3A5
Background:	This gene encodes a highly conserved protein that plays an essential role in ribosome biogenesis. The encoded protein interacts with elongation factor-like GTPase 1 to disassociate eukaryotic initiation factor 6 from the late cytoplasmic pre-60S ribosomal subunit allowing assembly of the 80S subunit. Mutations within this gene are associated with the autosomal recessive disorder Shwachman-Bodian-Diamond syndrome. This gene has a closely linked pseudogene that is distally located.



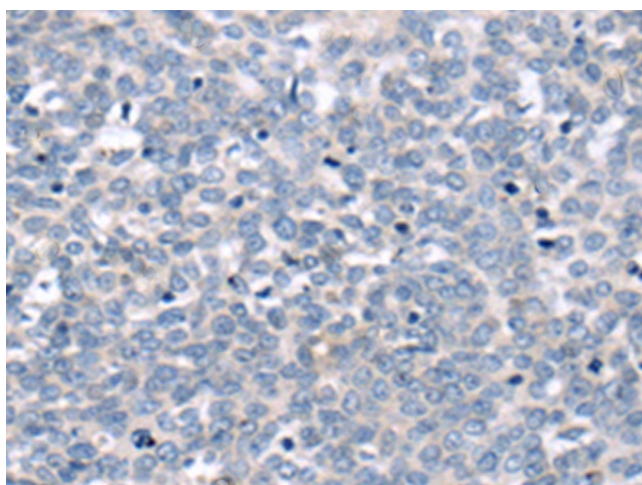
[View online »](#)

Synonyms: CGI-97; FLJ10917; SDS; SWDS

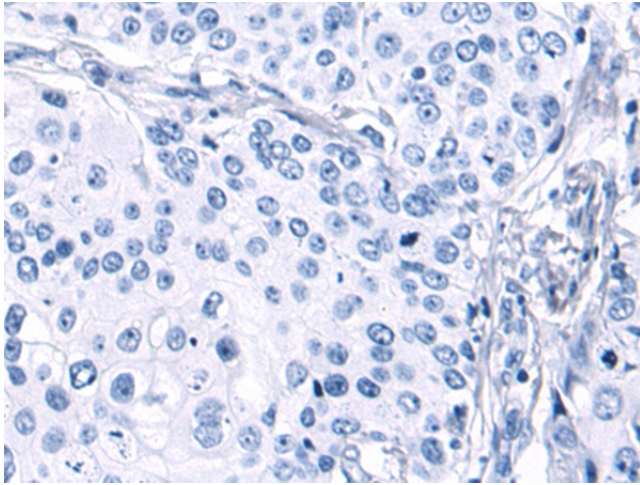
Product images:



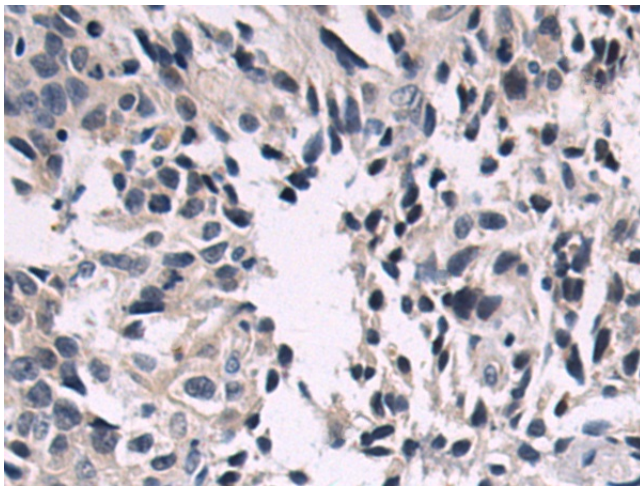
Gel: 12%SDS-PAGE
 Lysate: 40 µg
 Lane 1-3: HeLa
 HepG2
 293T cell lysates
 Primary antibody: TA371081 (SBDS Antibody) at
 dilution 1/700
 Secondary antibody: Goat anti rabbit IgG at
 1/5000 dilution
 Exposure time: 30 seconds



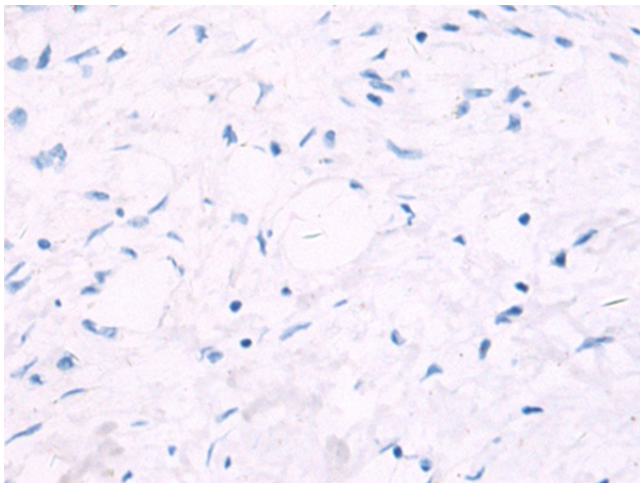
Immunohistochemistry of paraffin-embedded
 Human cervical cancer tissue using TA371081
 (SBDS Antibody) at dilution 1/65 (Original
 magnification: ×200)



Immunohistochemistry of paraffin-embedded Human cervical cancer tissue using TA371081 (SBDS Antibody) at dilution 1/65, treated with fusion protein. (Original magnification: $\times 200$)



Immunohistochemistry of paraffin-embedded Human gastric cancer tissue using TA371081 (SBDS Antibody) at dilution 1/65 (Original magnification: $\times 200$)



Immunohistochemistry of paraffin-embedded Human gastric cancer tissue using TA371081 (SBDS Antibody) at dilution 1/65, treated with fusion protein. (Original magnification: $\times 200$)