

## Product datasheet for **TA371078S**

### LXR alpha (NR1H3) Rabbit Polyclonal Antibody

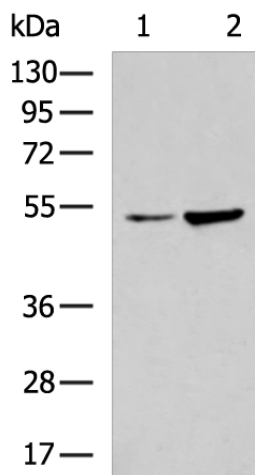
#### Product data:

Product Type:	Primary Antibodies
Applications:	WB
Recommended Dilution:	WB: 500-2000 WB positive control: Mouse kidney tissue, Mouse liver tissue lysates
Reactivity:	Human, Mouse
Host:	Rabbit
Isotype:	IgG
Clonality:	Polyclonal
Immunogen:	Fusion protein of human NR1H3
Formulation:	pH7.4 PBS, 0.05% NaN <sub>3</sub> , 40% Glycerol
Purification:	Antigen affinity purification
Conjugation:	Unconjugated
Storage:	Store at -20°C.
Stability:	1 year
Predicted Protein Size:	50 kDa
Gene Name:	nuclear receptor subfamily 1 group H member 3
Database Link:	<a href="#">Entrez Gene 10062 Human Q13133</a>
Background:	The protein encoded by this gene belongs to the NR1 subfamily of the nuclear receptor superfamily. The NR1 family members are key regulators of macrophage function, controlling transcriptional programs involved in lipid homeostasis and inflammation. This protein is highly expressed in visceral organs, including liver, kidney and intestine. It forms a heterodimer with retinoid X receptor (RXR), and regulates expression of target genes containing retinoid response elements. Studies in mice lacking this gene suggest that it may play an important role in the regulation of cholesterol homeostasis. Alternatively spliced transcript variants encoding different isoforms have been found for this gene.
Synonyms:	LXR-a; LXRA; OTTHUMP00000198038; RLD-1



[View online »](#)

## Product images:



Gel: 8%SDS-PAGE

Lysate: 40  $\mu$ g

Lane 1-2: Mouse kidney tissue

Mouse liver tissue lysates

Primary antibody: [TA371078] (NR1H3 Antibody)  
at dilution 1/500

Secondary antibody: Goat anti rabbit IgG at  
1/5000 dilution

Exposure time: 1 minute