

## Product datasheet for **TA371074S**

### NETO2 Rabbit Polyclonal Antibody

#### Product data:

Product Type:	Primary Antibodies
Applications:	IHC, WB
Recommended Dilution:	WB: 500-2000 WB positive control: Human cerebrum tissue, Human cerebella tissue lysates IHC: 50-200 Positive control: Human esophagus cancer Predicted cell location: Cytoplasm and Cell membrane
Reactivity:	Human, Mouse, Rat
Host:	Rabbit
Isotype:	IgG
Clonality:	Polyclonal
Immunogen:	Fusion protein of human NETO2
Formulation:	pH7.4 PBS, 0.05% NaN <sub>3</sub> , 40% Glycerol
Purification:	Antigen affinity purification
Conjugation:	Unconjugated
Storage:	Store at -20°C.
Stability:	1 year
Predicted Protein Size:	59 kDa
Gene Name:	neuropilin and tolloid like 2
Database Link:	<a href="#">Entrez Gene 81831 Human Q8NC67</a>

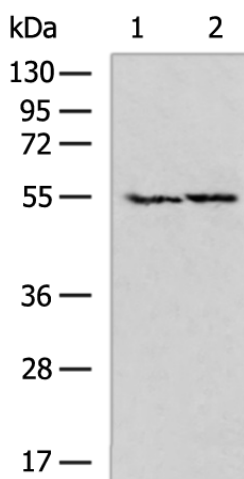
**Background:** This gene encodes a predicted transmembrane protein containing two extracellular CUB domains followed by a low-density lipoprotein class A (LDLa) domain. A similar gene in rats encodes a protein that modulates glutamate signaling in the brain by regulating kainate receptor function. Expression of this gene may be a biomarker for proliferating infantile hemangiomas. A pseudogene of this gene is located on the long arm of chromosome 8. Alternatively spliced transcript variants encoding multiple isoforms have been observed for this gene.



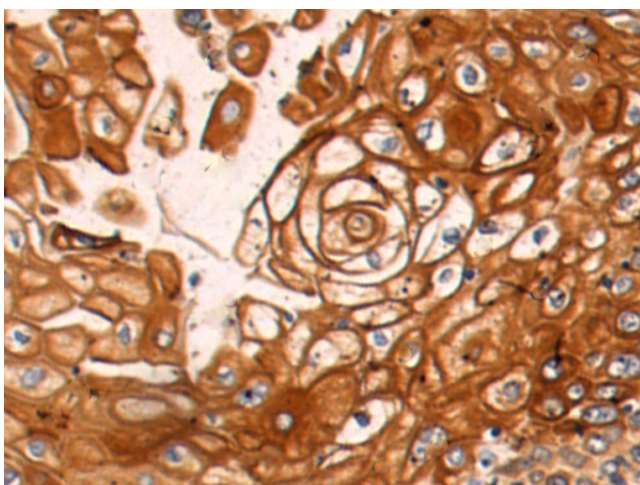
[View online »](#)

Synonyms: BTCL2; FLJ10430; FLJ14724; FLJ90456; NEOT2

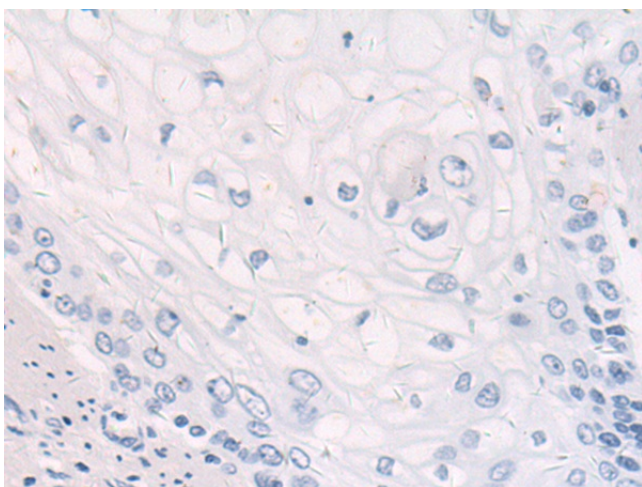
**Product images:**



Gel: 8%SDS-PAGE  
 Lysate: 40 µg  
 Lane 1-2: Human cerebrum tissue  
 Human cerebella tissue lysates  
 Primary antibody: [TA371074] (NETO2 Antibody)  
 at dilution 1/700  
 Secondary antibody: Goat anti rabbit IgG at  
 1/5000 dilution  
 Exposure time: 1 minute



Immunohistochemistry of paraffin-embedded  
 Human esophagus cancer tissue using  
 [TA371074] (NETO2 Antibody) at dilution 1/50  
 (Original magnification: ×200)



Immunohistochemistry of paraffin-embedded Human esophagus cancer tissue using [TA371074] (NETO2 Antibody) at dilution 1/50, treated with fusion protein. (Original magnification:  $\times 200$ )