

## Product datasheet for **TA371061**

### SPG3A (ATL1) Rabbit Polyclonal Antibody

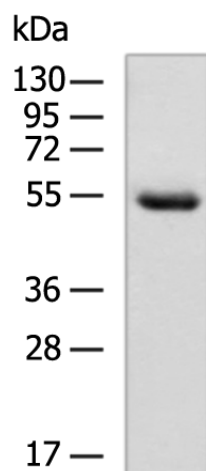
#### Product data:

Product Type:	Primary Antibodies
Applications:	WB
Recommended Dilution:	WB: 500-2000 WB positive control: Human breast tissue lysate
Reactivity:	Human, Mouse, Rat
Host:	Rabbit
Isotype:	IgG
Clonality:	Polyclonal
Immunogen:	Fusion protein of human ATL1
Formulation:	pH7.4 PBS, 0.05% NaN <sub>3</sub> , 40% Glycerol
Concentration:	lot specific
Purification:	Antigen affinity purification
Conjugation:	Unconjugated
Storage:	Store at -20°C.
Stability:	1 year
Predicted Protein Size:	64 kDa
Gene Name:	atlastin GTPase 1
Database Link:	<a href="#">Entrez Gene 51062 Human Q8WXF7</a>
Background:	The protein encoded by this gene is a GTPase and a Golgi body transmembrane protein. The encoded protein can form a homotetramer and has been shown to interact with spastin and with mitogen-activated protein kinase kinase kinase 4. This protein may be involved in axonal maintenance as evidenced by the fact that defects in this gene are a cause of spastic paraplegia type 3. Three transcript variants encoding two different isoforms have been found for this gene.
Synonyms:	AD-FSP; atlastin-1; atlastin1; FSP1; GBP-3; GBP3; hGBP3; SPG3; SPG3A



[View online »](#)

## Product images:



Gel: 8%SDS-PAGE

Lysate: 40  $\mu$ g

Lane: Human breast tissue lysate

Primary antibody: TA371061 (ATL1 Antibody) at dilution 1/550

Secondary antibody: Goat anti rabbit IgG at 1/5000 dilution

Exposure time: 90 seconds