

Product datasheet for **TA371056S**

STIP1 Rabbit Polyclonal Antibody

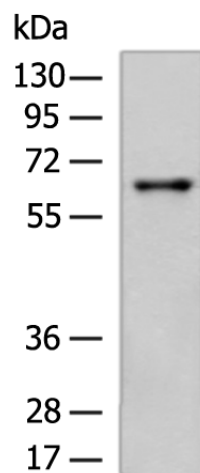
Product data:

Product Type:	Primary Antibodies
Applications:	IHC, WB
Recommended Dilution:	WB: 500-2000 WB positive control: Jurkat cell lysate IHC: 100-300 Positive control: Human liver cancer Predicted cell location: Nucleus
Reactivity:	Human, Mouse, Rat
Host:	Rabbit
Isotype:	IgG
Clonality:	Polyclonal
Immunogen:	Fusion protein of human STIP1
Formulation:	pH7.4 PBS, 0.05% NaN ₃ , 40% Glycerol
Purification:	Antigen affinity purification
Conjugation:	Unconjugated
Storage:	Store at -20°C.
Stability:	1 year
Predicted Protein Size:	63 kDa
Gene Name:	stress induced phosphoprotein 1
Database Link:	Entrez Gene 10963 Human P31948
Background:	STIP1 is an adaptor protein that coordinates the functions of HSP70 (see HSPA1A; MIM 140550) and HSP90 (see HSP90AA1; MIM 140571) in protein folding. It is thought to assist in the transfer of proteins from HSP70 to HSP90 by binding both HSP90 and substrate-bound HSP70. STIP1 also stimulates the ATPase activity of HSP70 and inhibits the ATPase activity of HSP90, suggesting that it regulates both the conformations and ATPase cycles of these chaperones (Song and Masison, 2005 [PubMed 16100115]).
Synonyms:	HOP; IEF-SSP-3521; P60; STI1; STI1L

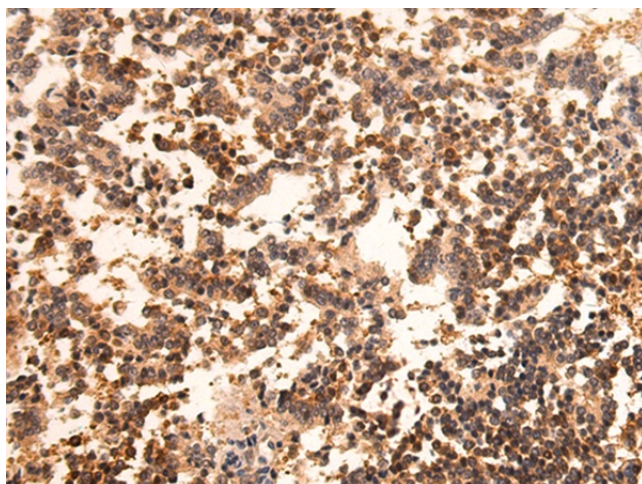


[View online »](#)

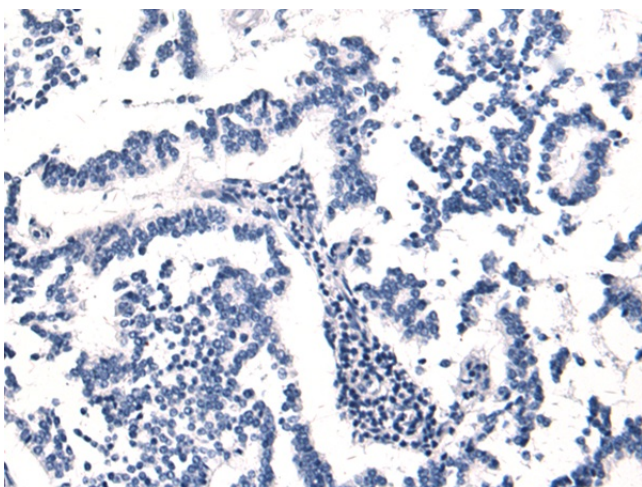
Product images:



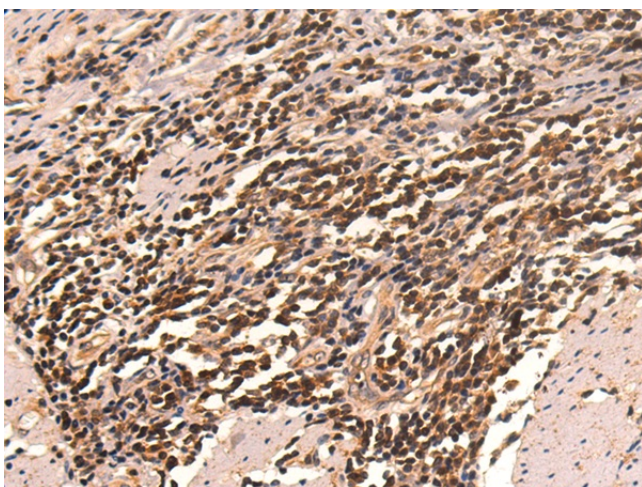
Gel: 8%SDS-PAGE
Lysate: 40 μ g
Lane: Jurkat cell lysate
Primary antibody: [TA371056] (STIP1 Antibody) at dilution 1/300
Secondary antibody: Goat anti rabbit IgG at 1/5000 dilution
Exposure time: 3 seconds



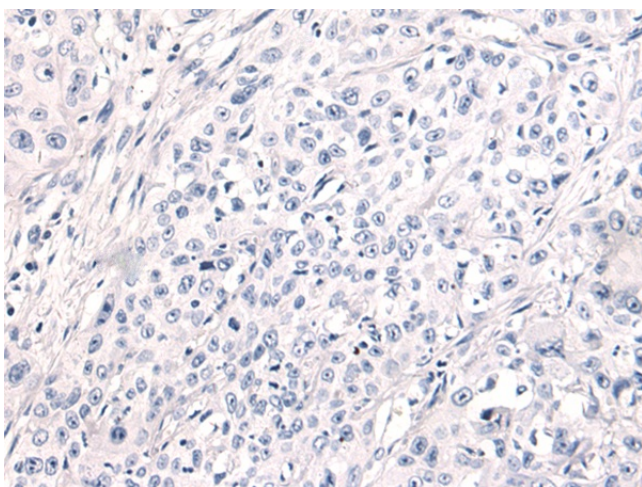
Immunohistochemistry of paraffin-embedded Human liver cancer tissue using [TA371056] (STIP1 Antibody) at dilution 1/50 (Original magnification: \times 200)



Immunohistochemistry of paraffin-embedded Human liver cancer tissue using [TA371056] (STIP1 Antibody) at dilution 1/50, treated with fusion protein. (Original magnification: $\times 200$)



Immunohistochemistry of paraffin-embedded Human esophagus cancer tissue using [TA371056] (STIP1 Antibody) at dilution 1/50 (Original magnification: $\times 200$)



Immunohistochemistry of paraffin-embedded Human esophagus cancer tissue using [TA371056] (STIP1 Antibody) at dilution 1/50, treated with fusion protein. (Original magnification: $\times 200$)