

Product datasheet for **TA371055**

TRPT1 Rabbit Polyclonal Antibody

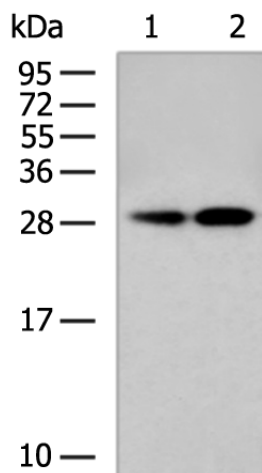
Product data:

Product Type:	Primary Antibodies
Applications:	IHC, WB
Recommended Dilution:	WB: 500-2000 WB positive control: Human tai omentum metastasis of ovarian cancer tissue, SKOV3 cell lysates IHC: 50-100 Positive control: Human cervical cancer Predicted cell location: Cytoplasm
Reactivity:	Human, Mouse
Host:	Rabbit
Isotype:	IgG
Clonality:	Polyclonal
Immunogen:	Fusion protein of human TRPT1
Formulation:	pH7.4 PBS, 0.05% NaN ₃ , 40% Glycerol
Concentration:	lot specific
Purification:	Antigen affinity purification
Conjugation:	Unconjugated
Storage:	Store at -20°C.
Stability:	1 year
Predicted Protein Size:	28 kDa
Gene Name:	tRNA phosphotransferase 1
Database Link:	Entrez Gene 83707 Human Q86TN4
Background:	Catalyzes the last step of tRNA splicing, the transfer of the splice junction 2'-phosphate from ligated tRNA to NAD to produce ADP-ribose 1''-2'' cyclic phosphate.
Synonyms:	MGC11134

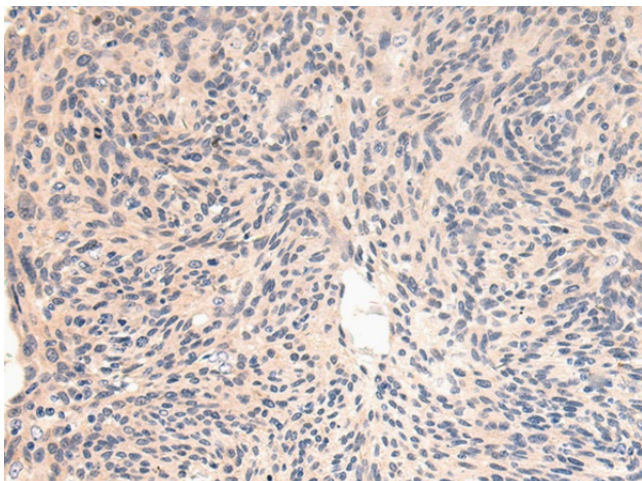


[View online »](#)

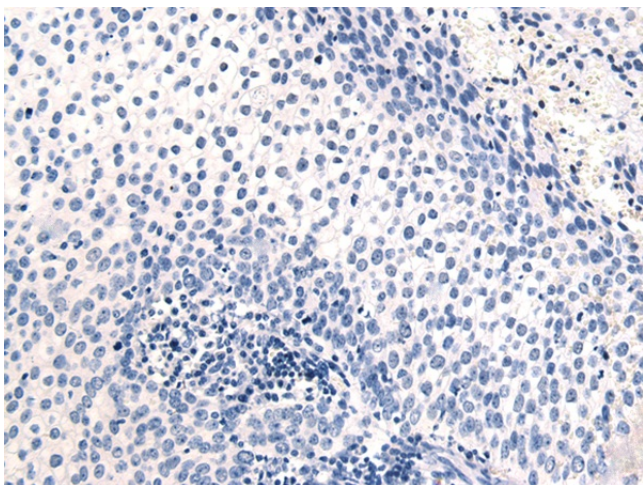
Product images:



Gel: 12%SDS-PAGE
Lysate: 40 μ g
Lane 1-2: Human tai omentum metastasis of ovarian cancer tissue
SKOV3 cell lysates
Primary antibody: TA371055 (TRPT1 Antibody) at dilution 1/300
Secondary antibody: Goat anti rabbit IgG at 1/5000 dilution
Exposure time: 5 minutes



Immunohistochemistry of paraffin-embedded Human cervical cancer tissue using TA371055 (TRPT1 Antibody) at dilution 1/50 (Original magnification: \times 200)



Immunohistochemistry of paraffin-embedded Human cervical cancer tissue using TA371055 (TRPT1 Antibody) at dilution 1/50, treated with fusion protein. (Original magnification: $\times 200$)