

## Product datasheet for **TA371053S**

### RPS7 Rabbit Polyclonal Antibody

#### Product data:

|                         |  |
|-------------------------|--|
| Product Type:           | Primary Antibodies   |
| Applications:           | IHC, WB  |
| Recommended Dilution:   | WB: 500-2000<br>WB positive control: A549 cell, Rat liver tissue, Mouse liver tissue, MCF-7 cell, NIH/3T3 cell, RAW264.7 cell lysates<br>IHC: 50-100<br>Positive control: Human gastric cancer<br>Predicted cell location: Cytoplasm |
| Reactivity:             | Human, Mouse, Rat  |
| Host:                   | Rabbit   |
| Isotype:                | IgG  |
| Clonality:              | Polyclonal   |
| Immunogen:              | Fusion protein of human RPS7   |
| Formulation:            | pH7.4 PBS, 0.05% NaN <sub>3</sub> , 40% Glycerol   |
| Purification:           | Antigen affinity purification  |
| Conjugation:            | Unconjugated   |
| Storage:                | Store at -20°C.  |
| Stability:              | 1 year   |
| Predicted Protein Size: | 22 kDa   |
| Gene Name:              | ribosomal protein S7   |
| Database Link:          | <a href="#">Entrez Gene 6201 Human P62081</a>  |

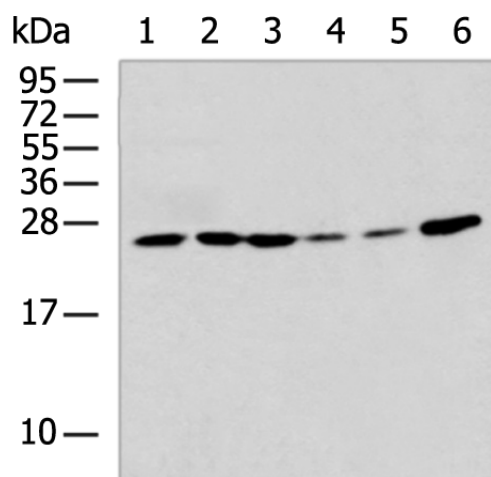
**Background:** Ribosomes, the organelles that catalyze protein synthesis, consist of a small 40S subunit and a large 60S subunit. Together these subunits are composed of 4 RNA species and approximately 80 structurally distinct proteins. This gene encodes a ribosomal protein that is a component of the 40S subunit. The protein belongs to the S7E family of ribosomal proteins. It is located in the cytoplasm. As is typical for genes encoding ribosomal proteins, there are multiple processed pseudogenes of this gene dispersed through the genome.



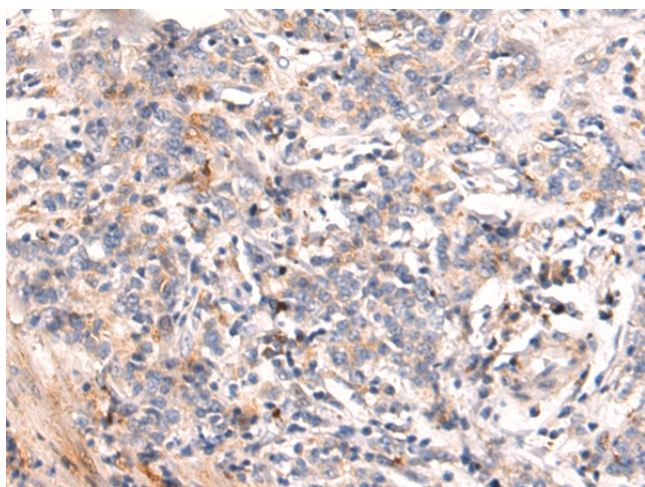
[View online »](#)

Synonyms: DBA8; OTTHUMP00000200057; OTTHUMP00000200058

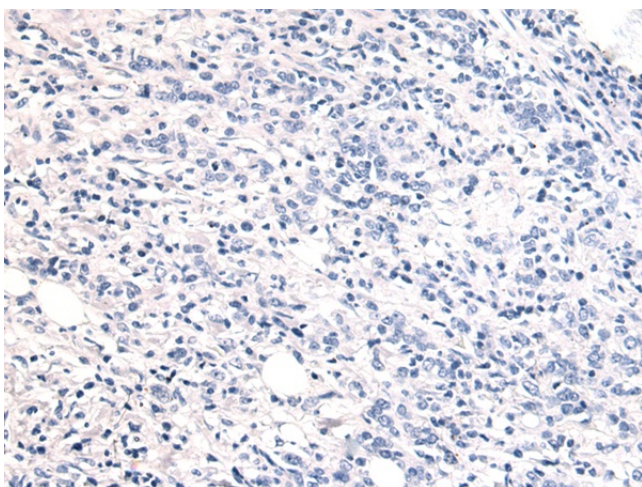
**Product images:**



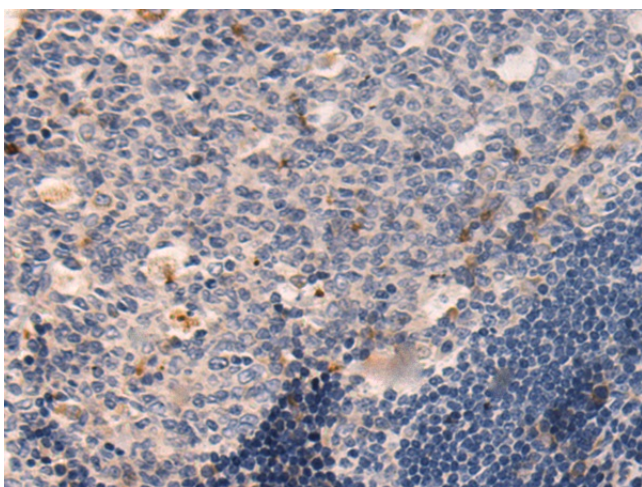
Gel: 12%SDS-PAGE  
 Lysate: 40 µg  
 Lane 1-6: A549 cell  
 Rat liver tissue  
 Mouse liver tissue  
 MCF-7 cell  
 NIH/3T3 cell  
 RAW264.7 cell lysates  
 Primary antibody: [TA371053] (RPS7 Antibody) at dilution 1/600  
 Secondary antibody: Goat anti rabbit IgG at 1/5000 dilution  
 Exposure time: 10 seconds



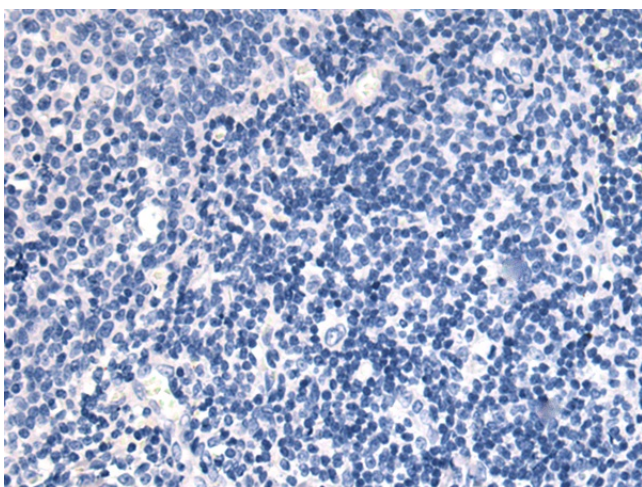
Immunohistochemistry of paraffin-embedded Human gastric cancer tissue using [TA371053] (RPS7 Antibody) at dilution 1/50 (Original magnification: ×200)



Immunohistochemistry of paraffin-embedded Human gastric cancer tissue using [TA371053] (RPS7 Antibody) at dilution 1/50, treated with fusion protein. (Original magnification: ×200)



Immunohistochemistry of paraffin-embedded Human tonsil tissue using [TA371053] (RPS7 Antibody) at dilution 1/50 (Original magnification: ×200)



Immunohistochemistry of paraffin-embedded Human tonsil tissue using [TA371053] (RPS7 Antibody) at dilution 1/50, treated with fusion protein. (Original magnification: ×200)