

## Product datasheet for **TA371051S**

### Ribosomal protein S10 (RPS10) Rabbit Polyclonal Antibody

#### Product data:

|                         |  |
|-------------------------|--|
| Product Type:           | Primary Antibodies   |
| Applications:           | IHC, WB  |
| Recommended Dilution:   | WB: 500-2000<br>WB positive control: K562 and Raji cell lysates<br>IHC: 50-200<br>Positive control: Human tonsil<br>Predicted cell location: Cytoplasm |
| Reactivity:             | Human, Mouse, Rat  |
| Host:                   | Rabbit   |
| Isotype:                | IgG  |
| Clonality:              | Polyclonal   |
| Immunogen:              | Fusion protein of human RPS10  |
| Formulation:            | pH7.4 PBS, 0.05% NaN <sub>3</sub> , 40% Glycerol   |
| Purification:           | Antigen affinity purification  |
| Conjugation:            | Unconjugated   |
| Storage:                | Store at -20°C.  |
| Stability:              | 1 year   |
| Predicted Protein Size: | 19 kDa   |
| Gene Name:              | ribosomal protein S10  |
| Database Link:          | <a href="#">Entrez Gene 6204 Human P46783</a>  |



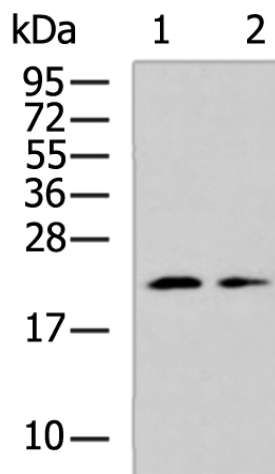
[View online »](#)

**Background:**

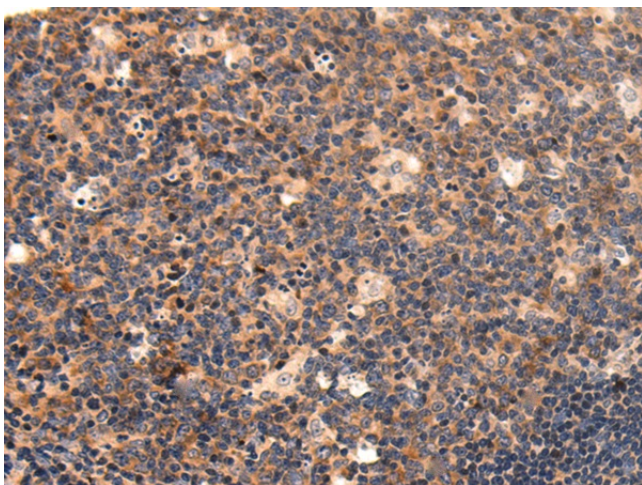
Ribosomes, the organelles that catalyze protein synthesis, consist of a small 40S subunit and a large 60S subunit. Together these subunits are composed of 4 RNA species and approximately 80 structurally distinct proteins. This gene encodes a ribosomal protein that is a component of the 40S subunit. The protein belongs to the S10E family of ribosomal proteins. It is located in the cytoplasm. Variable expression of this gene in colorectal cancers compared to adjacent normal tissues has been observed, although no correlation between the level of expression and the severity of the disease has been found. As is typical for genes encoding ribosomal proteins, there are multiple processed pseudogenes of this gene dispersed through the genome. Alternate splicing results in multiple transcript variants that encode the same protein. Naturally occurring read-through transcription occurs between this locus and the neighboring locus NUDT3 (nudix (nucleoside diphosphate linked moiety X)-type motif 3).

**Synonyms:**

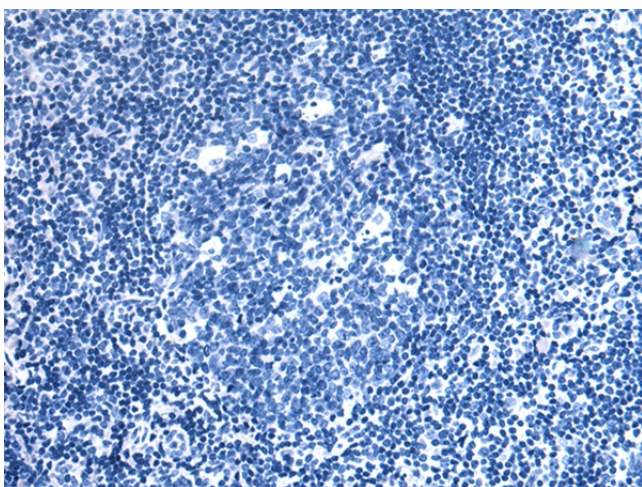
MGC88819

**Product images:**

Gel: 12%SDS-PAGE  
Lysate: 40 µg  
Lane 1-2: K562 and Raji cell lysates  
Primary antibody: [TA371051] (RPS10 Antibody)  
at dilution 1/1000  
Secondary antibody: Goat anti rabbit IgG at  
1/5000 dilution  
Exposure time: 40 seconds



Immunohistochemistry of paraffin-embedded Human tonsil tissue using [TA371051] (RPS10 Antibody) at dilution 1/70 (Original magnification: ×200)



Immunohistochemistry of paraffin-embedded Human tonsil tissue using [TA371051] (RPS10 Antibody) at dilution 1/70, treated with fusion protein. (Original magnification: ×200)