

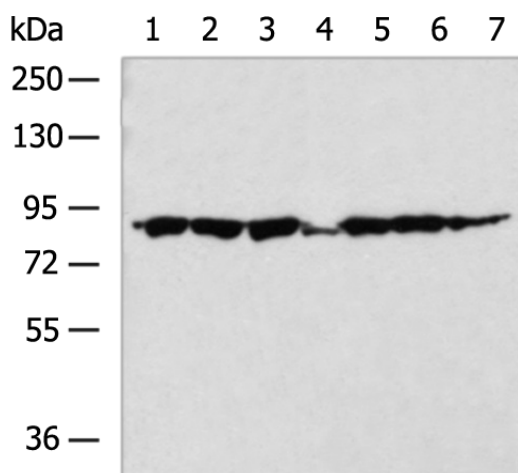
Product datasheet for **TA371048**

ZNF184 Rabbit Polyclonal Antibody

Product data:

Product Type:	Primary Antibodies
Applications:	IHC, WB
Recommended Dilution:	WB: 1000-5000 WB positive control: RAMOS, Raji, A375 cell, Rat liver tissue, LO2, 293T, Jurkat cell lysates IHC: 100-300 Positive control: Human cervical cancer Predicted cell location: Nucleus
Reactivity:	Human, Rat
Host:	Rabbit
Isotype:	IgG
Clonality:	Polyclonal
Immunogen:	Fusion protein of human ZNF184
Formulation:	pH7.4 PBS, 0.05% NaN ₃ , 40% Glycerol
Concentration:	lot specific
Purification:	Antigen affinity purification
Conjugation:	Unconjugated
Storage:	Store at -20°C.
Stability:	1 year
Predicted Protein Size:	86 kDa
Gene Name:	zinc finger protein 184
Database Link:	Entrez Gene 7738 Human Q99676
Background:	The protein encoded by this gene is predicted to be a Kruppel C2H2-type zinc-finger protein family member. Sequence analysis predicts that the protein contains two Kruppel associated box (KRAB) boxes in the N-terminus and highly conserved zinc finger motifs at the C-terminus. Alternative splicing results in multiple transcript variants.
Synonyms:	OTTHUMP00000016181


[View online »](#)

Product images:


Gel: 6%SDS-PAGE

Lysate: 40 µg

Lane 1-7: RAMOS

Raji

A375 cell

Rat liver tissue

LO2

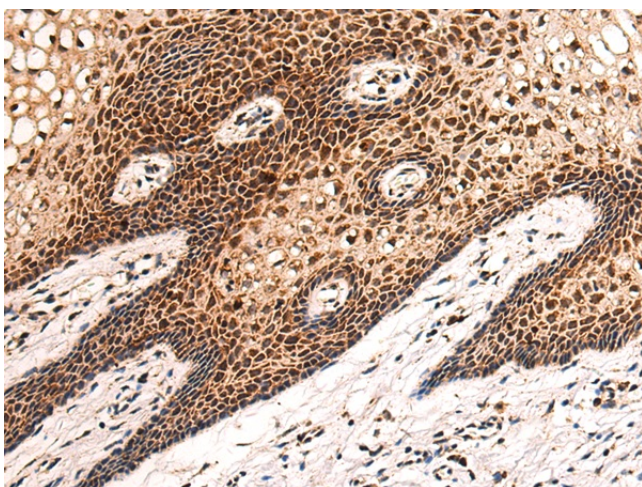
293T

Jurkat cell lysates

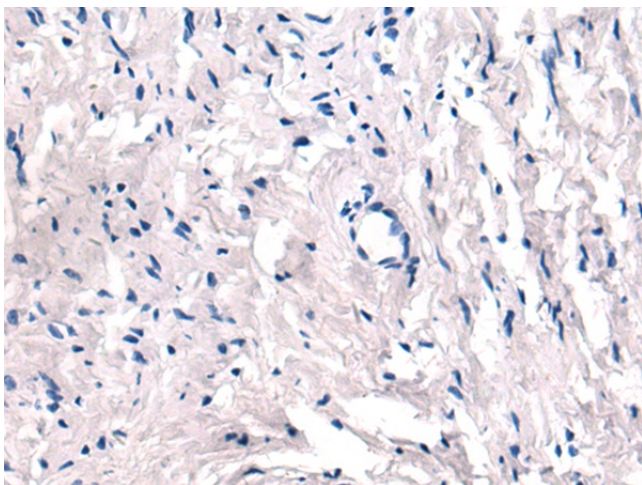
Primary antibody: TA371048 (ZNF184 Antibody)
at dilution 1/1000

Secondary antibody: Goat anti rabbit IgG at
1/5000 dilution

Exposure time: 2 minutes



Immunohistochemistry of paraffin-embedded
Human cervical cancer tissue using TA371048
(ZNF184 Antibody) at dilution 1/105 (Original
magnification: ×200)



Immunohistochemistry of paraffin-embedded Human cervical cancer tissue using TA371048 (ZNF184 Antibody) at dilution 1/105, treated with fusion protein. (Original magnification: ×200)