

## Product datasheet for **TA371047**

### LETM1 Rabbit Polyclonal Antibody

#### Product data:

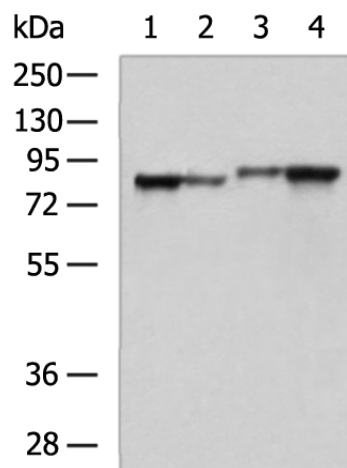
Product Type:	Primary Antibodies
Applications:	IHC, WB
Recommended Dilution:	WB: 1000-5000 WB positive control: A549 cell, Rat liver tissue, Mouse liver tissue, LO2 cell lysates IHC: 100-200 Positive control: Human breast cancer Predicted cell location: Cytoplasm
Reactivity:	Human, Mouse, Rat
Host:	Rabbit
Isotype:	IgG
Clonality:	Polyclonal
Immunogen:	Fusion protein of human LETM1
Formulation:	pH7.4 PBS, 0.05% NaN <sub>3</sub> , 40% Glycerol
Concentration:	lot specific
Purification:	Antigen affinity purification
Conjugation:	Unconjugated
Storage:	Store at -20°C.
Stability:	1 year
Predicted Protein Size:	83 kDa
Gene Name:	leucine zipper and EF-hand containing transmembrane protein 1
Database Link:	<a href="#">Entrez Gene 3954 Human O95202</a>
Background:	This gene encodes a protein that is localized to the inner mitochondrial membrane. The protein functions to maintain the mitochondrial tubular shapes and is required for normal mitochondrial morphology and cellular viability. Mutations in this gene cause Wolf-Hirschhorn syndrome, a complex malformation syndrome caused by the deletion of parts of the distal short arm of chromosome 4. Related pseudogenes have been identified on chromosomes 8, 15 and 19.



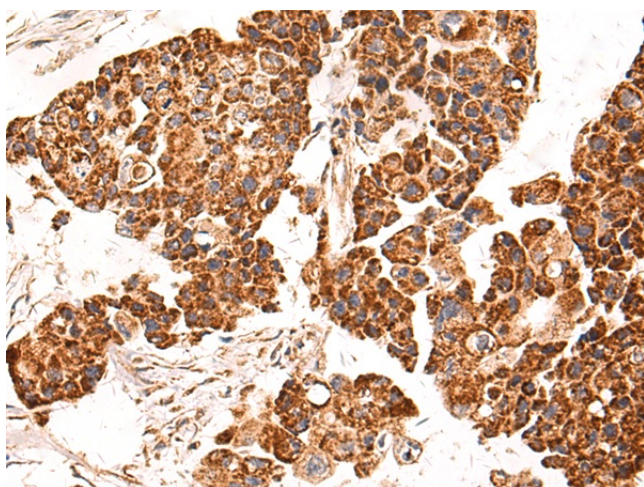
[View online »](#)

Synonyms: LETM1

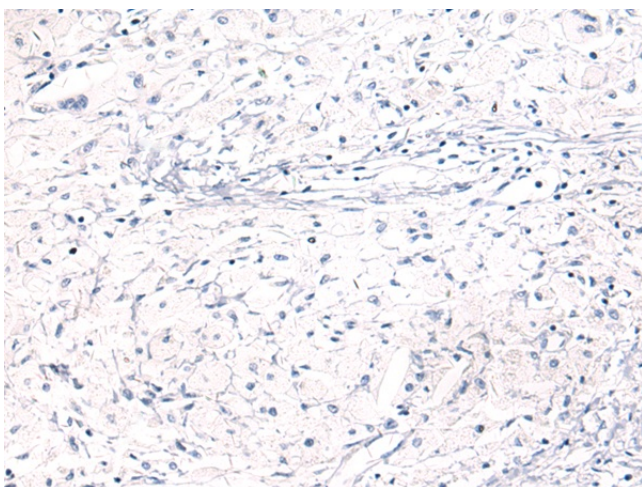
### Product images:



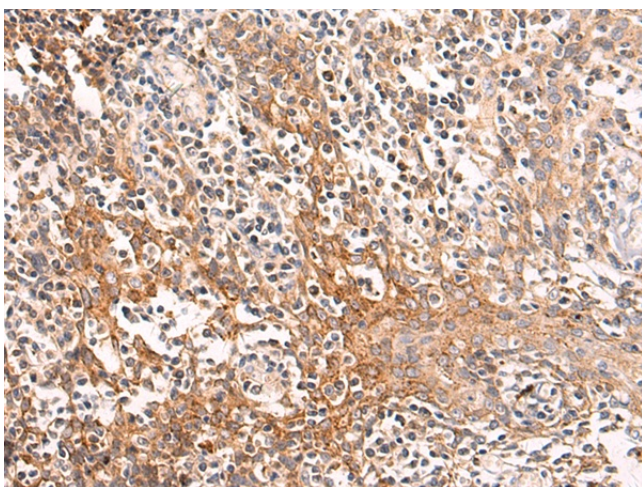
Gel: 8%SDS-PAGE  
Lysate: 40  $\mu$ g  
Lane 1-4: A549 cell  
Rat liver tissue  
Mouse liver tissue  
LO2 cell lysates  
Primary antibody: TA371047 (LETM1 Antibody) at dilution 1/900  
Secondary antibody: Goat anti rabbit IgG at 1/5000 dilution  
Exposure time: 1 second



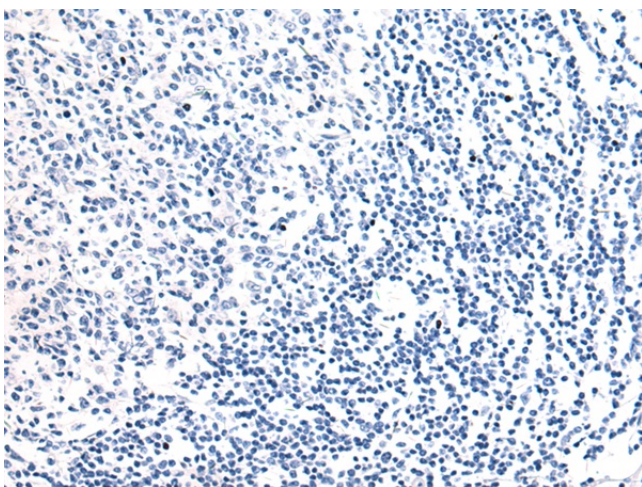
Immunohistochemistry of paraffin-embedded Human breast cancer tissue using TA371047 (LETM1 Antibody) at dilution 1/100 (Original magnification:  $\times 200$ )



Immunohistochemistry of paraffin-embedded Human breast cancer tissue using TA371047 (LETM1 Antibody) at dilution 1/100, treated with fusion protein. (Original magnification: x200)



Immunohistochemistry of paraffin-embedded Human tonsil tissue using TA371047 (LETM1 Antibody) at dilution 1/100 (Original magnification: x200)



Immunohistochemistry of paraffin-embedded Human tonsil tissue using TA371047 (LETM1 Antibody) at dilution 1/100, treated with fusion protein. (Original magnification: x200)