

Product datasheet for **TA371045**

RASGRP3 Rabbit Polyclonal Antibody

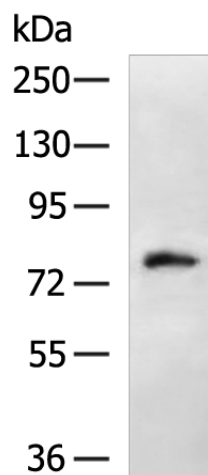
Product data:

Product Type:	Primary Antibodies
Applications:	IHC, WB
Recommended Dilution:	WB: 500-2000 WB positive control: 231 cell lysate IHC: 100-300 Positive control: Human liver cancer Predicted cell location: Cytoplasm
Reactivity:	Human
Host:	Rabbit
Isotype:	IgG
Clonality:	Polyclonal
Immunogen:	Fusion protein of human RASGRP3
Formulation:	pH7.4 PBS, 0.05% NaN ₃ , 40% Glycerol
Concentration:	lot specific
Purification:	Antigen affinity purification
Conjugation:	Unconjugated
Storage:	Store at -20°C.
Stability:	1 year
Predicted Protein Size:	78 kDa
Gene Name:	RAS guanyl releasing protein 3
Database Link:	Entrez Gene 25780 Human Q8IV61
Background:	The protein encoded by this gene is a guanine nucleotide exchange factor that activates the oncogenes HRAS and RAP1A. Defects in this gene have been associated with systemic lupus erythematosus and several cancers.
Synonyms:	GRP3; KIAA0846

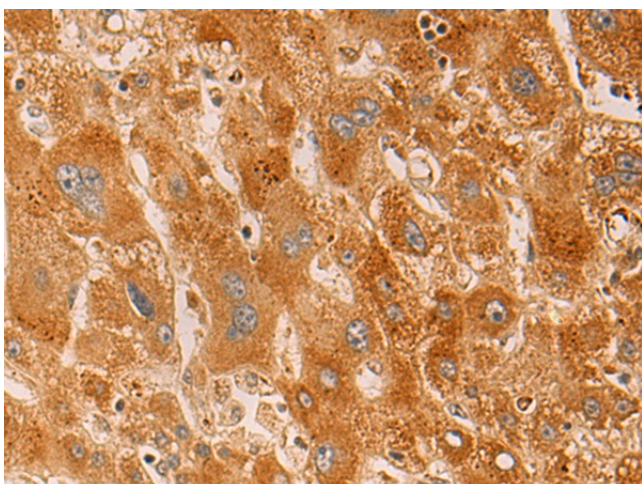


[View online »](#)

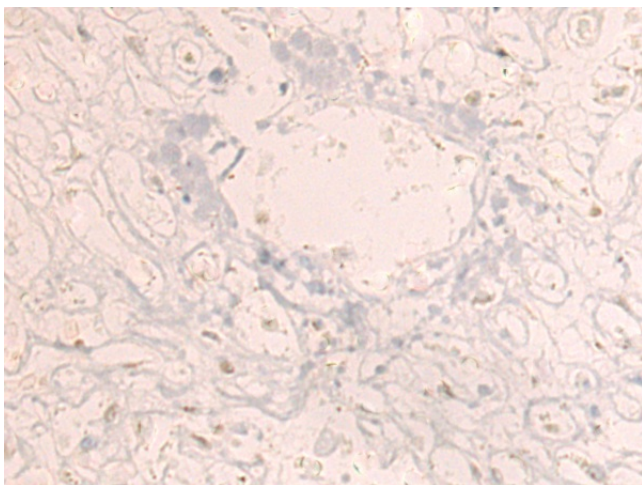
Product images:



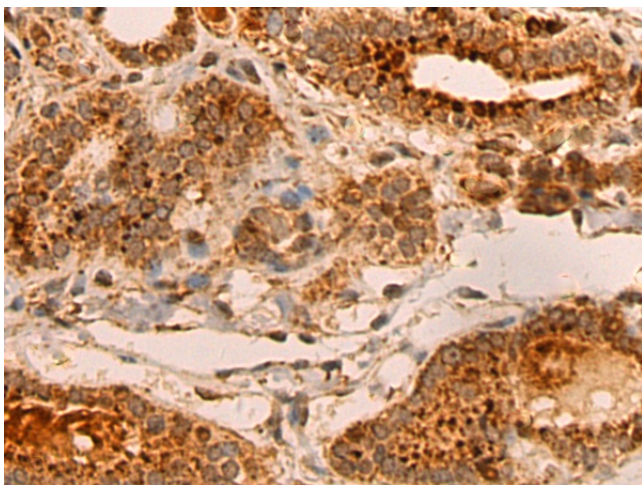
Gel: 6%SDS-PAGE
Lysate: 40 μ g
Lane: 231 cell lysate
Primary antibody: TA371045 (RASGRP3 Antibody) at dilution 1/600
Secondary antibody: Goat anti rabbit IgG at 1/5000 dilution
Exposure time: 2 minutes



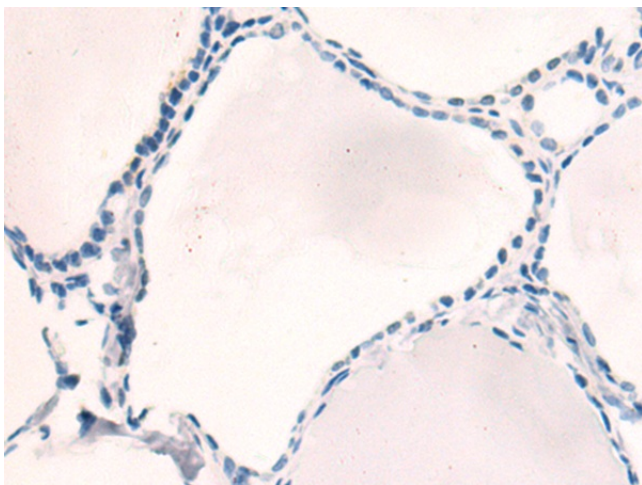
Immunohistochemistry of paraffin-embedded Human liver cancer tissue using TA371045 (RASGRP3 Antibody) at dilution 1/85 (Original magnification: \times 200)



Immunohistochemistry of paraffin-embedded Human liver cancer tissue using TA371045 (RASGRP3 Antibody) at dilution 1/85, treated with fusion protein. (Original magnification: x200)



Immunohistochemistry of paraffin-embedded Human thyroid cancer tissue using TA371045 (RASGRP3 Antibody) at dilution 1/85 (Original magnification: x200)



Immunohistochemistry of paraffin-embedded Human thyroid cancer tissue using TA371045 (RASGRP3 Antibody) at dilution 1/85, treated with fusion protein. (Original magnification: x200)