

Product datasheet for **TA371041**

SHCBP1 Rabbit Polyclonal Antibody

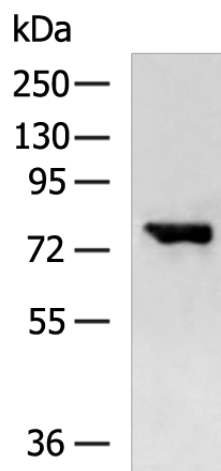
Product data:

Product Type:	Primary Antibodies
Applications:	IHC, WB
Recommended Dilution:	WB: 500-2000 WB positive control: Hela cell lysate IHC: 50-200 Positive control: Human tonsil Predicted cell location: Cytoplasm
Reactivity:	Human
Host:	Rabbit
Isotype:	IgG
Clonality:	Polyclonal
Immunogen:	Fusion protein of human SHCBP1
Formulation:	pH7.4 PBS, 0.05% NaN ₃ , 40% Glycerol
Concentration:	lot specific
Purification:	Antigen affinity purification
Conjugation:	Unconjugated
Storage:	Store at -20°C.
Stability:	1 year
Predicted Protein Size:	76 kDa
Gene Name:	SHC binding and spindle associated 1
Database Link:	Entrez Gene 79801 Human Q8NEM2
Background:	May play a role in signaling pathways governing cellular proliferation, cell growth and differentiation. May be a component of a novel signaling pathway downstream of Shc. Acts as a positive regulator of FGF signaling in neural progenitor cells.
Synonyms:	FLJ22009; MGC26900; PAL

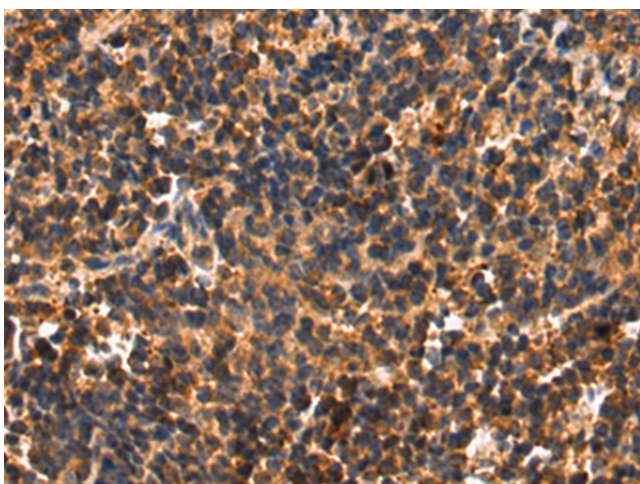


[View online »](#)

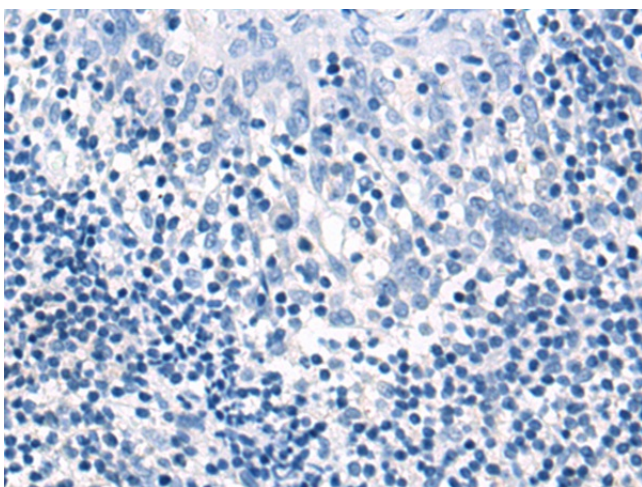
Product images:



Gel: 6%SDS-PAGE
Lysate: 40 μ g
Lane: HeLa cell lysate
Primary antibody: TA371041 (SHCBP1 Antibody) at dilution 1/600
Secondary antibody: Goat anti rabbit IgG at 1/5000 dilution
Exposure time: 15 seconds



Immunohistochemistry of paraffin-embedded Human tonsil tissue using TA371041 (SHCBP1 Antibody) at dilution 1/85 (Original magnification: \times 200)



Immunohistochemistry of paraffin-embedded Human tonsil tissue using TA371041 (SHCBP1 Antibody) at dilution 1/85, treated with fusion protein. (Original magnification: x200)