

## Product datasheet for **TA371036**

### LRWD1 Rabbit Polyclonal Antibody

#### Product data:

Product Type:	Primary Antibodies
Applications:	IHC, WB
Recommended Dilution:	WB: 500-2000 WB positive control: PC-3 cell lysate IHC: 100-300 Positive control: Human tonsil Predicted cell location: Nucleus
Reactivity:	Human
Host:	Rabbit
Isotype:	IgG
Clonality:	Polyclonal
Immunogen:	Fusion protein of human LRWD1
Formulation:	pH7.4 PBS, 0.05% NaN <sub>3</sub> , 40% Glycerol
Concentration:	lot specific
Purification:	Antigen affinity purification
Conjugation:	Unconjugated
Storage:	Store at -20°C.
Stability:	1 year
Predicted Protein Size:	71 kDa
Gene Name:	leucine-rich repeats and WD repeat domain containing 1
Database Link:	<a href="#">Entrez Gene 222229 Human</a> <a href="#">Q9UFC0</a>



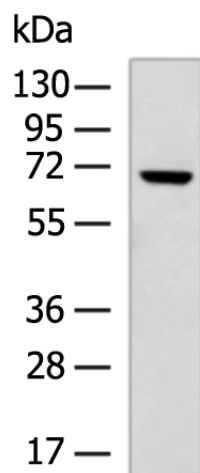
[View online »](#)

**Background:**

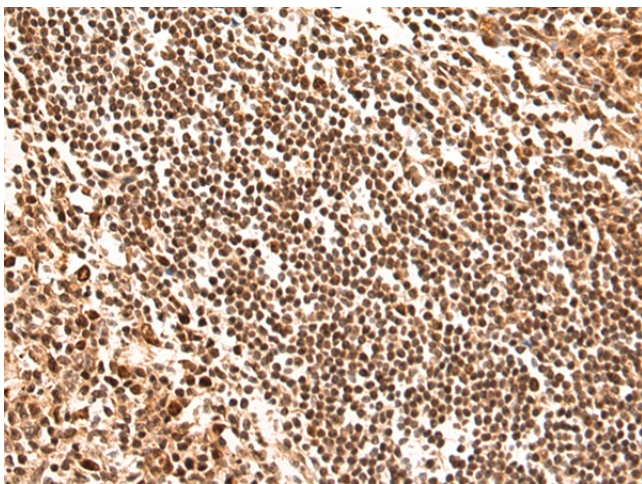
The protein encoded by this gene interacts with components of the origin recognition complex (ORC) and regulates the formation of the prereplicative complex. The encoded protein stabilizes the ORC and therefore aids in DNA replication. This protein is required for the G1/S phase transition of the cell cycle. In addition, the encoded protein binds to trimethylated histone H3 in heterochromatin and recruits the ORC and lysine methyltransferases, which help maintain the repressive heterochromatic state. Two transcript variants encoding different isoforms have been found for this gene.

**Synonyms:**

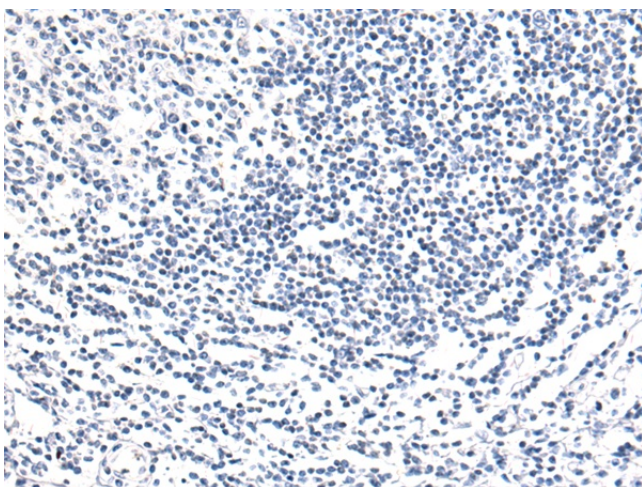
DKFZp434K1815

**Product images:**


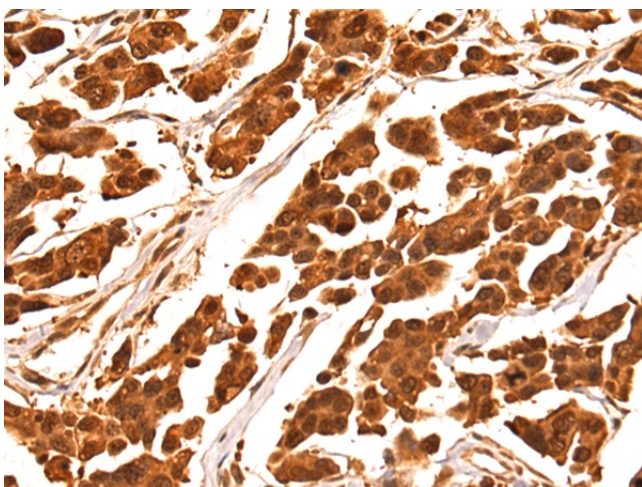
Gel: 8%SDS-PAGE  
Lysate: 40 µg  
Lane: PC-3 cell lysate  
Primary antibody: TA371036 (LRWD1 Antibody) at dilution 1/300  
Secondary antibody: Goat anti rabbit IgG at 1/5000 dilution  
Exposure time: 3 minutes



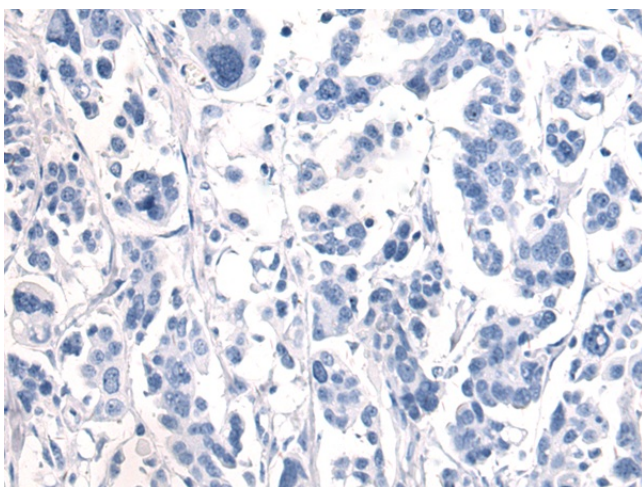
Immunohistochemistry of paraffin-embedded Human tonsil tissue using TA371036 (LRWD1 Antibody) at dilution 1/80 (Original magnification: ×200)



Immunohistochemistry of paraffin-embedded Human tonsil tissue using TA371036 (LRWD1 Antibody) at dilution 1/80, treated with fusion protein. (Original magnification: ×200)



Immunohistochemistry of paraffin-embedded Human colorectal cancer tissue using TA371036 (LRWD1 Antibody) at dilution 1/80 (Original magnification: ×200)



Immunohistochemistry of paraffin-embedded Human colorectal cancer tissue using TA371036 (LRWD1 Antibody) at dilution 1/80, treated with fusion protein. (Original magnification: ×200)