

Product datasheet for **TA371032S**

ORC2 Rabbit Polyclonal Antibody

Product data:

Product Type:	Primary Antibodies
Applications:	IHC, WB
Recommended Dilution:	WB: 500-2000 WB positive control: Raji, Jurkat, 293T cell lysates IHC: 50-100 Positive control: Human liver cancer Predicted cell location: Nucleus
Reactivity:	Human, Mouse, Rat
Host:	Rabbit
Isotype:	IgG
Clonality:	Polyclonal
Immunogen:	Fusion protein of human ORC2
Formulation:	pH7.4 PBS, 0.05% NaN ₃ , 40% Glycerol
Purification:	Antigen affinity purification
Conjugation:	Unconjugated
Storage:	Store at -20°C.
Stability:	1 year
Predicted Protein Size:	66 kDa
Gene Name:	origin recognition complex subunit 2
Database Link:	Entrez Gene 4999 Human Q13416



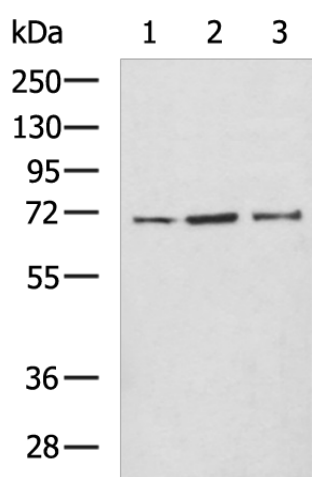
[View online »](#)

Background:

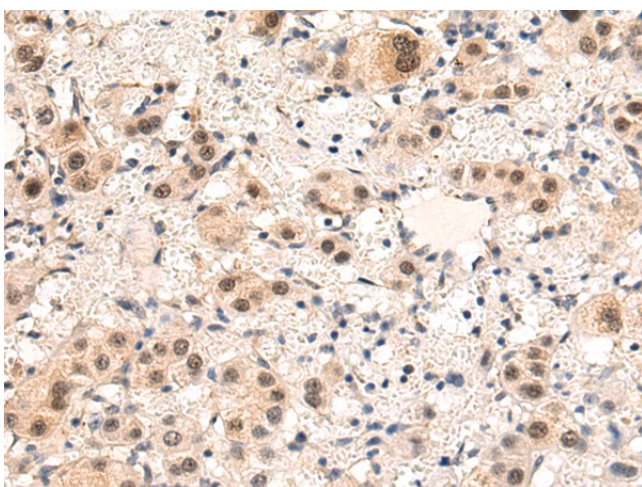
The origin recognition complex (ORC) is a highly conserved six subunits protein complex essential for the initiation of the DNA replication in eukaryotic cells. Studies in yeast demonstrated that ORC binds specifically to origins of replication and serves as a platform for the assembly of additional initiation factors such as Cdc6 and Mcm proteins. The protein encoded by this gene is a subunit of the ORC complex. This protein forms a core complex with ORC3, -4, and -5. It also interacts with CDC45 and MCM10, which are proteins known to be important for the initiation of DNA replication. This protein has been demonstrated to specifically associate with the origin of replication of Epstein-Barr virus in human cells, and is thought to be required for DNA replication from viral origin of replication. Alternatively spliced transcript variants have been found, one of which is a nonsense-mediated mRNA decay candidate.

Synonyms:

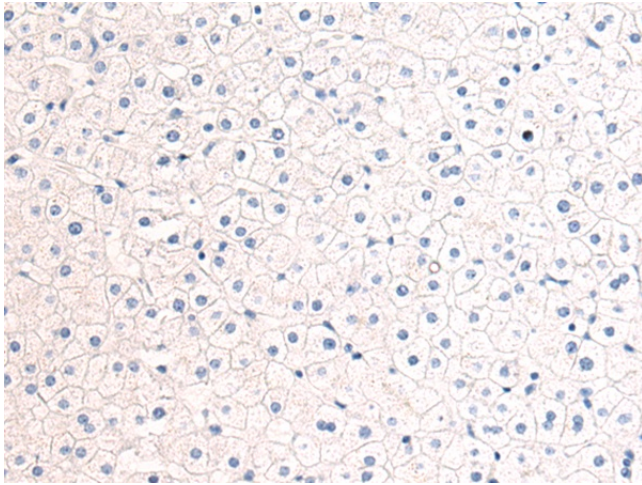
AU041563; Orc2l

Product images:


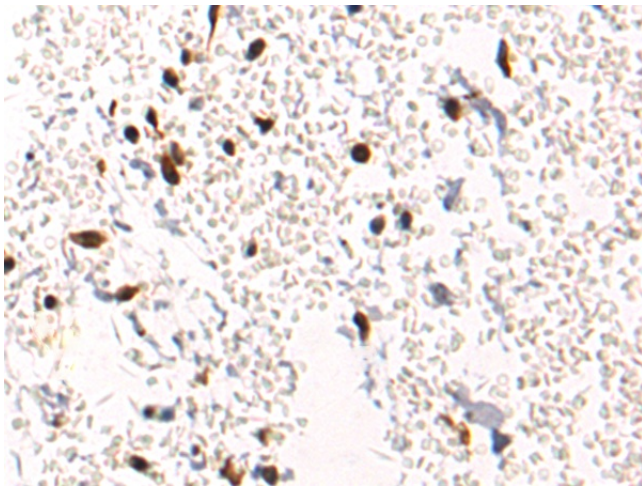
Gel: 8%SDS-PAGE
 Lysate: 40 µg
 Lane 1-3: Raji
 Jurkat
 293T cell lysates
 Primary antibody: [TA371032] (ORC2 Antibody) at dilution 1/600
 Secondary antibody: Goat anti rabbit IgG at 1/5000 dilution
 Exposure time: 2 minutes



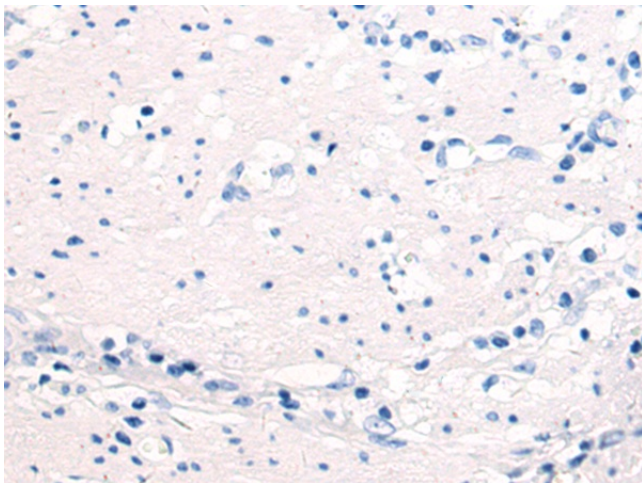
Immunohistochemistry of paraffin-embedded Human liver cancer tissue using [TA371032] (ORC2 Antibody) at dilution 1/80 (Original magnification: ×200)



Immunohistochemistry of paraffin-embedded Human liver cancer tissue using [TA371032] (ORC2 Antibody) at dilution 1/80, treated with fusion protein. (Original magnification: ×200)



Immunohistochemistry of paraffin-embedded Human esophagus cancer tissue using [TA371032] (ORC2 Antibody) at dilution 1/80 (Original magnification: ×200)



Immunohistochemistry of paraffin-embedded Human esophagus cancer tissue using [TA371032] (ORC2 Antibody) at dilution 1/80, treated with fusion protein. (Original magnification: ×200)