

Product datasheet for **TA371029**

PGM1 Rabbit Polyclonal Antibody

Product data:

Product Type:	Primary Antibodies
Applications:	IHC, WB
Recommended Dilution:	WB: 500-2000 WB positive control: Mouse skeletal muscle tissue, Mouse liver tissue lysates IHC: 100-300 Positive control: Human gastric cancer Predicted cell location: Cytoplasm
Reactivity:	Human, Mouse, Rat
Host:	Rabbit
Isotype:	IgG
Clonality:	Polyclonal
Immunogen:	Fusion protein of human PGM1
Formulation:	pH7.4 PBS, 0.05% NaN ₃ , 40% Glycerol
Concentration:	lot specific
Purification:	Antigen affinity purification
Conjugation:	Unconjugated
Storage:	Store at -20°C.
Stability:	1 year
Predicted Protein Size:	61 kDa
Gene Name:	phosphoglucomutase 1
Database Link:	Entrez Gene 5236 Human P36871



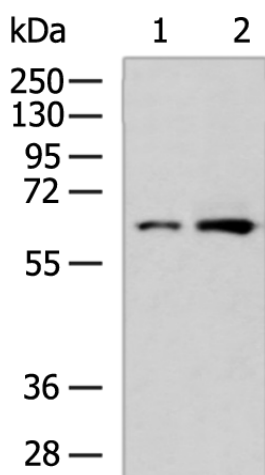
[View online »](#)

Background:

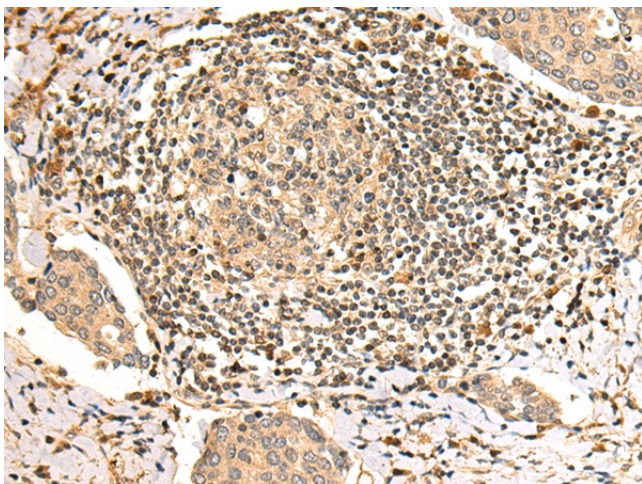
The protein encoded by this gene is an isozyme of phosphoglucosmutase (PGM) and belongs to the phosphohexose mutase family. There are several PGM isozymes, which are encoded by different genes and catalyze the transfer of phosphate between the 1 and 6 positions of glucose. In most cell types, this PGM isozyme is predominant, representing about 90% of total PGM activity. In red cells, PGM2 is a major isozyme. This gene is highly polymorphic. Mutations in this gene cause glycogen storage disease type 14. Alternativley spliced transcript variants encoding different isoforms have been identified in this gene.

Synonyms:

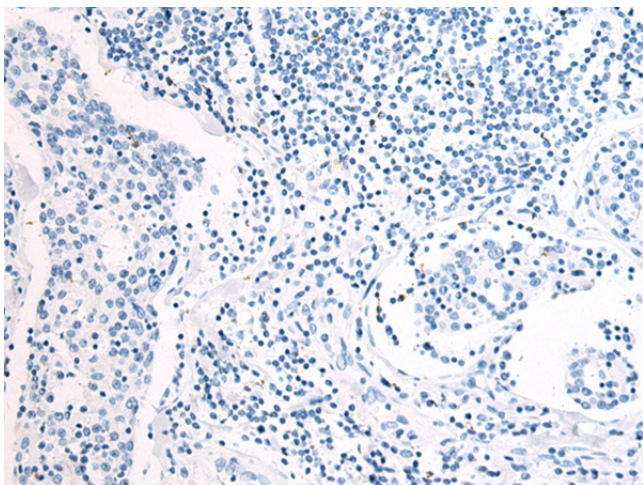
GSD14

Product images:

Gel: 8%SDS-PAGE
Lysate: 40 µg
Lane 1-2: Mouse skeletal muscle tissue
Mouse liver tissue lysates
Primary antibody: TA371029 (PGM1 Antibody) at dilution 1/300
Secondary antibody: Goat anti rabbit IgG at 1/5000 dilution
Exposure time: 5 seconds



Immunohistochemistry of paraffin-embedded Human gastric cancer tissue using TA371029 (PGM1 Antibody) at dilution 1/100 (Original magnification: ×200)



Immunohistochemistry of paraffin-embedded Human gastric cancer tissue using TA371029 (PGM1 Antibody) at dilution 1/100, treated with fusion protein. (Original magnification: ×200)