

## Product datasheet for **TA371028S**

### **BAT5 (ABHD16A) Rabbit Polyclonal Antibody**

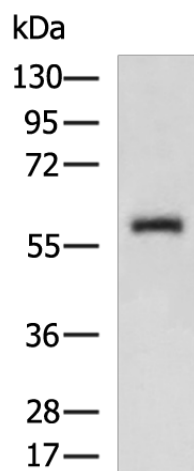
#### **Product data:**

Product Type:	Primary Antibodies
Applications:	WB
Recommended Dilution:	WB: 500-2000 WB positive control: Human stomach tissue lysate
Reactivity:	Human, Mouse, Rat
Host:	Rabbit
Isotype:	IgG
Clonality:	Polyclonal
Immunogen:	Fusion protein of human ABHD16A
Formulation:	pH7.4 PBS, 0.05% NaN <sub>3</sub> , 40% Glycerol
Purification:	Antigen affinity purification
Conjugation:	Unconjugated
Storage:	Store at -20°C.
Stability:	1 year
Predicted Protein Size:	63 kDa
Gene Name:	abhydrolase domain containing 16A
Database Link:	<a href="#">Entrez Gene 7920 Human O95870</a>
Background:	A cluster of genes, BAT1-BAT5, has been localized in the vicinity of the genes for tumor necrosis factor alpha and tumor necrosis factor beta. These genes are all within the human major histocompatibility complex class III region. The protein encoded by this gene is thought to be involved in some aspects of immunity. Alternatively spliced transcript variants have been described.
Synonyms:	AI326074; Bat-5; Bat5; D17H6S82E; NG26



[View online »](#)

## Product images:



Gel: 8%SDS-PAGE  
Lysate: 40  $\mu$ g  
Lane: Human stomach tissue lysate  
Primary antibody: [TA371028] (ABHD16A Antibody) at dilution 1/600  
Secondary antibody: Goat anti rabbit IgG at 1/5000 dilution  
Exposure time: 90 seconds