

Product datasheet for **TA371024S**

PTCD3 Rabbit Polyclonal Antibody

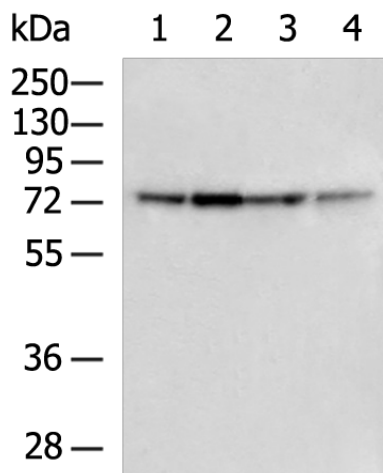
Product data:

Product Type:	Primary Antibodies
Applications:	IHC, WB
Recommended Dilution:	WB: 500-2000 WB positive control: HepG2 cell, BGC-823 Cell, LOVO cell, A172 cell lysates IHC: 100-200 Positive control: Human liver cancer Predicted cell location: Cytoplasm
Reactivity:	Human
Host:	Rabbit
Isotype:	IgG
Clonality:	Polyclonal
Immunogen:	Fusion protein of human PTCD3
Formulation:	pH7.4 PBS, 0.05% NaN ₃ , 40% Glycerol
Purification:	Antigen affinity purification
Conjugation:	Unconjugated
Storage:	Store at -20°C.
Stability:	1 year
Predicted Protein Size:	79 kDa
Gene Name:	pentatricopeptide repeat domain 3
Database Link:	Entrez Gene 55037 Human Q96EY7
Background:	Mitochondrial RNA-binding protein that has a role in mitochondrial translation.
Synonyms:	DKFZp666K071; FLJ20758; TRG-15

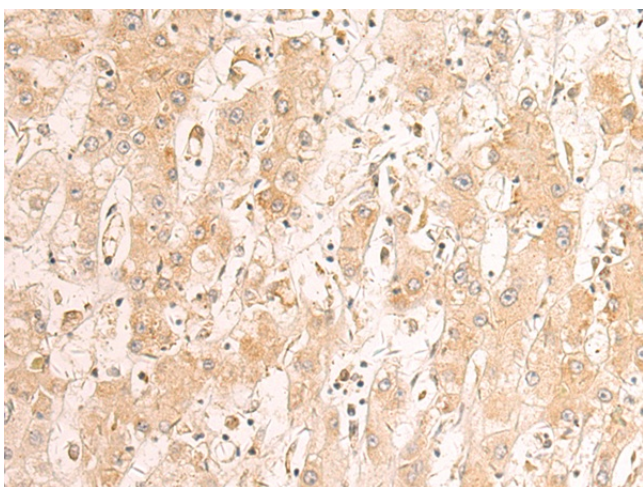


[View online »](#)

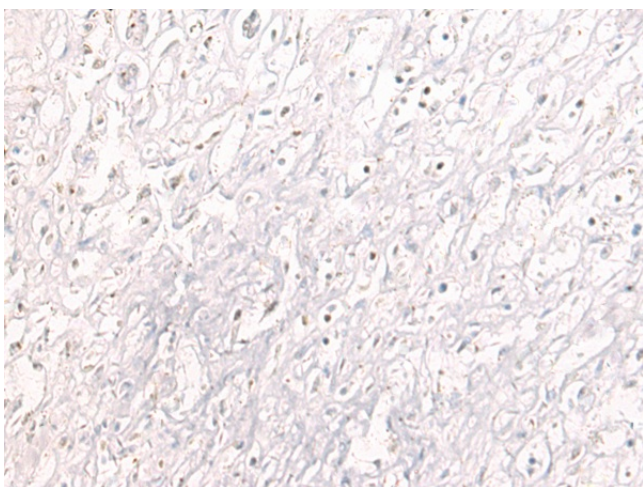
Product images:



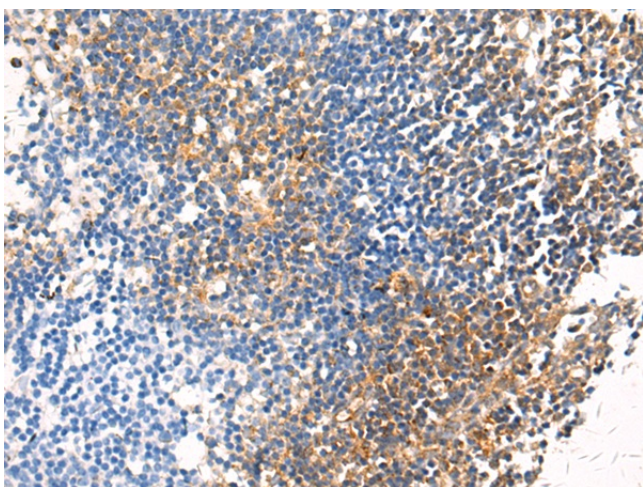
Gel: 8%SDS-PAGE
Lysate: 40 μ g
Lane 1-4: HepG2 cell
BGC-823 Cell
LOVO cell
A172 cell lysates
Primary antibody: [TA371024] (PTCD3 Antibody)
at dilution 1/800
Secondary antibody: Goat anti rabbit IgG at
1/5000 dilution
Exposure time: 15 seconds



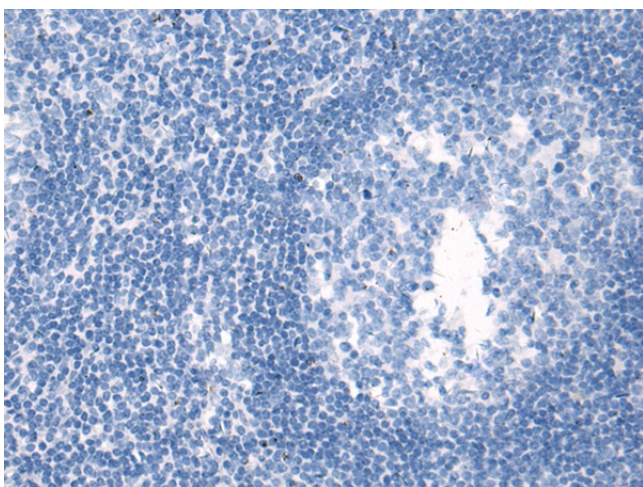
Immunohistochemistry of paraffin-embedded
Human liver cancer tissue using [TA371024]
(PTCD3 Antibody) at dilution 1/100 (Original
magnification: \times 200)



Immunohistochemistry of paraffin-embedded Human liver cancer tissue using [TA371024] (PTCD3 Antibody) at dilution 1/100, treated with fusion protein. (Original magnification: $\times 200$)



Immunohistochemistry of paraffin-embedded Human tonsil tissue using [TA371024] (PTCD3 Antibody) at dilution 1/100 (Original magnification: $\times 200$)



Immunohistochemistry of paraffin-embedded Human tonsil tissue using [TA371024] (PTCD3 Antibody) at dilution 1/100, treated with fusion protein. (Original magnification: $\times 200$)