

## Product datasheet for **TA371017S**

### RPUSD2 Rabbit Polyclonal Antibody

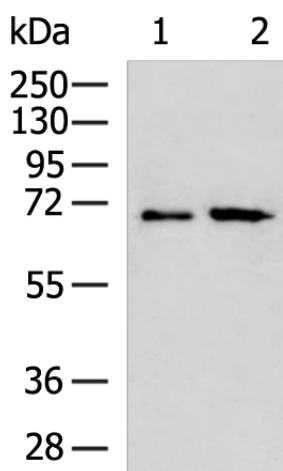
#### Product data:

Product Type:	Primary Antibodies
Applications:	IHC, WB
Recommended Dilution:	WB: 500-2000 WB positive control: A549 and Hela cell lysates IHC: 50-200 Positive control: Human tonsil Predicted cell location: Cytoplasm and Nucleus
Reactivity:	Human
Host:	Rabbit
Isotype:	IgG
Clonality:	Polyclonal
Immunogen:	Fusion protein of human RPUSD2
Formulation:	pH7.4 PBS, 0.05% NaN <sub>3</sub> , 40% Glycerol
Purification:	Antigen affinity purification
Conjugation:	Unconjugated
Storage:	Store at -20°C.
Stability:	1 year
Predicted Protein Size:	61 kDa
Gene Name:	RNA pseudouridylate synthase domain containing 2
Database Link:	<a href="#">Entrez Gene 27079 Human</a> <a href="#">Q8IZ73</a>
Background:	The function of this protein remains unknown.
Synonyms:	C15orf19; C18B11; FLJ31409

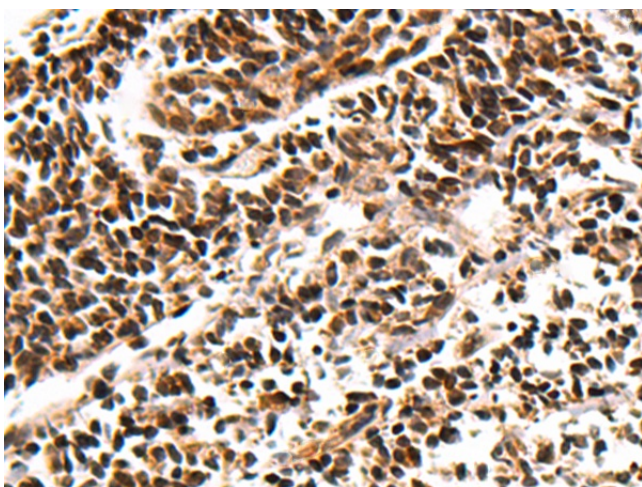


[View online »](#)

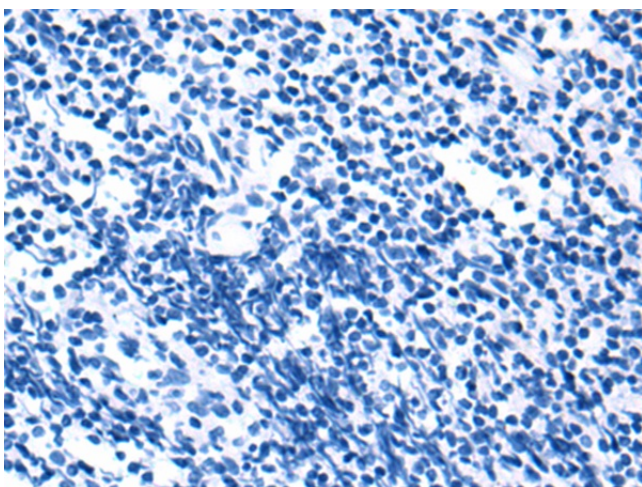
## Product images:



Gel: 8%SDS-PAGE  
 Lysate: 40 µg  
 Lane 1-2: A549 and HeLa cell lysates  
 Primary antibody: [TA371017] (RPUSD2 Antibody) at dilution 1/700  
 Secondary antibody: Goat anti rabbit IgG at 1/5000 dilution  
 Exposure time: 3 minutes



Immunohistochemistry of paraffin-embedded Human tonsil tissue using [TA371017] (RPUSD2 Antibody) at dilution 1/95 (Original magnification: ×200)



Immunohistochemistry of paraffin-embedded Human tonsil tissue using [TA371017] (RPUSD2 Antibody) at dilution 1/95, treated with fusion protein. (Original magnification: x200)