

## Product datasheet for **TA371015**

### CYP51A1 Rabbit Polyclonal Antibody

#### Product data:

Product Type:	Primary Antibodies
Applications:	IHC, WB
Recommended Dilution:	WB: 500-2000 WB positive control: Hela cell, Human testis tissue, HepG2 cell, Rat liver tissue lysates IHC: 50-200 Positive control: Human gastric cancer Predicted cell location: Cytoplasm
Reactivity:	Human, Mouse, Rat
Host:	Rabbit
Isotype:	IgG
Clonality:	Polyclonal
Immunogen:	Fusion protein of human CYP51A1
Formulation:	pH7.4 PBS, 0.05% NaN <sub>3</sub> , 40% Glycerol
Concentration:	lot specific
Purification:	Antigen affinity purification
Conjugation:	Unconjugated
Storage:	Store at -20°C.
Stability:	1 year
Predicted Protein Size:	57 kDa
Gene Name:	cytochrome P450 family 51 subfamily A member 1
Database Link:	<a href="#">Entrez Gene 1595 Human Q16850</a>



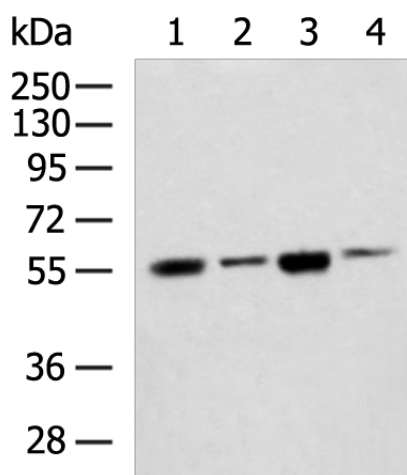
[View online »](#)

**Background:**

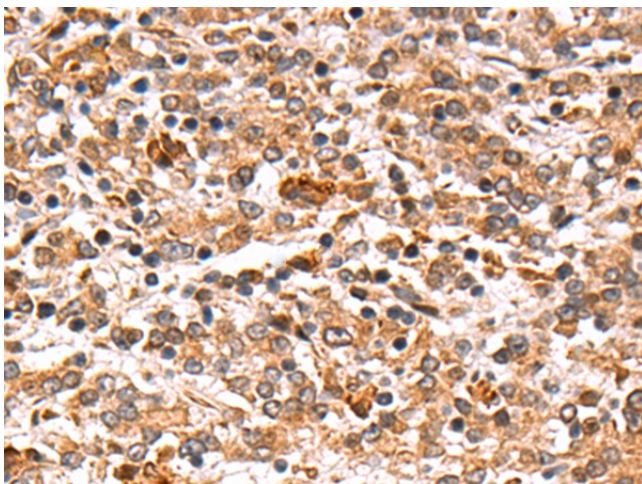
This gene encodes a member of the cytochrome P450 superfamily of enzymes. The cytochrome P450 proteins are monooxygenases which catalyze many reactions involved in drug metabolism and synthesis of cholesterol, steroids and other lipids. This endoplasmic reticulum protein participates in the synthesis of cholesterol by catalyzing the removal of the 14 $\alpha$ -methyl group from lanosterol. Homologous genes are found in all three eukaryotic phyla, fungi, plants, and animals, suggesting that this is one of the oldest cytochrome P450 genes. Two transcript variants encoding different isoforms have been found for this gene.

**Synonyms:**

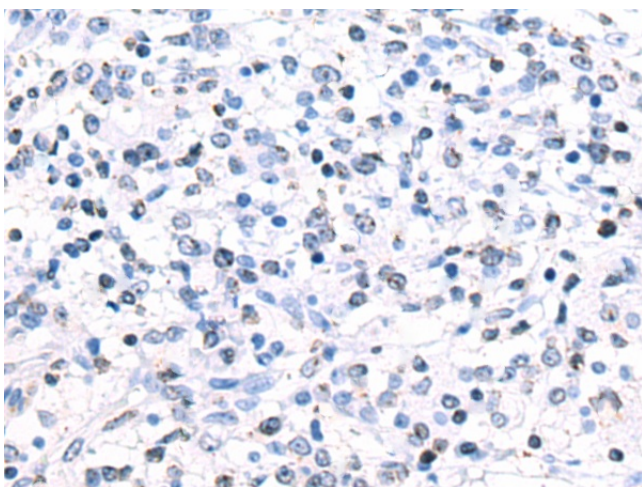
CP51; CYP51; CYPL1; CYPLI; LDM; P450-14DM; P450L1; P450LI; P45014DM

**Product images:**

Gel: 8%SDS-PAGE  
Lysate: 40  $\mu$ g  
Lane 1-4: HeLa cell  
Human testis tissue  
HepG2 cell  
Rat liver tissue lysates  
Primary antibody: TA371015 (CYP51A1 Antibody)  
at dilution 1/250  
Secondary antibody: Goat anti rabbit IgG at  
1/5000 dilution  
Exposure time: 10 minutes



Immunohistochemistry of paraffin-embedded  
Human gastric cancer tissue using TA371015  
(CYP51A1 Antibody) at dilution 1/70 (Original  
magnification:  $\times$ 200)



Immunohistochemistry of paraffin-embedded Human gastric cancer tissue using TA371015 (CYP51A1 Antibody) at dilution 1/70, treated with fusion protein. (Original magnification:  $\times 200$ )