

Product datasheet for **TA371010**

Myocilin (MYOC) Rabbit Polyclonal Antibody

Product data:

Product Type:	Primary Antibodies
Applications:	IHC, WB
Recommended Dilution:	WB: 500-2000 WB positive control: Hela cell lysate IHC: 50-200 Positive control: Human prostate cancer Predicted cell location: Cytoplasm
Reactivity:	Human, Mouse, Rat
Host:	Rabbit
Isotype:	IgG
Clonality:	Polyclonal
Immunogen:	Fusion protein of human MYOC
Formulation:	pH7.4 PBS, 0.05% NaN ₃ , 40% Glycerol
Concentration:	lot specific
Purification:	Antigen affinity purification
Conjugation:	Unconjugated
Storage:	Store at -20°C.
Stability:	1 year
Predicted Protein Size:	57 kDa
Gene Name:	myocilin
Database Link:	Entrez Gene 4653 Human Q99972

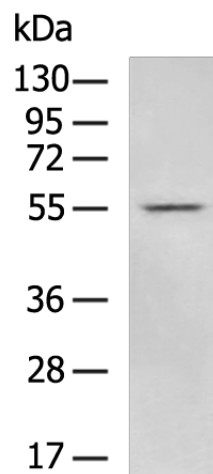
Background: MYOC encodes the protein myocilin, which is believed to have a role in cytoskeletal function. MYOC is expressed in many ocular tissues, including the trabecular meshwork, and was revealed to be the trabecular meshwork glucocorticoid-inducible response protein (TIGR). The trabecular meshwork is a specialized eye tissue essential in regulating intraocular pressure, and mutations in MYOC have been identified as the cause of hereditary juvenile-onset open-angle glaucoma.



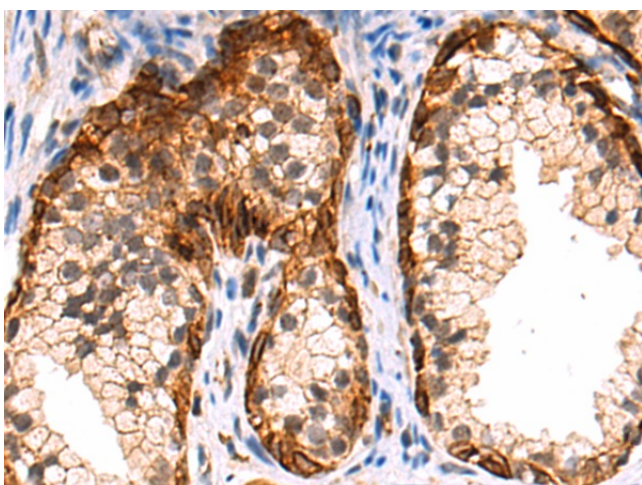
[View online »](#)

Synonyms: GLC1A; GPOA; JOAG; JOAG1; myocilin; TIGR

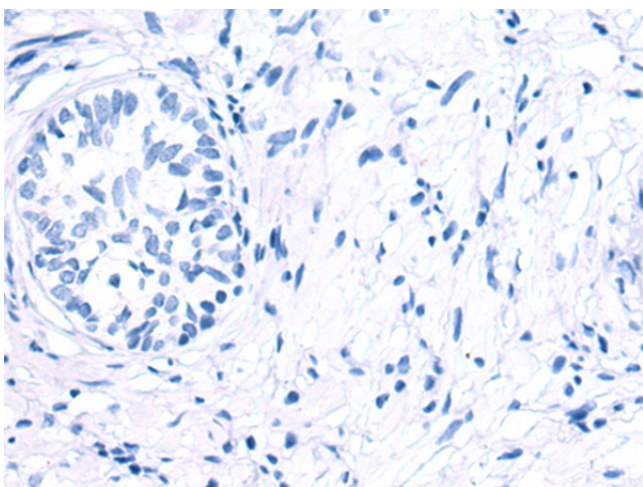
Product images:



Gel: 8%SDS-PAGE
Lysate: 40 μ g
Lane: HeLa cell lysate
Primary antibody: TA371010 (MYOC Antibody) at dilution 1/600
Secondary antibody: Goat anti rabbit IgG at 1/5000 dilution
Exposure time: 15 seconds



Immunohistochemistry of paraffin-embedded Human prostate cancer tissue using TA371010 (MYOC Antibody) at dilution 1/85 (Original magnification: \times 200)



Immunohistochemistry of paraffin-embedded Human prostate cancer tissue using TA371010 (MYOC Antibody) at dilution 1/85, treated with fusion protein. (Original magnification: ×200)